

# \$949,888 - 22142 Itasca, Chatsworth

MLS® #WS25250098

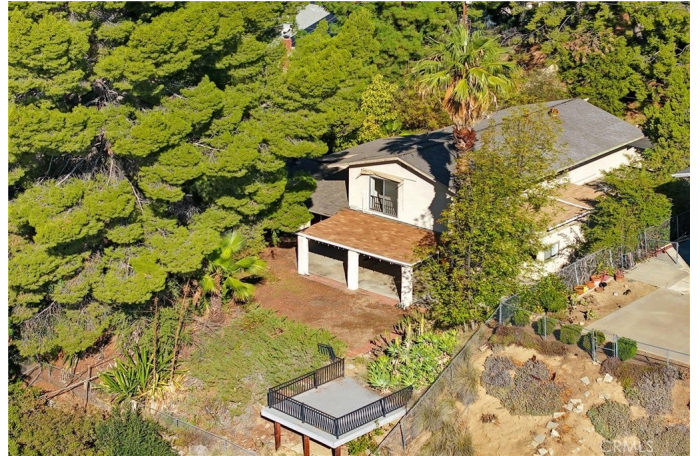
---

## \$949,888

4 Bedroom, 3.00 Bathroom, 2,359 sqft  
Residential on 0 Acres

N/A, Chatsworth,

Tucked away in a quiet, friendly Chatsworth Hills neighborhood west of Topanga, this inviting Mid-Century Modern home offers 2,400 sq ft of living space with 4 bedrooms and 2.5 baths, set on an expansive 10,000 sq ft lot with two sheds for additional storage. Wake up to breathtaking sunrise views of the San Fernando Valley from your private deck and unwind in the evenings as the mountains glow in the distance. The surrounding trees create a peaceful, natural canopy, keeping the home cool, shaded, and tranquil year-round. Inside, youâ€™ll find a spacious family room with a cozy fireplace, flowing seamlessly into an oversized kitchen with a sunny breakfast nook and an open-concept living and dining area, perfect for gatherings and entertaining. The home also features direct access to a three-car garage and a convenient downstairs powder room. Upstairs are four comfortable bedrooms, each with a walk-in closet and plenty of storage. A fourth room makes an ideal nursery, guest room, or home office. Lovingly maintained by longtime owners, this home is ready for your personal touch and modern updates. Nearby amenities include top-rated schools, a 75-acre park, three shopping malls, and easy access to the 118 Freeway. Donâ€™t miss this rare opportunity to own a classic Chatsworth Hills home combining space, character, and panoramic views in one of the Valleyâ€™s most serene settings.



Built in 1967

## Essential Information

MLS® #	WS25250098
Price	\$949,888
Bedrooms	4
Bathrooms	3.00
Full Baths	2
Half Baths	1
Square Footage	2,359
Acres	0.23
Year Built	1967
Type	Residential
Sub-Type	Single Family Residence
Style	Mid-Century Modern
Status	Closed
Listing Agent	Kristi Dietz
Listing Office	MARSHALL REDDICK REAL ESTATE

## Community Information

Address	22142 Itasca
Area	CHT - Chatsworth
Subdivision	N/A
City	Chatsworth
County	Los Angeles
Zip Code	91311

## Amenities

Utilities	Electricity Connected, Natural Gas Connected, Sewer Connected
Parking Spaces	3
Parking	Driveway, Garage, Direct Access, Door-Multi, Garage Faces Front
# of Garages	3
Garages	Driveway, Garage, Direct Access, Door-Multi, Garage Faces Front
View	Mountain(s), Neighborhood, Valley
Pool	None

## Exterior

Exterior	Copper Plumbing, Stone, Stucco, Wood Siding
Lot Description	Sprinkler System, Yard, Back Yard, Front Yard, Trees

Roof	Composition
Construction	Copper Plumbing, Stone, Stucco, Wood Siding
Foundation	Slab

## Interior

Interior	Carpet, Laminate, Wood
Interior Features	Walk-In Closet(s), All Bedrooms Up, Ceiling Fan(s), Eat-in Kitchen, Primary Suite, Recessed Lighting
Appliances	Gas Range, Microwave, Refrigerator, Dishwasher, Gas Oven, Water Heater
Heating	Central
Cooling	Central Air
Fireplace	Yes
Fireplaces	Family Room
# of Stories	2
Stories	Two

## School Information

District	Los Angeles Unified
Elementary	Germain
Middle	Lawrence
High	Chatsworth

## Additional Information

Date Listed	October 30th, 2025
Days on Market	7
Short Sale	N
RE / Bank Owned	N

Based on information from California Regional Multiple Listing Service, Inc. as of January 26th, 2026 at 2:55pm PST. This information is for your personal, non-commercial use and may not be used for any purpose other than to identify prospective properties you may be interested in purchasing. Display of MLS data is usually deemed reliable but is NOT guaranteed accurate by the MLS. Buyers are responsible for verifying the accuracy of all information and should investigate the data themselves or retain appropriate professionals. Information from sources other than the Listing Agent may have been included in the MLS data. Unless otherwise specified in writing, Broker/Agent has not and will not verify any information obtained from other sources. The Broker/Agent providing the information contained herein may or may not have been the Listing and/or Selling Agent.