

\$89,900 - Longview Pav Vic Ave W, Pearblossom

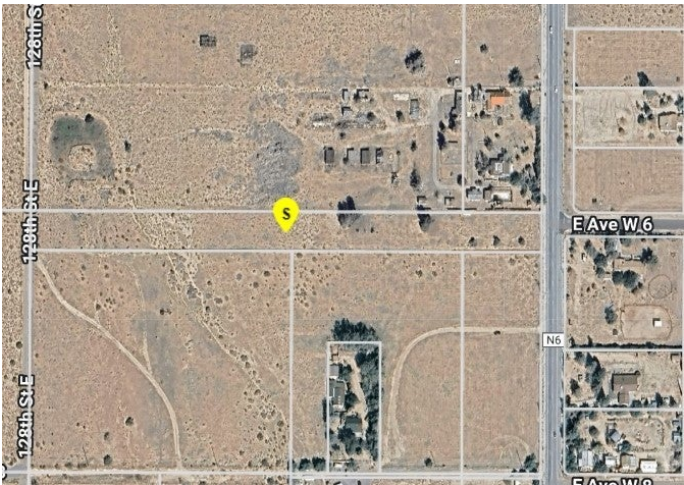
MLS® #SR25232125

\$89,900

0 Bedroom, 0.00 Bathroom,
Land on 3 Acres

N/A, Pearblossom,

Almost 3 acres in Pearblossom with residential and small agriculture zoning. Utilities are available on the street, offering an excellent opportunity to build a custom home, enjoy small-scale farming, or create your own retreat.



Essential Information

| | |
|----------------|------------------|
| MLS® # | SR25232125 |
| Price | \$89,900 |
| Bathrooms | 0.00 |
| Acres | 2.98 |
| Type | Land |
| Status | Closed |
| Listing Agent | Fredy Vanegas |
| Listing Office | ENRG Realty, Inc |

Community Information

| | |
|-------------|------------------------|
| Address | Longview Pav Vic Ave W |
| Area | PBLM - Pearblossom |
| Subdivision | N/A |
| City | Pearblossom |
| County | Los Angeles |
| Zip Code | 93553 |

Amenities

| | |
|------|--------|
| View | Desert |
|------|--------|

Exterior

Lot Description TwoToFiveUnitsAcre

Additional Information

Date Listed October 3rd, 2025
Days on Market 75
Zoning LCRA10000*
Short Sale N
RE / Bank Owned N

Based on information from California Regional Multiple Listing Service, Inc. as of February 7th, 2026 at 8:52pm PST. This information is for your personal, non-commercial use and may not be used for any purpose other than to identify prospective properties you may be interested in purchasing. Display of MLS data is usually deemed reliable but is NOT guaranteed accurate by the MLS. Buyers are responsible for verifying the accuracy of all information and should investigate the data themselves or retain appropriate professionals. Information from sources other than the Listing Agent may have been included in the MLS data. Unless otherwise specified in writing, Broker/Agent has not and will not verify any information obtained from other sources. The Broker/Agent providing the information contained herein may or may not have been the Listing and/or Selling Agent.