

# \$297,500 - 2554 Olive Drive # 38, Palmdale

MLS® #SR25124472

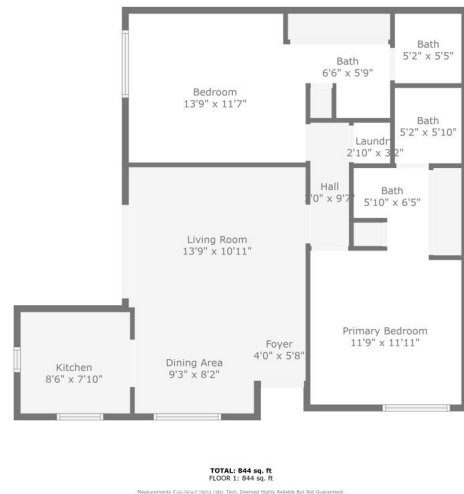
**\$297,500**

2 Bedroom, 2.00 Bathroom, 853 sqft

Residential on 2 Acres

N/A, Palmdale,

Discover comfort, convenience and security in this modern turn-key 2-bedroom, 2-bathroom condo nestled in the sought-after MONTE VISTA community in Palmdale. Built in 1986 and offering 853 sq ft of well-designed living space, this unit is perfect for first time buyers & downsizers. Enjoy a private balcony with street views, ideal for your morning coffee or evening unwinding. The open layout creates a light and airy atmosphere and the in-unit laundry adds everyday convenience. The light-filled living room & dining flows out to an enclosed balcony area. Prep your meals in this contemporary kitchen featuring granite counter tops, wood cabinetry & built-in appliance. This unit features two spacious primary en-suites, each with its own private bathroom and wall-to-wall closet storage - ideal for privacy, flexibility or roommates. Monte Vista residents enjoy resort-like amenities, including two sparkling pools, relaxing spas plus 24-hour security for peace of mind. With a central location close to shopping, dining, transportation and easy freeway access, everything you need is just minutes away. This unit is move-in ready and waiting for you - WELCOME HOME!



Built in 1986

## Essential Information

MLS® # SR25124472

Price \$297,500

Bedrooms	2
Bathrooms	2.00
Full Baths	2
Square Footage	853
Acres	1.66
Year Built	1986
Type	Residential
Sub-Type	Condominium
Style	Traditional
Status	Closed
Listing Agent	Raquel Magro
Listing Office	Pinnacle Estate Properties, Inc.

### Community Information

Address	2554 Olive Drive # 38
Area	PLM - Palmdale
Subdivision	N/A
City	Palmdale
County	Los Angeles
Zip Code	93550

### Amenities

Amenities	Pool, Maintenance Grounds, Pet Restrictions, Pets Allowed, Spa/Hot Tub
Parking Spaces	1
Parking	Carport, Detached Carport
Garages	Carport, Detached Carport
View	Neighborhood
Has Pool	Yes
Pool	Community, In Ground, Association
Security	Carbon Monoxide Detector(s), Smoke Detector(s), Gated Community, Key Card Entry

### Exterior

Exterior	Stucco
Lot Description	Near Public Transit
Construction	Stucco
Foundation	Slab

### Interior

Interior	Laminate, Tile
Interior Features	Ceiling Fan(s), Granite Counters, Multiple Primary Suites, Recessed Lighting
Appliances	Dishwasher, Microwave, Disposal, Free-Standing Range
Heating	Central
Cooling	Central Air
Fireplaces	None
# of Stories	1
Stories	One

### **School Information**

District	Palmdale
----------	----------

### **Additional Information**

Date Listed	June 9th, 2025
Days on Market	67
Zoning	PDRPD15U*
Short Sale	N
RE / Bank Owned	N

Based on information from California Regional Multiple Listing Service, Inc. as of January 26th, 2026 at 7:45am PST. This information is for your personal, non-commercial use and may not be used for any purpose other than to identify prospective properties you may be interested in purchasing. Display of MLS data is usually deemed reliable but is NOT guaranteed accurate by the MLS. Buyers are responsible for verifying the accuracy of all information and should investigate the data themselves or retain appropriate professionals. Information from sources other than the Listing Agent may have been included in the MLS data. Unless otherwise specified in writing, Broker/Agent has not and will not verify any information obtained from other sources. The Broker/Agent providing the information contained herein may or may not have been the Listing and/or Selling Agent.