

\$590,000 - 6121 Shoup Avenue # 34, Woodland Hills

MLS® #SR24242311

\$590,000

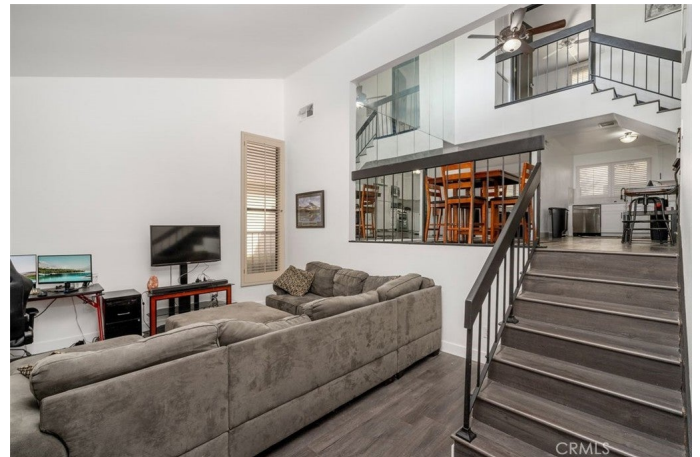
2 Bedroom, 2.00 Bathroom, 1,243 sqft
Residential on 3 Acres

N/A, Woodland Hills,

What an incredible property!. This inside end unit has a prime location with enhanced privacy featuring approximately 1,243 sq. ft. with a thoughtful multi-level layout. You enter through the very private brick patio with a water fountain and surrounded by lush landscaping and fruit trees. The first floor consists of a living room with a fireplace and cathedral ceiling. On the second floor is the second bedroom, full bathroom with a new shower stall and custom shower doors, kitchen with quartz counter tops, and the dining area. The large master suite is on the upper level with a sitting area, ample closet space with full wall mirrored closet doors, master bath with new custom shower stall, and double sinks. Features include plantation shutters, new wood laminate flooring throughout, freshly painted, and new electric service. There is also an attached garage with the laundry area and additional storage area. This townhome is not only move-in ready but also perfect for anyone seeking comfort, style and a great location. The Dove Creek Condominium Complex offers an ideal blend of amenities, convenience, and privacy. The amenities include two tennis courts, a heated pool and spa, earthquake insurance and well maintained grounds. This is an ideal place to call home!

Built in 1975

Essential Information



MLS® #	SR24242311
Price	\$590,000
Bedrooms	2
Bathrooms	2.00
Full Baths	2
Square Footage	1,243
Acres	2.89
Year Built	1975
Type	Residential
Sub-Type	Townhouse
Style	Contemporary
Status	Closed
Listing Agent	Stephanie Dimakides
Listing Office	Coldwell Banker Realty

Community Information

Address	6121 Shoup Avenue # 34
Area	WHLL - Woodland Hills
Subdivision	N/A
City	Woodland Hills
County	Los Angeles
Zip Code	91367

Amenities

Amenities	Insurance, Maintenance Grounds, Management, Pool, Spa/Hot Tub, Tennis Court(s), Trash
Utilities	Cable Connected, Electricity Connected, Natural Gas Connected, Sewer Connected, Underground Utilities, Water Connected
Parking Spaces	2
Parking	Door-Single, Garage, Direct Access, Garage Door Opener, Side By Side
# of Garages	2
Garages	Door-Single, Garage, Direct Access, Garage Door Opener, Side By Side
View	Neighborhood
Has Pool	Yes
Pool	In Ground, Association
Security	Carbon Monoxide Detector(s), Smoke Detector(s), Security Lights

Exterior

Exterior	Stucco
----------	--------

Exterior Features	Lighting
Lot Description	Level
Windows	Plantation Shutters, Screens
Construction	Stucco
Foundation	Slab

Interior

Interior	Laminate, Vinyl
Interior Features	Separate/Formal Dining Room, Open Floorplan, Primary Suite, Cathedral Ceiling(s), Ceiling Fan(s), Quartz Counters
Appliances	Dishwasher, Disposal, Gas Range, Microwave, Dryer, Refrigerator, Washer, Water Heater
Heating	Central
Cooling	Central Air
Fireplace	Yes
Fireplaces	Living Room, Gas Starter
# of Stories	3
Stories	Three Or More

School Information

District	Los Angeles Unified
----------	---------------------

Additional Information

Date Listed	December 5th, 2024
Days on Market	112
Zoning	LARD2
Short Sale	N
RE / Bank Owned	N

Based on information from California Regional Multiple Listing Service, Inc. as of February 15th, 2026 at 10:56am PST. This information is for your personal, non-commercial use and may not be used for any purpose other than to identify prospective properties you may be interested in purchasing. Display of MLS data is usually deemed reliable but is NOT guaranteed accurate by the MLS. Buyers are responsible for verifying the accuracy of all information and should investigate the data themselves or retain appropriate professionals. Information from sources other than the Listing Agent may have been included in the MLS data. Unless otherwise specified in writing, Broker/Agent has not and will not verify any information obtained from other sources. The Broker/Agent providing the information contained herein may or may not have been the Listing and/or Selling Agent.