

\$574,000 - 1650 Balinese Court, Palmdale

MLS® #SR24237008

\$574,000

5 Bedroom, 3.00 Bathroom, 2,564 sqft
Residential on 0 Acres

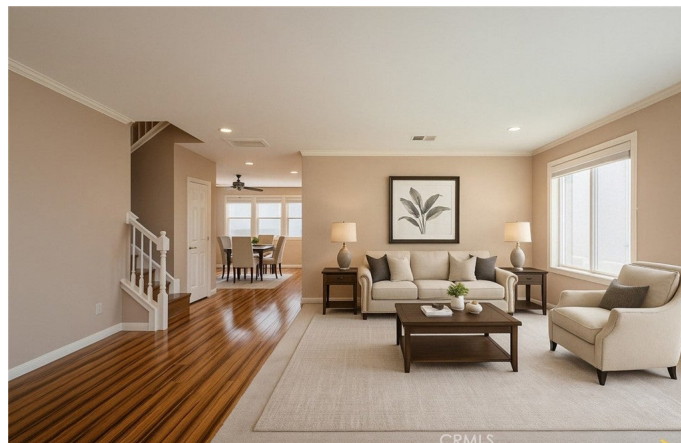
N/A, Palmdale,

Welcome to 1650 Balinese Ct, nestled in West Palmdale's ever-desired area. This stunning two-story residence offers 2,564 sq. ft. of living space and captivates with its striking curb appeal. Featuring a low-maintenance front yard, tasteful turf, and a stamped concrete backyard, it seamlessly combines beauty and practicality.

Inside, the home boasts a thoughtfully designed layout with three bedrooms, three baths, a dedicated office, and a formal living room. Upstairs, a spacious den provides an ideal space for relaxation or secondary entertainment. The primary suite impresses with its generous layout and a massive walk-in closet, offering both luxury and functionality.

The well-appointed garage includes ample storage, adding convenience to this exceptional property.

This beautiful home is calling your name, book your private tour today.



Built in 2009

Essential Information

MLS® #	SR24237008
Price	\$574,000
Bedrooms	5
Bathrooms	3.00
Full Baths	3

Square Footage	2,564
Acres	0.21
Year Built	2009
Type	Residential
Sub-Type	Single Family Residence
Style	Traditional
Status	Closed
Listing Agent	Jenny Segovia
Listing Office	Luxury Collective

Community Information

Address	1650 Balinese Court
Area	PLM - Palmdale
Subdivision	N/A
City	Palmdale
County	Los Angeles
Zip Code	93551

Amenities

Amenities	Other
Utilities	Electricity Available, Natural Gas Connected, Sewer Connected, Water Connected
Parking Spaces	2
Parking	Concrete, Direct Access, Garage
# of Garages	2
Garages	Concrete, Direct Access, Garage
View	None
Pool	None

Exterior

Lot Description	Front Yard
-----------------	------------

Interior

Interior Features	Ceiling Fan(s), Eat-in Kitchen, Pantry, Recessed Lighting, Stone Counters
Appliances	Dishwasher, Gas Range, Microwave, Range Hood, Water Heater
Heating	Central
Cooling	Central Air
Fireplaces	None
# of Stories	2

StoriesTwo

School Information

DistrictApple Valley Unified

Additional Information

Date ListedNovember 19th, 2024

Days on Market170

ZoningPDR17000*

Short SaleN

RE / Bank OwnedN

Based on information from California Regional Multiple Listing Service, Inc. as of February 10th, 2026 at 6:50am PST. This information is for your personal, non-commercial use and may not be used for any purpose other than to identify prospective properties you may be interested in purchasing. Display of MLS data is usually deemed reliable but is NOT guaranteed accurate by the MLS. Buyers are responsible for verifying the accuracy of all information and should investigate the data themselves or retain appropriate professionals. Information from sources other than the Listing Agent may have been included in the MLS data. Unless otherwise specified in writing, Broker/Agent has not and will not verify any information obtained from other sources. The Broker/Agent providing the information contained herein may or may not have been the Listing and/or Selling Agent.