

\$4,495,000 - 1501 Palm Drive, Hermosa Beach

MLS® #SB26015625

\$4,495,000

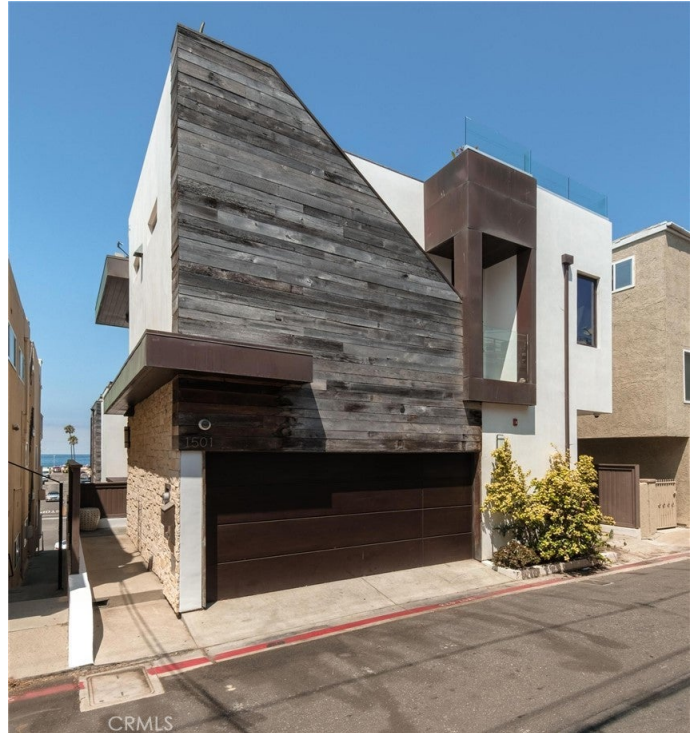
4 Bedroom, 5.00 Bathroom, 2,975 sqft
Residential on 0 Acres

N/A, Hermosa Beach,

Renowned Starr-designed home located just one block off the sand and slightly north of downtown Hermosa Beach's cafes, spas, stores, restaurants, gyms, and so much more. Beach living is the name of the game. With inspiring front lit waves greeting you in the morning and soothing sunsets bidding you goodnight, 1501 Palm Drive is ready to welcome you.

Consisting of approximately 2,975 square feet, with 4 bedrooms and 4.5 bathrooms, a convenient 3-stop elevator, and unblockable point-to-point ocean views from your sprawling approximately ~600 square foot rooftop deck, this home is perfect for entertaining. Blending smooth white stucco with rough split limestone, weathered reclaimed barn wood, rich mahogany windows and doors, and copper paneling, this home is oozing with luxury and refinement at every turn. The well-appointed kitchen and great room offer a center island, pantry, and top-of-the-line Thermador appliances. Summer kitchen upstairs on the huge deck with a big spa tub, dining table, elevated couch and oversized sun beds, all with dramatic, panoramic ocean views.

Live "the-dream-location" in a home spacious enough for a large family, where one can park their car on Friday and not need to pick up the keys again until Monday. With an impressive walk score of 90, this home's location is a true "walker's paradise" where daily errands do not require a car. Time is our greatest resource



and it is fleeting - this incredible home offers the perfect solution! Just bring your sunblock and get ready to soak up the laid-back beachside lifestyle.

Built in 2016

Essential Information

MLS® #	SB26015625
Price	\$4,495,000
Bedrooms	4
Bathrooms	5.00
Full Baths	4
Half Baths	1
Square Footage	2,975
Acres	0.09
Year Built	2016
Type	Residential
Sub-Type	Townhouse
Status	Closed
Listing Agent	Robb Stroyke
Listing Office	Bayside

Community Information

Address	1501 Palm Drive
Area	148 - Hermosa Bch Sand
Subdivision	N/A
City	Hermosa Beach
County	Los Angeles
Zip Code	90254

Amenities

Amenities	Other
Parking Spaces	2
Parking	Garage
# of Garages	2
Garages	Garage
View	Ocean, Panoramic, Water, Bay, Catalina, City Lights, Coastline
Pool	None

Exterior

Lot Description Street Level

Interior

Interior Wood

Interior Features Balcony, Separate/Formal Dining Room, Open Floorplan, Bedroom on Main Level, Primary Suite, Walk-In Closet(s), Elevator, Living Room Deck Attached, Pantry, Walk-In Pantry

Appliances Dishwasher, Refrigerator, Freezer, SixBurnerStove

Heating Central, Forced Air, Fireplace(s)

Cooling Central Air

Fireplace Yes

Fireplaces Living Room

of Stories 3

Stories Three Or More

School Information

District Manhattan Unified

Additional Information

Date Listed January 22nd, 2026

Days on Market 29

Zoning HBR3*

Short Sale N

RE / Bank Owned N

Based on information from California Regional Multiple Listing Service, Inc. as of April 12th, 2026 at 10:15am PDT. This information is for your personal, non-commercial use and may not be used for any purpose other than to identify prospective properties you may be interested in purchasing. Display of MLS data is usually deemed reliable but is NOT guaranteed accurate by the MLS. Buyers are responsible for verifying the accuracy of all information and should investigate the data themselves or retain appropriate professionals. Information from sources other than the Listing Agent may have been included in the MLS data. Unless otherwise specified in writing, Broker/Agent has not and will not verify any information obtained from other sources. The Broker/Agent providing the information contained herein may or may not have been the Listing and/or Selling Agent.