

\$5,500 - 24542 Polaris Drive, Dana Point

MLS® #SB24009029

\$5,500

3 Bedroom, 3.00 Bathroom, 2,252 sqft

Residential Lease on 0 Acres

Sea Ridge (SR), Dana Point,

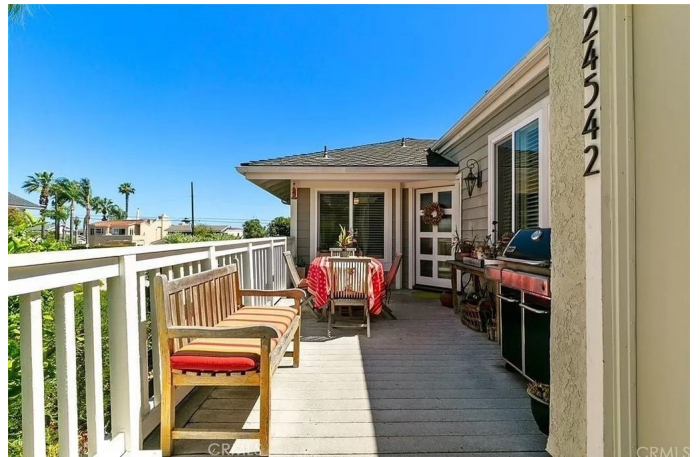
One of the largest and most rare floorplans in the beautiful community of Sea Ridge. With tall ceilings and a very open feel this home is an absolute gem. New hardwood flooring and paint. The home has a very relaxing Zen-like feel throughout and was re-piped with PEX piping. This home is a very rare model with three bedrooms, three baths, and nearly 2300 square feet of living space, it is a must see!

The primary bedroom is oversized with excellent natural light and his and hers closets.

The primary bath has a spa-like feel with natural light, a large tub and a private shower.

The two bedrooms downstairs have backyard patio access which includes a gorgeous, commissioned fountain sculpture made from granite taken from the Sierra Nevada range.

All three bedrooms are larger in size and have a ton of closet space. One of the bedrooms is on the main floor with vaulted ceilings. The attached two car garage is also very spacious with room for storage. Don't miss out on one of the best homes in this resort-like community with beautifully maintained and amazing amenities. These amenities include tennis courts, a relaxing pool with ocean views and a two-acre private park with outstanding ocean views as well. With a great location overlooking Lantern District and a short distance to Dana Point Harbor, beaches, shops, and restaurants this is beach living at its finest!



Built in 1983

Essential Information

| | |
|----------------|-------------------|
| MLS® # | SB24009029 |
| Price | \$5,500 |
| Bedrooms | 3 |
| Bathrooms | 3.00 |
| Full Baths | 3 |
| Square Footage | 2,252 |
| Acres | 0.05 |
| Year Built | 1983 |
| Type | Residential Lease |
| Sub-Type | Townhouse |
| Status | Closed |
| Listing Agent | Sam Musallam |
| Listing Office | Elite Realtors |

Community Information

| | |
|-------------|---------------------|
| Address | 24542 Polaris Drive |
| Area | DH - Dana Hills |
| Subdivision | Sea Ridge (SR) |
| City | Dana Point |
| County | Orange |
| Zip Code | 92629 |

Amenities

| | |
|----------------|-------------------------|
| Amenities | Pool, Tennis Court(s) |
| Utilities | Association Dues, Water |
| Parking Spaces | 2 |
| # of Garages | 2 |
| View | Ocean, Panoramic |
| Has Pool | Yes |
| Pool | Community, Association |

Interior

| | |
|-------------------|-----------------------|
| Interior Features | Bedroom on Main Level |
| Appliances | Dryer, Washer |
| Cooling | Central Air |
| Fireplace | Yes |
| Fireplaces | Living Room |
| # of Stories | 2 |

Stories Two

School Information

District Capistrano Unified

Additional Information

Date Listed January 15th, 2024

Days on Market 21

Short Sale N

RE / Bank Owned N

Based on information from California Regional Multiple Listing Service, Inc. as of May 19th, 2024 at 2:55am PDT. This information is for your personal, non-commercial use and may not be used for any purpose other than to identify prospective properties you may be interested in purchasing. Display of MLS data is usually deemed reliable but is NOT guaranteed accurate by the MLS. Buyers are responsible for verifying the accuracy of all information and should investigate the data themselves or retain appropriate professionals. Information from sources other than the Listing Agent may have been included in the MLS data. Unless otherwise specified in writing, Broker/Agent has not and will not verify any information obtained from other sources. The Broker/Agent providing the information contained herein may or may not have been the Listing and/or Selling Agent.