

\$895,000 - 3000 Persimmon Place, Fullerton

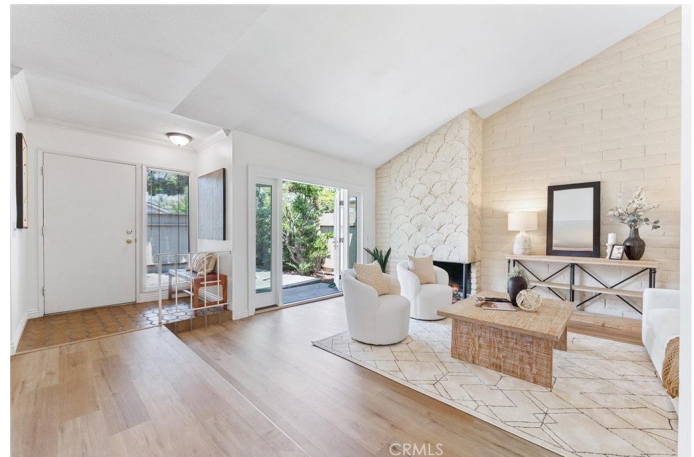
MLS® #PW25140496

\$895,000

3 Bedroom, 2.00 Bathroom, 1,617 sqft
Residential on 0 Acres

Orchard Lane, Fullerton,

Welcome to 3000 Persimmon Place! This beautifully maintained 3-bedroom, 2-bathroom single story home sits in the desirable Orchard Lane community of Fullerton. With 1,617 square feet of living space on a 3,600 square foot lot, this home offers comfort, style, and a prime location. Step into the home you are greeted by the bright living room with vaulted ceilings, a gas fireplace, and French doors that open to a private gated front courtyard. The dining room is spacious and overlooks the living room and has direct access to the kitchen. The kitchen overlooks the family room and has white cabinetry, stainless steel appliances, breakfast bar seating, and a large sink over the kitchen sink. The family room is off the kitchen and dining room with a large sliding glass door that opens to the side yard. The spacious primary suite features vaulted ceilings, two large closets, an attached en suite bathroom, and sliding glass doors to the backyard. The two secondary bedrooms are generously sized with large windows and sit at the rear of the home. The full hallway bathroom serves the two secondary bedrooms. Enjoy newer LVP flooring, neutral toned designed carpet in the bedrooms, newer interior paint, and updated light fixtures. Additional highlights include an attached oversized 2-car garage with direct access, a rare extended driveway that fits two additional cars, storage, and laundry hookups. Orchard Lane is a small HOA community with 28 homes and offers a beautiful pool and spa in



the center of the community. Zoned for some of the areas finest schools, you will have access to Rolling Hills Elementary School, Ladera Vista Junior High School and the highly coveted Fullerton Joint Union High School District. Ideally located near California State University of Fullerton, downtown Brea and Fullerton, Brea Mall, St. Jude Hospital, Coyote Hills Golf Course, Craig Park, and so much more! The 57, 91, 55, 22, and 60 freeways are all easily accessible, offering convenient connections throughout Orange County, Los Angeles, and the rest of Southern California. This home has been well-maintained and cared for and is ready to open its doors to its next owner!

Built in 1974

Essential Information

MLS® #	PW25140496
Price	\$895,000
Bedrooms	3
Bathrooms	2.00
Full Baths	2
Square Footage	1,617
Acres	0.08
Year Built	1974
Type	Residential
Sub-Type	Single Family Residence
Style	Ranch, Traditional
Status	Closed
Listing Agent	Jacob Abeelen
Listing Office	T.N.G. Real Estate Consultants

Community Information

Address	3000 Persimmon Place
Area	83 - Fullerton
Subdivision	Orchard Lane
City	Fullerton

County Orange
Zip Code 92835

Amenities

Amenities Maintenance Grounds, Pool, Spa/Hot Tub, Tennis Court(s), Trash, Maintenance Front Yard, Management, Pet Restrictions, Pets Allowed, Water
Utilities Sewer Connected, Electricity Connected, Natural Gas Connected, Water Connected
Parking Spaces 2
Parking Concrete, Direct Access, Driveway, Driveway Level, Garage, Garage Door Opener, Garage Faces Front, Off Street, Side By Side
of Garages 2
Garages Concrete, Direct Access, Driveway, Driveway Level, Garage, Garage Door Opener, Garage Faces Front, Off Street, Side By Side
View Neighborhood
Has Pool Yes
Pool Association, Community, In Ground
Security Smoke Detector(s), Carbon Monoxide Detector(s)

Exterior

Exterior Stucco, Wood Siding
Exterior Features Rain Gutters
Lot Description Back Yard, Corner Lot, Cul-De-Sac, Front Yard, Level, Street Level
Windows Blinds, Screens
Roof Composition, Shingle
Construction Stucco, Wood Siding
Foundation Slab

Interior

Interior Vinyl, Carpet, Tile
Interior Features Bedroom on Main Level, Breakfast Bar, Main Level Primary, Primary Suite, Separate/Formal Dining Room
Appliances Gas Range, Dishwasher, Disposal, Dryer, Free-Standing Range, Gas Oven, Gas Water Heater, Microwave, Refrigerator, Washer, Water Heater
Heating Central
Cooling Central Air
Fireplace Yes
Fireplaces Gas, Living Room, Wood Burning
of Stories 1

Stories One

School Information

District	Fullerton Joint Union High
Elementary	Rolling Hills
Middle	Ladera Ranch
High	Fullerton Union

Additional Information

Date Listed	July 16th, 2025
Days on Market	82
Short Sale	N
RE / Bank Owned	N

Based on information from California Regional Multiple Listing Service, Inc. as of April 7th, 2026 at 4:56pm PDT. This information is for your personal, non-commercial use and may not be used for any purpose other than to identify prospective properties you may be interested in purchasing. Display of MLS data is usually deemed reliable but is NOT guaranteed accurate by the MLS. Buyers are responsible for verifying the accuracy of all information and should investigate the data themselves or retain appropriate professionals. Information from sources other than the Listing Agent may have been included in the MLS data. Unless otherwise specified in writing, Broker/Agent has not and will not verify any information obtained from other sources. The Broker/Agent providing the information contained herein may or may not have been the Listing and/or Selling Agent.