

\$1,095,000 - 7068 Island Village Drive, Long Beach

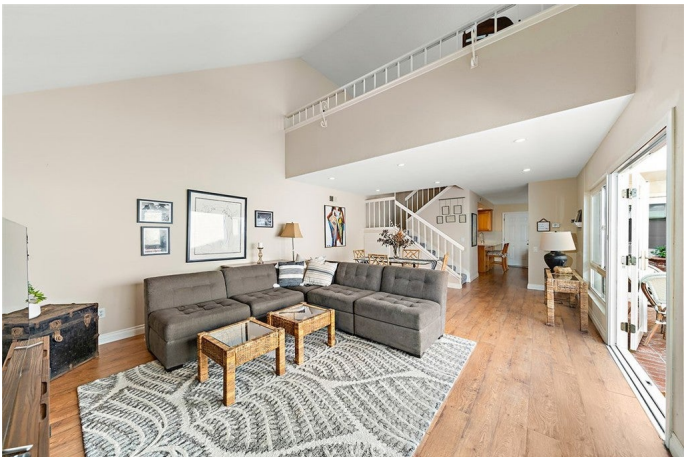
MLS® #PW25092291

\$1,095,000

3 Bedroom, 2.00 Bathroom, 1,729 sqft
Residential on 0 Acres

Island Village (ISV), Long Beach,

Welcome to Island Village – one of Long Beach’s hidden gems! This charming house has 3 bedrooms and 2 bathrooms, including a comfy primary suite. The layout is super functional, with a formal living room, a dining area, and a kitchen that opens up to a separate den – perfect for hanging out or entertaining. The living spaces wrap around a private patio, giving you a great indoor-outdoor vibe. Plus, you’ll love the peaceful backdrop – the home backs right up to the wetlands for extra privacy, a touch of nature and great views of the wetlands from the upstairs bedrooms. A 2-car garage adds plenty of convenience, and living here means you also get access to Island Village’s pool, parks, and clubhouse. It’s the perfect mix of laid-back living with everything you need just minutes away. A rare opportunity to live close to nature while still enjoying easy access to shops, dining, and major freeways. Come check it out – you’re going to love it!



Built in 1973

Essential Information

MLS® #	PW25092291
Price	\$1,095,000
Bedrooms	3
Bathrooms	2.00
Full Baths	2
Square Footage	1,729

Acres	0.05
Year Built	1973
Type	Residential
Sub-Type	Single Family Residence
Style	Traditional
Status	Closed
Listing Agent	Crystal Glenning
Listing Office	Compass

Community Information

Address	7068 Island Village Drive
Area	1 - Belmont Shore/Park,Naples,Marina Pac,Bay Hrbr
Subdivision	Island Village (ISV)
City	Long Beach
County	Los Angeles
Zip Code	90803

Amenities

Amenities	Maintenance Grounds, Trash, Clubhouse, Management, Pets Allowed, Picnic Area
Utilities	Electricity Connected, Natural Gas Connected, Sewer Connected, Water Connected
Parking Spaces	2
Parking	Garage Faces Rear
# of Garages	2
Garages	Garage Faces Rear
Has Pool	Yes
Pool	Community
Security	Gated Community

Exterior

Exterior	Stucco
Lot Description	Yard
Windows	Plantation Shutters
Construction	Stucco
Foundation	Slab

Interior

Interior	Vinyl
----------	-------

Interior Features	High Ceilings, Open Floorplan, Eat-in Kitchen, Main Level Primary, Separate/Formal Dining Room
Appliances	Gas Cooktop, Refrigerator, Water Heater
Heating	Central
Cooling	None
Fireplaces	None
# of Stories	2
Stories	Two

School Information

District	Long Beach Unified
High	Woodrow Wilson

Additional Information

Date Listed	March 15th, 2025
Days on Market	14
Zoning	LBPD1
Short Sale	N
RE / Bank Owned	N

Based on information from California Regional Multiple Listing Service, Inc. as of February 3rd, 2026 at 4:15pm PST. This information is for your personal, non-commercial use and may not be used for any purpose other than to identify prospective properties you may be interested in purchasing. Display of MLS data is usually deemed reliable but is NOT guaranteed accurate by the MLS. Buyers are responsible for verifying the accuracy of all information and should investigate the data themselves or retain appropriate professionals. Information from sources other than the Listing Agent may have been included in the MLS data. Unless otherwise specified in writing, Broker/Agent has not and will not verify any information obtained from other sources. The Broker/Agent providing the information contained herein may or may not have been the Listing and/or Selling Agent.