

\$868,000 - 923 Sand Spoling Avenue, Whittier

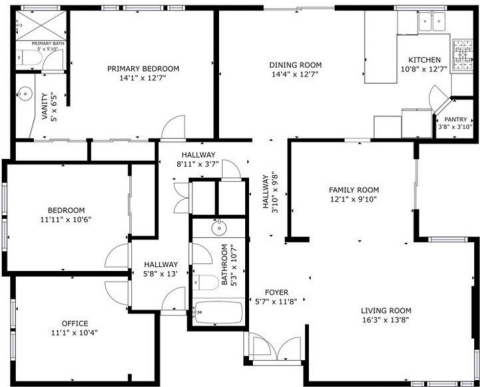
MLS® #PW25055129

\$868,000

3 Bedroom, 2.00 Bathroom, 1,603 sqft
Residential on 0 Acres

N/A, Whittier,

***SHOW YOUR FUSSIEST BUYER THAT DEMANDS COPPER PLUMBING, DBL PANED WINDOWS, REMODELED KITCHEN W/GRANITE COUNTERS, CUSTOM CABINETS, ELECTRIC DOUBLE OVENS, 5 BURNER GAS RANGE TOP, DECORATIVE CASA BLANCA CEILING FANS THROUGHOUT, CENTRAL AIR & HEAT, 40 YR. ROOF, FULLY PAID IN FULL SOLAR, ILLUMINATED 10' x 25' COVERED PATIO, GAS CONNECTION FOR BBQ, 3 CAR ATTACHED GARAGE, AS WELL AS BLOCK WALL FENCING & RECENTLY PAINTED INTERIOR. MUST SEE TO APPRECIATE! LOCATED ON A QUIET CUL-DE-SAC AND CONVENIENT TO RIO HONDO & WHITTIER COLLEGES AS WELL AS 605 & 60 FREEWAYS!



Matterport

Built in 1977

Essential Information

MLS® #	PW25055129
Price	\$868,000
Bedrooms	3
Bathrooms	2.00
Full Baths	2
Square Footage	1,603
Acres	0.15
Year Built	1977
Type	Residential

Sub-Type	Single Family Residence
Style	Contemporary
Status	Closed
Listing Agent	Roseann Oesterreich
Listing Office	Berkshire Hathaway HomeServices California Properties

Community Information

Address	923 Sand Spoling Avenue
Area	678 - N. Whittier
Subdivision	N/A
City	Whittier
County	Los Angeles
Zip Code	90601

Amenities

Utilities	Electricity Connected, Phone Available, Sewer Connected, Water Connected, Natural Gas Connected
Parking Spaces	2
Parking	Concrete, Direct Access, Driveway, Garage, Garage Faces Front
# of Garages	2
Garages	Concrete, Direct Access, Driveway, Garage, Garage Faces Front
View	None
Pool	None
Security	Carbon Monoxide Detector(s), Smoke Detector(s), Prewired

Exterior

Exterior	Stucco, Copper Plumbing
Lot Description	Back Yard, Cul-De-Sac, Front Yard, Gentle Sloping, Walkstreet
Construction	Stucco, Copper Plumbing
Foundation	Slab

Interior

Interior	Carpet, Tile
Interior Features	Ceiling Fan(s), Separate/Formal Dining Room, All Bedrooms Down, Bedroom on Main Level, Block Walls, Granite Counters, Main Level Primary, Pantry
Appliances	Double Oven, Dishwasher, Gas Cooktop, Disposal, Gas Water Heater, Microwave, Electric Oven
Heating	Central, Fireplace(s)
Cooling	Central Air

Fireplace	Yes
Fireplaces	Gas, Living Room
# of Stories	1
Stories	One

School Information

District	Whittier Union High
----------	---------------------

Additional Information

Date Listed	April 15th, 2025
Days on Market	8
Zoning	LCR17200*
Short Sale	N
RE / Bank Owned	N

Based on information from California Regional Multiple Listing Service, Inc. as of January 30th, 2026 at 2:15pm PST. This information is for your personal, non-commercial use and may not be used for any purpose other than to identify prospective properties you may be interested in purchasing. Display of MLS data is usually deemed reliable but is NOT guaranteed accurate by the MLS. Buyers are responsible for verifying the accuracy of all information and should investigate the data themselves or retain appropriate professionals. Information from sources other than the Listing Agent may have been included in the MLS data. Unless otherwise specified in writing, Broker/Agent has not and will not verify any information obtained from other sources. The Broker/Agent providing the information contained herein may or may not have been the Listing and/or Selling Agent.