

# \$2,750 - 1427 Scholarship, Irvine

MLS® #PW25013985

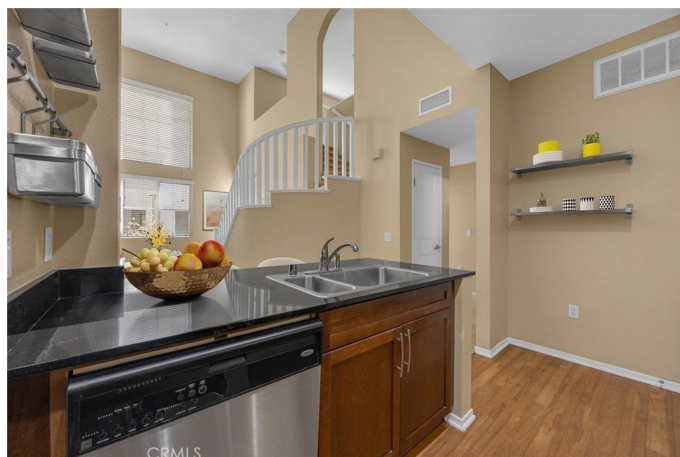
---

## \$2,750

1 Bedroom, 1.00 Bathroom, 895 sqft  
Residential Lease on 0 Acres

Avenue One (AVE1), Irvine,

Welcome to this freshly painted two-level condo located in the Avenue One neighborhood situated within an ideal area of Irvine featuring a bright and open floor plan. Get ready to enjoy this inviting one bedroom, one bath unit PLUS a large open loft area only available on the upper level units of this development. Voluminous ceilings and a private balcony which is accessed from both the living room and bedroom, brings the fresh air indoors and expanding the versatility of the floorplan. Open to the two-story great room is the kitchen complete with natural wood cabinetry, sleek granite countertops, stainless appliances including brand new microwave, and a convenient dining counter. Desirable features include a soothing neutral palette, recessed lighting, brushed nickel hardware and a deep soaking tub to relax in. This unit offers two parking spaces, and is situated close to your favorite shopping, dining, and theaters. Ideal commuter friendly location near the 5, 405 and toll roads.



Built in 2007

## Essential Information

MLS® #	PW25013985
Price	\$2,750
Bedrooms	1
Bathrooms	1.00
Full Baths	1

Square Footage	895
Acres	0.00
Year Built	2007
Type	Residential Lease
Sub-Type	Condominium
Status	Closed
Listing Agent	Steven Young
Listing Office	BHHS CA Properties

## Community Information

Address	1427 Scholarship
Area	AA - Airport Area
Subdivision	Avenue One (AVE1)
City	Irvine
County	Orange
Zip Code	92612

## Amenities

Amenities	Clubhouse, Fitness Center, Barbecue, Pool, Spa/Hot Tub
Utilities	Association Dues, Pool, Trash Collection
Parking Spaces	2
Parking	Assigned, Controlled Entrance, Guest, Off Street, One Space
# of Garages	2
Garages	Assigned, Controlled Entrance, Guest, Off Street, One Space
View	None
Has Pool	Yes
Pool	Association, In Ground
Security	Key Card Entry

## Exterior

Exterior Features	Lighting
Windows	Screens, Blinds

## Interior

Interior	Carpet, Laminate
Interior Features	Breakfast Bar, Granite Counters, High Ceilings, Open Floorplan, Recessed Lighting, All Bedrooms Down, Loft, Balcony, Cathedral Ceiling(s), Two Story Ceilings
Appliances	Dishwasher, Disposal, Microwave, Refrigerator, Dryer, Washer, Gas Range

Heating	Forced Air
Cooling	Central Air
Fireplaces	None
# of Stories	2
Stories	Two

### **School Information**

District	Santa Ana Unified
Elementary	James Monroe
Middle	McFadden
High	Century

### **Additional Information**

Date Listed	January 20th, 2025
Days on Market	35
Short Sale	N
RE / Bank Owned	N

Based on information from California Regional Multiple Listing Service, Inc. as of February 7th, 2026 at 2:45pm PST. This information is for your personal, non-commercial use and may not be used for any purpose other than to identify prospective properties you may be interested in purchasing. Display of MLS data is usually deemed reliable but is NOT guaranteed accurate by the MLS. Buyers are responsible for verifying the accuracy of all information and should investigate the data themselves or retain appropriate professionals. Information from sources other than the Listing Agent may have been included in the MLS data. Unless otherwise specified in writing, Broker/Agent has not and will not verify any information obtained from other sources. The Broker/Agent providing the information contained herein may or may not have been the Listing and/or Selling Agent.