

\$499,900 - 600 Cherry Avenue # 3, Long Beach

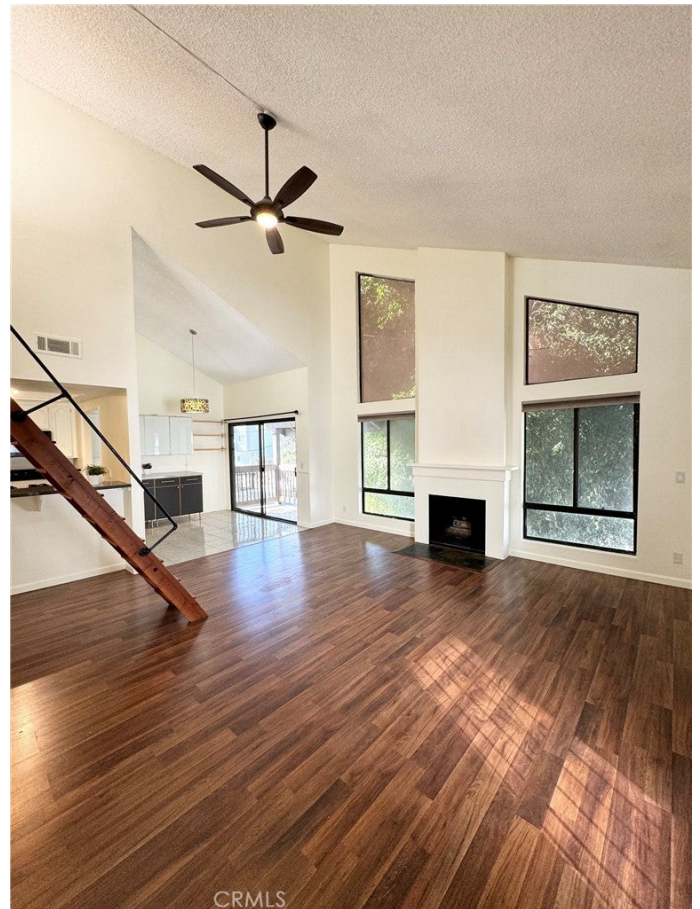
MLS® #PW24209951

\$499,900

2 Bedroom, 2.00 Bathroom, 965 sqft
Residential on 0 Acres

Cherry Manor, Long Beach,

Experience the pinnacle of luxurious living in this exceptional two-bedroom condo, complete with a loft and a private two-car garage. The expansive open floor plan is designed to impress, featuring soaring vaulted ceilings, striking second-story windows, and a sophisticated gas fireplace with mantle. Sleek laminate flooring flows seamlessly into the hallway, while pendant lighting, floating shelves, and accent cabinets create a refined dining experience. Step onto the private balcony to enjoy the gentle ocean breeze—an idyllic setting for alfresco dining and relaxation. The gourmet kitchen is a masterpiece of elegance and functionality, showcasing attractive white cabinetry, exquisite quartz countertops, a convenient breakfast bar, gas range, designer lighting, and stylish tile floors. Ascend to the stunning loft, where built-in bookshelves, custom storage doors, and a south-facing window create an inviting space for a home office or an intimate third bedroom. The primary suite is a tranquil retreat, featuring vaulted ceilings, mirrored wardrobe closets, wide-plank laminate flooring, and a spa-inspired ensuite bathroom. This indulgent space includes a gorgeous walk-in shower with clear glass sliders, a sleek contemporary vanity, luxurious floor tiles, and ample linen storage. The second bedroom offers equal comfort with wide-plank laminate flooring and generous closet space, while the guest bathroom is equally opulent, featuring a shower-over-tub



combination, a vessel sink vanity, and beautiful tile flooring. This top-floor, end-unit residence also boasts a private laundry area, hallway linen cabinets, and central heating. What truly elevates this home is the rare two-car garage, complete with a newer door, automatic opener, finished walls, and abundant storage space. Located in the exclusive five-unit, gated "Cherry Manor" community, this condo offers low HOA dues that include water and sewer. Pet lovers will appreciate the community's welcoming policy for two pets under 55 pounds. Just moments from the beach, 4th Street's Retro Row, the Rose Park historic district, Bixby Park Farmers Market, trendy coffee shops, and major freeways, this extraordinary residence is the epitome of upscale living and checks all the boxes.

Built in 1984

Essential Information

MLS® #	PW24209951
Price	\$499,900
Bedrooms	2
Bathrooms	2.00
Full Baths	2
Square Footage	965
Acres	0.17
Year Built	1984
Type	Residential
Sub-Type	Condominium
Style	Traditional
Status	Closed
Listing Agent	Jose Smith
Listing Office	Coldwell Banker Realty

Community Information

Address	600 Cherry Avenue # 3
---------	-----------------------

Area	3 - Eastside, Circle Area
Subdivision	Cherry Manor
City	Long Beach
County	Los Angeles
Zip Code	90802

Amenities

Amenities	Pet Restrictions, Pets Allowed, Water
Utilities	Cable Available, Sewer Connected, Water Connected
Parking Spaces	2
Parking	Assigned, Door-Multi, Garage, Garage Door Opener, Private
# of Garages	2
Garages	Assigned, Door-Multi, Garage, Garage Door Opener, Private
View	Courtyard, Neighborhood
Waterfront	Ocean Side Of Highway
Pool	None
Security	Carbon Monoxide Detector(s), Gated Community, Smoke Detector(s)

Exterior

Exterior	Stucco
Lot Description	Near Public Transit
Windows	Blinds
Roof	Composition, Shingle
Construction	Stucco
Foundation	Slab

Interior

Interior	Laminate, Tile
Interior Features	Balcony, Breakfast Area, Ceiling Fan(s), Cathedral Ceiling(s), Separate/Formal Dining Room, High Ceilings, Open Floorplan, Paneling/Wainscoting, Quartz Counters, All Bedrooms Down, Galley Kitchen, Loft, Primary Suite
Appliances	Dishwasher, Electric Range, Disposal, Gas Range, Gas Water Heater, Microwave, Refrigerator
Heating	Central, Forced Air
Cooling	None
Fireplace	Yes
Fireplaces	Gas, Living Room
# of Stories	2
Stories	Two

School Information

District Long Beach Unified

Additional Information

Date Listed November 12th, 2024
Zoning LBR1N
Short Sale N
RE / Bank Owned N

Based on information from California Regional Multiple Listing Service, Inc. as of December 23rd, 2025 at 8:15pm PST. This information is for your personal, non-commercial use and may not be used for any purpose other than to identify prospective properties you may be interested in purchasing. Display of MLS data is usually deemed reliable but is NOT guaranteed accurate by the MLS. Buyers are responsible for verifying the accuracy of all information and should investigate the data themselves or retain appropriate professionals. Information from sources other than the Listing Agent may have been included in the MLS data. Unless otherwise specified in writing, Broker/Agent has not and will not verify any information obtained from other sources. The Broker/Agent providing the information contained herein may or may not have been the Listing and/or Selling Agent.