

\$1,199,000 - 4520 San Andreas Avenue, Los Angeles

MLS® #P1-21812

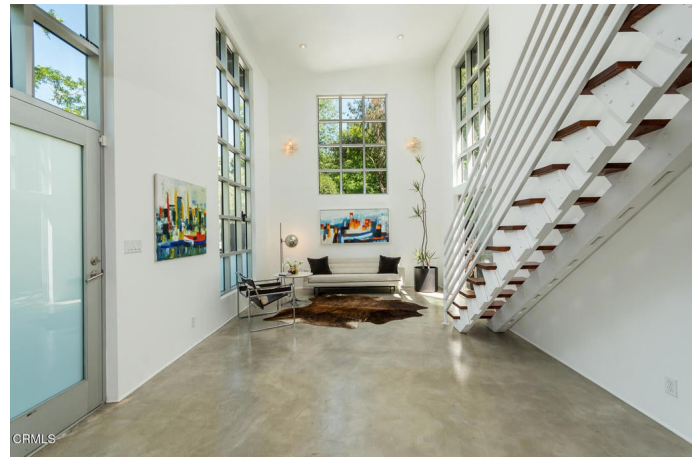
\$1,199,000

2 Bedroom, 1.00 Bathroom, 1,355 sqft

Residential on 0 Acres

N/A, Los Angeles,

Set high above the city in the hills of Mt. Washington, this stunning architectural home offers the perfect blend of modern style and a peaceful retreat. With clean modern lines, open-concept living spaces, and floor-to-ceiling windows, natural light floods the interior while framing sweeping views. It seamlessly blends modern design with a deep reverence for the natural surroundings, creating a living experience that's both luxurious and harmonious. The home is elegantly set back from the street, creating a sense of privacy and tranquility. Surrounded by an abundant display of lush greenery, it offers a picturesque view of the sparkling city lights at night and, on clear days, the majestic mountains in the distance. With its captivating surroundings and breathtaking vistas from both sides, this location truly embodies a serene and idyllic oasis. The interior features the best of mid-century modern design with clean lines and large windows of glass that blur the line between indoors and out, creating a bright and airy living space. Soft and clean walls of white, and polished concrete floors are the perfect palette to showcase collectable pieces of art. There are two spacious bedrooms and a thoughtfully appointed bathroom. The large primary bedroom faces west and enjoys sliding doors that opens to the private front patio. The spa-inspired bathroom features beautiful white custom tile and transom windows that offer beautiful views of the greenery beyond. The sleek kitchen,



offers ample cabinetry, quartz countertops, and stainless steel appliances, flows seamlessly into the dining and living areas ideal for both entertaining and quiet evenings in. Outdoors, enjoy a terraced backyard with multiple seating areas, ideal for al fresco dining or morning coffee. With easy access to hiking trails, local hotspots, and downtown LA, this Mt. Washington retreat is contemporary living at its best.

Built in 1953

Essential Information

MLS® #	P1-21812
Price	\$1,199,000
Bedrooms	2
Bathrooms	1.00
Full Baths	1
Square Footage	1,355
Acres	0.30
Year Built	1953
Type	Residential
Sub-Type	Single Family Residence
Style	Contemporary, Mid-Century Modern
Status	Closed
Listing Agent	Christopher Suarez
Listing Office	COMPASS

Community Information

Address	4520 San Andreas Avenue
Subdivision	N/A
City	Los Angeles
County	Los Angeles
Zip Code	90065

Amenities

Parking Spaces	2
# of Garages	2

View	Mountain(s)
Pool	None

Exterior

Lot Description	Sprinklers Timer
Roof	Flat

Interior

Interior	Concrete
Interior Features	High Ceilings, Open Floorplan, Quartz Counters, Bedroom on Main Level
Appliances	Dishwasher, Electric Oven, Gas Cooktop, Gas Water Heater, Range Hood
Heating	Central
Cooling	Central Air
Fireplaces	None
Stories	Two

School Information

Elementary	Mt Washington
High	Franklin

Additional Information

Date Listed	April 18th, 2025
Days on Market	35
Short Sale	N
RE / Bank Owned	N

Based on information from California Regional Multiple Listing Service, Inc. as of January 1st, 2026 at 8:52pm PST. This information is for your personal, non-commercial use and may not be used for any purpose other than to identify prospective properties you may be interested in purchasing. Display of MLS data is usually deemed reliable but is NOT guaranteed accurate by the MLS. Buyers are responsible for verifying the accuracy of all information and should investigate the data themselves or retain appropriate professionals. Information from sources other than the Listing Agent may have been included in the MLS data. Unless otherwise specified in writing, Broker/Agent has not and will not verify any information obtained from other sources. The Broker/Agent providing the information contained herein may or may not have been the Listing and/or Selling Agent.