

\$705,000 - 985 California Boulevard # 301, Pasadena

MLS® #P1-21317

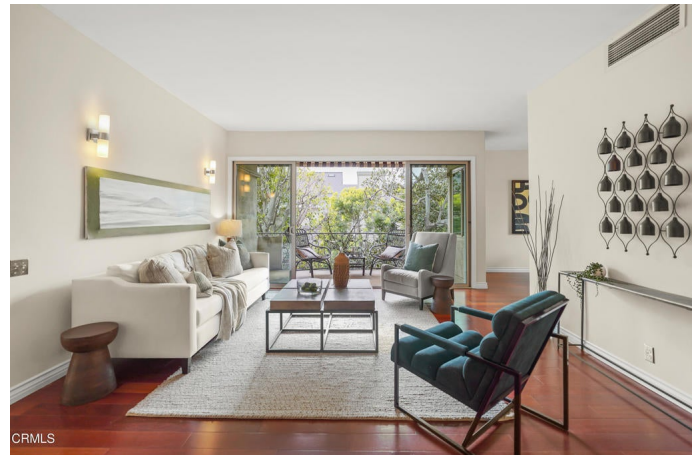
\$705,000

2 Bedroom, 2.00 Bathroom, 1,224 sqft

Residential on 0 Acres

N/A, Pasadena,

Step into this stunning Mid Century Modern condo, where sophistication meets everyday convenience. This expansive 2-bedroom, 2-bathroom light filled top-floor end unit has high ceilings, a great floorplan, beautiful treetop views and an abundance of oversized windows and balcony spaces. A welcoming entry leads to the spacious and bright living room with large sliding glass doors that open to a large balcony. The lovely views make it an ideal space to enjoy your morning coffee. The impressive kitchen boasts sleek cabinetry with ample storage, stainless steel appliances and French doors opening to the spacious dining room which provides views from multiple sets of windows. Down the hall, the impressive primary suite with a good-sized closet is magnificent. It blends cool mid-century character with amazing views from a second balcony. Down the hall, there is a second bedroom as well as a full bathroom. A combination washer/dryer inside the unit creates ease for everyday living and there is also a community laundry if there is a need. There is lush greenery surrounding the complex, a sparkling pool and spa and a community barbeque area. The HOA dues cover lots of extras, including earthquake insurance, hot water and electricity usage for the cooling system within the unit (so the homeowner's electricity bills are quite reasonable!). One parking space is included with the unit and there are also multiple owner overflow parking spaces. Located in a



fabulous pocket of Pasadena, the condo is close to Caltech, supermarkets such as Erewhon and Trader Joe's, plus many additional restaurant and shopping options. Welcome home!

Built in 1964

Essential Information

MLS® #	P1-21317
Price	\$705,000
Bedrooms	2
Bathrooms	2.00
Full Baths	1
Square Footage	1,224
Acres	0.00
Year Built	1964
Type	Residential
Sub-Type	Condominium
Style	Mid-Century Modern
Status	Closed
Listing Agent	Jenan Musulli
Listing Office	Coldwell Banker Realty

Community Information

Address	985 California Boulevard # 301
Area	648 - Pasadena (SE)
Subdivision	N/A
City	Pasadena
County	Los Angeles
Zip Code	91106

Amenities

Amenities	Maintenance Grounds, Management, Pool, Pet Restrictions, Pets Allowed, Spa/Hot Tub, Trash, Barbecue, Hot Water, Insurance, Outdoor Cooking Area, Storage, Water
Parking Spaces	1
Parking	Assigned, Covered, Carport, Guest, Gated, Storage
# of Garages	1

Garages	Assigned, Covered, Carport, Guest, Gated, Storage
View	Trees/Woods
Has Pool	Yes
Pool	Community, Fenced, In Ground, Association, Heated
Security	Security Gate

Exterior

Exterior Features	Balcony
Lot Description	Landscaped
Windows	Double Pane Windows, Skylight(s)

Interior

Interior	Tile, Wood
Interior Features	Primary Suite, Walk-In Closet(s), Balcony, Dressing Area, Entrance Foyer, Separate/Formal Dining Room
Appliances	Dishwasher, Electric Range, Microwave, Refrigerator, Dryer, Washer
Heating	Forced Air
Cooling	Central Air
Fireplaces	None
# of Stories	3
Stories	One

Additional Information

Date Listed	March 19th, 2025
Days on Market	12
Short Sale	N
RE / Bank Owned	N

Based on information from California Regional Multiple Listing Service, Inc. as of February 9th, 2026 at 11:28am PST. This information is for your personal, non-commercial use and may not be used for any purpose other than to identify prospective properties you may be interested in purchasing. Display of MLS data is usually deemed reliable but is NOT guaranteed accurate by the MLS. Buyers are responsible for verifying the accuracy of all information and should investigate the data themselves or retain appropriate professionals. Information from sources other than the Listing Agent may have been included in the MLS data. Unless otherwise specified in writing, Broker/Agent has not and will not verify any information obtained from other sources. The Broker/Agent providing the information contained herein may or may not have been the Listing and/or Selling Agent.