

\$799,000 - 15510 Hornell Street, Whittier

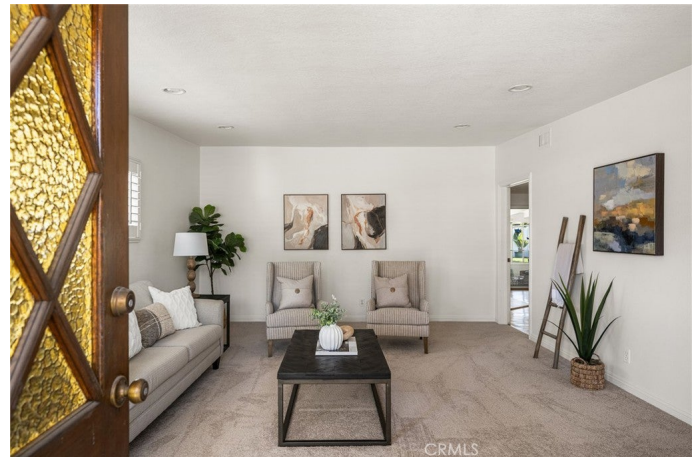
MLS® #OC25218378

\$799,000

3 Bedroom, 2.00 Bathroom, 1,560 sqft
Residential on 0 Acres

N/A, Whittier,

Tucked away on a quiet residential street, this beautifully maintained 3-bedroom, 2-bathroom home offers a rare blend of privacy, charm, and effortless Southern California living—all on a single level. Ideally situated within the highly regarded La Serna High School district (rated 9/10), it promises both daily convenience and long-term comfort. Step inside and you're greeted by an abundance of natural light filling every corner of the home, creating a warm and inviting atmosphere throughout. The spacious, open-concept layout has been thoughtfully updated, with no details overlooked. A flexible oversized living room offers the perfect setting for relaxation, entertaining, or customizing into a multiuse space to fit your lifestyle. The open kitchen is as functional as it is stylish, featuring upgraded cabinetry, gleaming granite countertops, and a full suite of stainless-steel appliances. Whether you're preparing a quiet dinner or hosting family and friends in the large dining room, the flow is seamless. A bonus sunroom extends your living space and offers serene views of the lush backyard, now newly upgraded with low-maintenance vinyl fencing. Mature landscaping and expansive grassy areas make it ideal for outdoor gatherings, gardening, or simply enjoying the California sunshine. Both bathrooms have been remodeled with granite countertops and extended vanities, with a walk-in shower for added comfort and accessibility. Additional highlights include a newly upgraded central



A/C system, a spacious 2-car garage, and an oversized driveway for flexible parking. Enjoy the charm of Whittier livingâ€”with top-tier schools, nearby commuter routes, and room to grow. Your next chapter starts here.

Built in 1952

Essential Information

MLS® #	OC25218378
Price	\$799,000
Bedrooms	3
Bathrooms	2.00
Full Baths	2
Square Footage	1,560
Acres	0.15
Year Built	1952
Type	Residential
Sub-Type	Single Family Residence
Style	Contemporary
Status	Closed
Listing Agent	Maxwell Carr
Listing Office	First Team Real Estate

Community Information

Address	15510 Hornell Street
Area	670 - Whittier
Subdivision	N/A
City	Whittier
County	Los Angeles
Zip Code	90604

Amenities

Utilities	Electricity Connected, Sewer Connected, Water Connected, Cable Connected, Natural Gas Connected, Phone Connected
Parking Spaces	2
Parking	Driveway, Garage, Door-Single, Garage Faces Front, Oversized, RV Access/Parking
# of Garages	2

Garages	Driveway, Garage, Door-Single, Garage Faces Front, Oversized, RV Access/Parking
View	None
Pool	None
Security	Carbon Monoxide Detector(s), Smoke Detector(s)

Exterior

Exterior	Frame, Stucco, Copper Plumbing
Exterior Features	Rain Gutters, Awning(s)
Lot Description	Back Yard, Front Yard, Sprinklers In Front, Lawn, Yard, Greenbelt, Landscaped, Level, Rectangular Lot, Sprinklers In Rear, Sprinkler System
Windows	Screens, Plantation Shutters, Shutters
Roof	Flat, Rolled/Hot Mop
Construction	Frame, Stucco, Copper Plumbing
Foundation	Raised

Interior

Interior	Carpet, Wood, Tile
Interior Features	Separate/Formal Dining Room, All Bedrooms Down, Bedroom on Main Level, Main Level Primary, Built-in Features, Ceiling Fan(s), Eat-in Kitchen, Granite Counters, Open Floorplan, Primary Suite, Recessed Lighting, Stone Counters
Appliances	Gas Oven, Microwave, Refrigerator, Disposal, Freezer, Gas Cooktop, Ice Maker, Range Hood, Self Cleaning Oven, Vented Exhaust Fan, Water Heater, Water To Refrigerator
Heating	Forced Air, Natural Gas
Cooling	Central Air
Fireplace	Yes
Fireplaces	Living Room, Wood Burning, Gas, Gas Starter, Masonry, Raised Hearth
# of Stories	1
Stories	One

School Information

District	East Whittier Unified
Elementary	Scott
Middle	Granada
High	La Serna

Additional Information

Date Listed	September 17th, 2025
Days on Market	8

Short Sale N

RE / Bank Owned N

Based on information from California Regional Multiple Listing Service, Inc. as of February 15th, 2026 at 11:56am PST. This information is for your personal, non-commercial use and may not be used for any purpose other than to identify prospective properties you may be interested in purchasing. Display of MLS data is usually deemed reliable but is NOT guaranteed accurate by the MLS. Buyers are responsible for verifying the accuracy of all information and should investigate the data themselves or retain appropriate professionals. Information from sources other than the Listing Agent may have been included in the MLS data. Unless otherwise specified in writing, Broker/Agent has not and will not verify any information obtained from other sources. The Broker/Agent providing the information contained herein may or may not have been the Listing and/or Selling Agent.