

\$4,400 - 3141 Michelson # 507, Irvine

MLS® #OC25172076

\$4,400

2 Bedroom, 2.00 Bathroom, 1,330 sqft
Residential Lease on 0 Acres

Marquee at Park Place (MARQ), Irvine,

Fully furnished 2-bedroom plus den located in the heart of Irvine, in the luxurious Marquee Park Place towers. Enjoy the comfort and security of 24-hour gated parking and concierge services tailored to your daily needs.

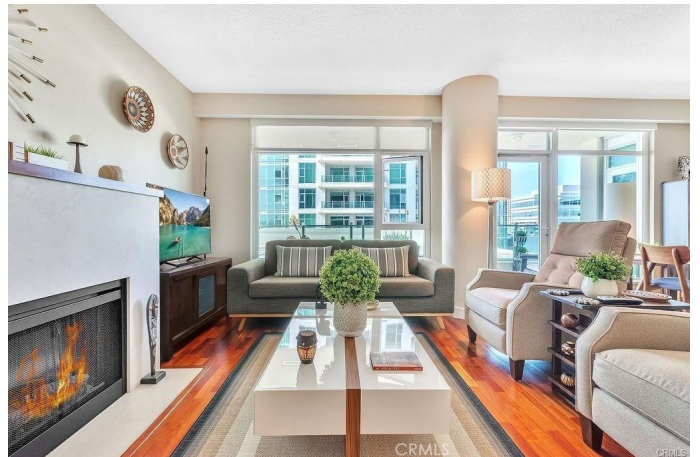
This prime location offers convenient access to upscale dining, supermarkets, local shops, and renowned shopping destinations like South Coast Plaza, Irvine Spectrum, and Fashion Island. Frequent traveler? John Wayne Airport is just minutes away for your flying convenience. Plus, with easy access to the 405 freeway, getting around Orange County is a breeze.

Love the outdoors? Whether you're heading to Newport Beach for a relaxing day by the ocean or venturing inland for a scenic hike, beautiful nature experiences await in every direction.

Built in 2006

Essential Information

MLS® #	OC25172076
Price	\$4,400
Bedrooms	2
Bathrooms	2.00
Full Baths	2
Square Footage	1,330
Acres	0.00



Year Built	2006
Type	Residential Lease
Sub-Type	Condominium
Style	Contemporary
Status	Closed
Listing Agent	Rashin Amini
Listing Office	White House Property Management, Inc

Community Information

Address	3141 Michelson # 507
Area	AA - Airport Area
Subdivision	Marquee at Park Place (MARQ)
City	Irvine
County	Orange
Zip Code	92612

Amenities

Amenities	Pool, Barbecue, Billiard Room, Clubhouse, Fitness Center, Game Room, Guard, Spa/Hot Tub
Utilities	Association Dues, Pool, Sewer, Trash Collection, Water
Parking Spaces	4
Parking	None
# of Garages	2
Garages	None
View	Neighborhood, City Lights, Hills, Mountain(s)
Has Pool	Yes
Pool	Association, Heated
Security	Carbon Monoxide Detector(s), Smoke Detector(s), Closed Circuit Camera(s), Fire Detection System, Fire Rated Drywall, Gated Community, Gated with Attendant, Gated with Guard, Security Gate, Security Guard, Security Lights, 24 Hour Security, Window Bars

Exterior

Windows	Custom Covering(s), Double Pane Windows
---------	---

Interior

Interior	Wood
Interior Features	Breakfast Bar, Open Floorplan, Balcony, Bedroom on Main Level, Furnished, Granite Counters, Living Room Deck Attached, Main Level Primary, Storage
Appliances	Dishwasher, Gas Oven, Gas Range, Convection Oven, Gas Cooktop

Heating	Central
Cooling	Central Air
Fireplace	Yes
Fireplaces	Family Room
# of Stories	18
Stories	One

School Information

District	Santa Ana Unified
----------	-------------------

Additional Information

Date Listed	July 31st, 2025
Days on Market	75
Short Sale	N
RE / Bank Owned	N

Based on information from California Regional Multiple Listing Service, Inc. as of February 11th, 2026 at 7:56am PST. This information is for your personal, non-commercial use and may not be used for any purpose other than to identify prospective properties you may be interested in purchasing. Display of MLS data is usually deemed reliable but is NOT guaranteed accurate by the MLS. Buyers are responsible for verifying the accuracy of all information and should investigate the data themselves or retain appropriate professionals. Information from sources other than the Listing Agent may have been included in the MLS data. Unless otherwise specified in writing, Broker/Agent has not and will not verify any information obtained from other sources. The Broker/Agent providing the information contained herein may or may not have been the Listing and/or Selling Agent.