

# \$624,900 - 1070 Calle Del Cerro # 1606, San Clemente

MLS® #OC24035241

---

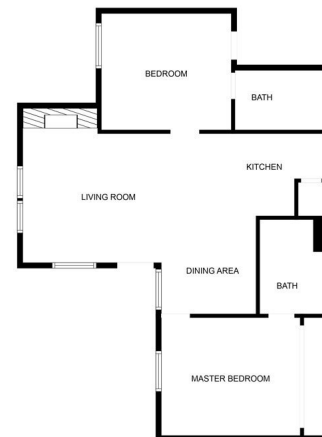
## \$624,900

2 Bedroom, 2.00 Bathroom, 823 sqft

Residential on 0 Acres

Vista Pacifica (VP), San Clemente,

This top-floor unit is a gem, boasting impeccable maintenance and upgrades throughout. As you step inside, you're greeted by stunning hardwood floors that span the entire home, lending a sense of warmth and elegance. The kitchen has been thoughtfully modernized with open shelving, designer colors, and top-of-the-line appliances, making it a joy for cooking enthusiasts and entertainers alike. The primary bedroom is a retreat in itself, featuring an en suite bathroom and a spacious walk-in closet for all your storage needs. Vaulted ceilings add to the sense of space and airiness, while the upgraded hardwood flooring and remodeled kitchen elevate the home's aesthetic appeal. Bathrooms have been tastefully updated with designer materials, complemented by new lighting fixtures and closet organizers for added convenience. Step out onto the private patio to enjoy views of the pool and rolling hills, creating a serene backdrop for relaxation or entertaining guests. Situated in an ocean-view community, residents have access to a pool, spa, and nearby trails, perfect for staying active and enjoying the outdoors. Additionally, the proximity to a Lifetime Fitness center ensures ample opportunities for fitness enthusiasts. Convenience is key, with the community just minutes away from beaches, shopping centers, award-winning schools, and easy freeway access. Whether you're seeking a tranquil retreat or a vibrant lifestyle, this meticulously maintained unit offers the best of



MEASUREMENTS ARE CALCULATED BY CUBICASA TECHNOLOGY. DEEMED HIGHLY RELIABLE BUT NOT GUARANTEED.

both worlds.

Built in 1986

**Essential Information**

MLS® #	OC24035241
Price	\$624,900
Bedrooms	2
Bathrooms	2.00
Full Baths	2
Square Footage	823
Acres	0.00
Year Built	1986
Type	Residential
Sub-Type	Condominium
Style	Contemporary
Status	Closed
Listing Agent	Shelly Reyland
Listing Office	Re/Max Coastal Homes

**Community Information**

Address	1070 Calle Del Cerro # 1606
Area	RS - Rancho San Clemente
Subdivision	Vista Pacifica (VP)
City	San Clemente
County	Orange
Zip Code	92672

**Amenities**

Amenities	Maintenance Grounds, Pool, Spa/Hot Tub, Trash, Trail(s)
Parking Spaces	1
Parking	Garage
# of Garages	1
Garages	Garage
View	Hills
Has Pool	Yes
Pool	Association

**Exterior**

Lot Description	16-20 Units/Acre
-----------------	------------------

## Interior

Interior	Wood
Interior Features	Ceiling Fan(s), Granite Counters, Open Floorplan, Balcony, Cathedral Ceiling(s)
Appliances	Dishwasher, Disposal, Dryer, Washer
Heating	Forced Air
Cooling	None
Fireplace	Yes
Fireplaces	Family Room
# of Stories	1
Stories	One

## School Information

District	Capistrano Unified
Middle	Shorecliff
High	San Clemente

## Additional Information

Date Listed	February 20th, 2024
Days on Market	8
Short Sale	N
RE / Bank Owned	N

Based on information from California Regional Multiple Listing Service, Inc. as of May 20th, 2024 at 6:55am PDT. This information is for your personal, non-commercial use and may not be used for any purpose other than to identify prospective properties you may be interested in purchasing. Display of MLS data is usually deemed reliable but is NOT guaranteed accurate by the MLS. Buyers are responsible for verifying the accuracy of all information and should investigate the data themselves or retain appropriate professionals. Information from sources other than the Listing Agent may have been included in the MLS data. Unless otherwise specified in writing, Broker/Agent has not and will not verify any information obtained from other sources. The Broker/Agent providing the information contained herein may or may not have been the Listing and/or Selling Agent.