

\$1,050,000 - 34108 Selva Road # 338, Dana Point

MLS® #OC23167953

\$1,050,000

2 Bedroom, 2.00 Bathroom, 1,022 sqft
Residential on 0 Acres

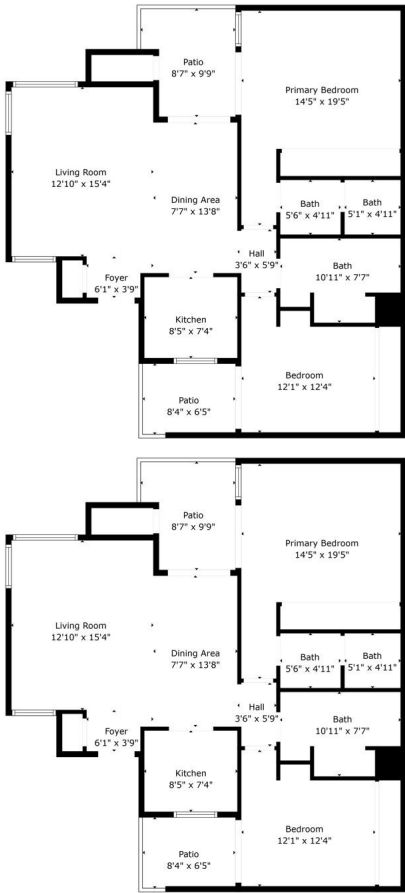
Niguel Beach Terrace (NBT), Dana Point,

Highly desirable Niguel Beach Terrace condo located directly across the street from the Strand Beach and Multi Million Dollar Custom Homes. This lower level condo is situated in one of the front buildings and offers a peek ocean view. The turnkey property features 2 bedrooms, 2 bathrooms, 2 patios and a reserved 1 car covered parking. The kitchen features quartz counters and a refrigerator is included and opens onto the dining and living rooms. Re lax and unwind on your covered patio with storage closet. There is an inside laundry with full sized washer and dryer included. Both bathrooms have been updated. The community pool, spa and clubhouse are just a short distance from your front door. HOA includes water, trash and pay as you use EV charging stations. Within minutes to shopping and dining in the Lantern District of Dana Point, the Dana Point Harbor, hiking trails, golfing, world class beaches and five star resorts.

Built in 1982

Essential Information

MLS® #	OC23167953
Price	\$1,050,000
Bedrooms	2
Bathrooms	2.00
Full Baths	2
Square Footage	1,022



Measurements Are Calculated By Cubicase Technology. Deemed Highly Reliable But Not Guaranteed.

Acres	0.00
Year Built	1982
Type	Residential
Sub-Type	Condominium
Status	Closed
Listing Agent	Dianna Mcgarvin
Listing Office	Harcourts Prime Properties

Community Information

Address	34108 Selva Road # 338
Area	MB - Monarch Beach
Subdivision	Niguel Beach Terrace (NBT)
City	Dana Point
County	Orange
Zip Code	92629

Amenities

Amenities	Clubhouse, Pool, Spa/Hot Tub, Trash, Water
Parking Spaces	1
Parking	Assigned, Carport, Electric Vehicle Charging Station(s), Guest
Garages	Assigned, Carport, Electric Vehicle Charging Station(s), Guest
View	Ocean, Peek-A-Boo, Trees/Woods
Waterfront	Ocean Side Of Highway
Has Pool	Yes
Pool	Association
Security	Smoke Detector(s)

Exterior

Windows	Double Pane Windows
---------	---------------------

Interior

Interior	Laminate
Interior Features	Ceiling Fan(s), Open Floorplan, Partially Furnished, Quartz Counters, Recessed Lighting, All Bedrooms Down, Bedroom on Main Level, Main Level Primary
Appliances	Dishwasher, Electric Range, Disposal, Refrigerator, Dryer, Washer
Heating	Heat Pump
Cooling	None
Fireplace	Yes

Fireplaces	None
# of Stories	1
Stories	One

School Information

District	Capistrano Unified
----------	--------------------

Additional Information

Date Listed	September 8th, 2023
Days on Market	2
Short Sale	N
RE / Bank Owned	N

Based on information from California Regional Multiple Listing Service, Inc. as of May 18th, 2024 at 2:55pm PDT. This information is for your personal, non-commercial use and may not be used for any purpose other than to identify prospective properties you may be interested in purchasing. Display of MLS data is usually deemed reliable but is NOT guaranteed accurate by the MLS. Buyers are responsible for verifying the accuracy of all information and should investigate the data themselves or retain appropriate professionals. Information from sources other than the Listing Agent may have been included in the MLS data. Unless otherwise specified in writing, Broker/Agent has not and will not verify any information obtained from other sources. The Broker/Agent providing the information contained herein may or may not have been the Listing and/or Selling Agent.