

\$22,000 - 4 Via Cancha, San Clemente

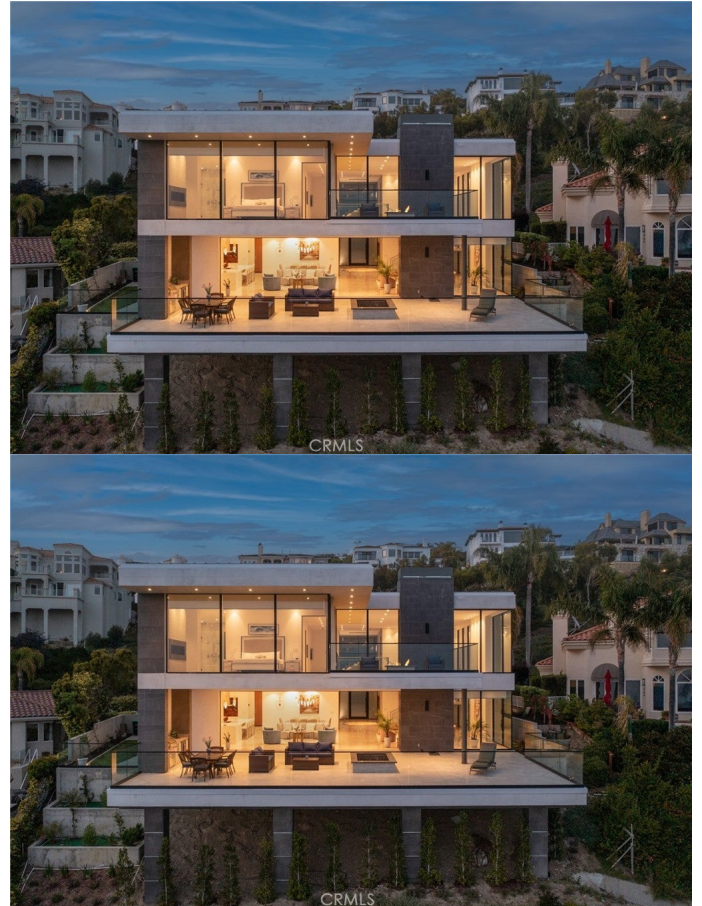
MLS® #OC23141666

\$22,000

5 Bedroom, 6.00 Bathroom, 5,742 sqft
Residential Lease on 0 Acres

Sea Pointe Estates (SPE), San Clemente,

Welcome to 4 Via Cancha. This stunning new construction home designed by the acclaimed Whipple Russell Architects offers unobstructed 180-degree panoramic ocean views spanning from San Diego to Dana Point. Perched atop a premium hilltop lot in the exclusive 24-hour guard-gated community of Sea Pointe Estates, this modern home provides ultimate privacy and security. As you enter through the pivot front door you are greeted by the expansive 5742 sq ft living space with 23-foot-high ceilings and a fireplace spanning two stories. The extra spacious back deck seamlessly opens into the living space creating an indoor/outdoor feel that is perfect for Southern California living, watching the sunset over the ocean. The fire pit provides additional outdoor entertainment options. Curated with distinctive high-end designer finishes, the 5 bedroom, 5 ½ bathroom home boasts top quality master craftsmanship including 9-foot walnut interior doors, European Oak floors upstairs, and an open concept designer kitchen with a back kitchen for food prep. The 16-foot long quartz waterfall kitchen island and built-in Thermador appliances make it the perfect place for hosting guests or preparing gourmet meals. The luxurious master suite features a fireplace, Cambria quartz countertops, double vanity, a sleek freestanding bathtub, and an oversized shower and walk-in closet. Step out onto the balcony with a fire pit and take in the breathtaking views while enjoying the warmth of the fire. Floor-to-ceiling windows throughout



Built in 2022

MLS® #	OC23141666
Price	\$22,000
Bedrooms	5
Bathrooms	6.00
Full Baths	5
Half Baths	1
Square Footage	5,742
Acres	0.31
Year Built	2022
Type	Residential Lease
Sub-Type	Single Family Residence
Style	Contemporary, Custom, Modern
Status	Closed
Listing Agent	Ron Pineda
Listing Office	Keller Williams Realty

Address	4 Via Cancha
Area	SN - San Clemente North
Subdivision	Sea Pointe Estates (SPE)
City	San Clemente

County	Orange
Zip Code	92673

Amenities

Amenities	Clubhouse, Barbecue, Pool, Guard, Spa/Hot Tub, Tennis Court(s)
Utilities	Cable Connected, Electricity Connected, Natural Gas Connected, Sewer Connected, Water Connected, Association Dues
Parking Spaces	3
Parking	Concrete, Direct Access, Door-Single, Driveway, Garage Faces Front, Garage, Garage Door Opener
# of Garages	3
Garages	Concrete, Direct Access, Door-Single, Driveway, Garage Faces Front, Garage, Garage Door Opener
View	City Lights, Coastline, Golf Course, Hills, Ocean, Panoramic, Water
Has Pool	Yes
Pool	Community, Fenced, Filtered, Heated, In Ground, Salt Water, Association
Security	Prewired, Carbon Monoxide Detector(s), Fire Detection System, Fire Sprinkler System, Security Gate, Gated with Guard, Gated Community, Gated with Attendant, 24 Hour Security, Smoke Detector(s)

Exterior

Exterior	Drywall, Ducts Professionally Air-Sealed, Glass, Concrete, Plaster, Stucco, Steel
Exterior Features	Barbecue, Fire Pit
Lot Description	0-1 Unit/Acre, Cul-De-Sac, Sloped Down, Front Yard, Garden, Sprinklers In Rear, Sprinklers In Front, Irregular Lot, Lawn, Landscaped, Near Park, Near Public Transit, Paved, Steep Slope, Sprinklers Timer, Sprinklers On Side, Sprinkler System, Street Level
Windows	Custom Covering(s), Double Pane Windows, Screens, Skylight(s)
Roof	Metal
Construction	Drywall, Ducts Professionally Air-Sealed, Glass, Concrete, Plaster, Stucco, Steel
Foundation	Concrete Perimeter, Slab, Tie Down

Interior

Interior	Tile, Wood
Interior Features	Built-in Features, Balcony, High Ceilings, Living Room Deck Attached, Open Floorplan, Quartz Counters, Recessed Lighting, Storage, Two Story Ceilings, Wired for Data, Wired for Sound, Instant Hot Water, Primary Suite, Utility Room, Walk-In Pantry, Walk-In Closet(s)

Appliances	Built-In Range, Barbecue, Convection Oven, ENERGY STAR Qualified Appliances, ENERGY STAR Qualified Water Heater, Electric Cooktop, Electric Oven, Electric Range, Free-Standing Range, Freezer, Gas Cooktop, Disposal, Gas Oven, Gas Range, Gas Water Heater, High Efficiency Water Heater, Hot Water Circulator, Ice Maker, Microwave, Refrigerator, Range Hood
Heating	Combination, Central, ENERGY STAR Qualified Equipment, Forced Air, Fireplace(s), Natural Gas, Zoned
Cooling	Central Air, ENERGY STAR Qualified Equipment, Zoned
Fireplace	Yes
Fireplaces	Bath, Living Room
# of Stories	2
Stories	Two

School Information

District	Capistrano Unified
Elementary	Palisades
Middle	Shorecliff
High	San Clemente

Additional Information

Date Listed	July 31st, 2023
Days on Market	55
Zoning	R3
Short Sale	N
RE / Bank Owned	N

Based on information from California Regional Multiple Listing Service, Inc. as of May 18th, 2024 at 10:55am PDT. This information is for your personal, non-commercial use and may not be used for any purpose other than to identify prospective properties you may be interested in purchasing. Display of MLS data is usually deemed reliable but is NOT guaranteed accurate by the MLS. Buyers are responsible for verifying the accuracy of all information and should investigate the data themselves or retain appropriate professionals. Information from sources other than the Listing Agent may have been included in the MLS data. Unless otherwise specified in writing, Broker/Agent has not and will not verify any information obtained from other sources. The Broker/Agent providing the information contained herein may or may not have been the Listing and/or Selling Agent.