

# \$5,500 - 613 Poinsettia Avenue # 1/2, Corona Del Mar

MLS® #NP25105555

---

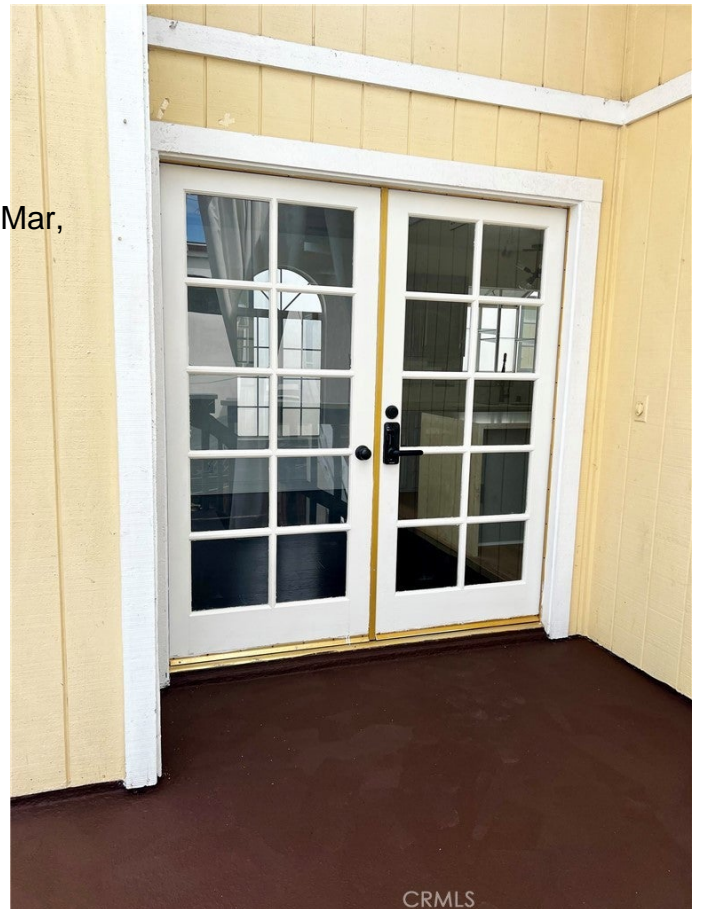
## \$5,500

3 Bedroom, 2.00 Bathroom, 1,300 sqft

Residential Lease on 0 Acres

Corona del Mar North of PCH (CNHW), Corona Del Mar,

Located in the prestigious Flower Streets of Corona Del Mar, this lovely upstairs back house offers an opportunity to live the coastal lifestyle. The newly remodeled kitchen showcases newer finishes perfect for everyday living. The home features three bedrooms and two bathrooms which provide comfortable living space, while the private patio delivers the ultimate Corona Del Mar beach experience. The convenience of a dedicated, covered shared parking space and 1 carport adds invaluable peace of mind in this sought-after neighborhood. Just moments from Corona Del Mar's vibrant shopping, pristine coastal beaches, and world-class dining, this home in one of Orange County's most desirable communities is an opportunity that can not be missed.



Built in 1989

## Essential Information

MLS® #	NP25105555
Price	\$5,500
Bedrooms	3
Bathrooms	2.00
Full Baths	2
Square Footage	1,300
Acres	0.11
Year Built	1989
Type	Residential Lease

Sub-Type	Duplex
Style	Cottage
Status	Closed
Listing Agent	Jorge Portillo
Listing Office	Compass

## Community Information

Address	613 Poinsettia Avenue # 1/2
Area	CS - Corona Del Mar - Spyglass
Subdivision	Corona del Mar North of PCH (CNHW)
City	Corona Del Mar
County	Orange
Zip Code	92625

## Amenities

Utilities	Water
Parking Spaces	2
Parking	Garage
# of Garages	1
Garages	Garage
View	None
Pool	None

## Exterior

Lot Description	Rectangular Lot
-----------------	-----------------

## Interior

Interior Features	Built-in Features, Eat-in Kitchen, Open Floorplan, Unfurnished, All Bedrooms Up, Walk-In Closet(s)
Appliances	Dishwasher, Gas Range, Microwave, Refrigerator, Dryer, Washer
Heating	Forced Air
Cooling	Central Air
Fireplace	Yes
Fireplaces	Living Room
# of Stories	1
Stories	One

## School Information

District	Newport Mesa Unified
----------	----------------------

Elementary	Harbor View
High	Corona Del Mar

### **Additional Information**

Date Listed	May 12th, 2025
Days on Market	14
Short Sale	N
RE / Bank Owned	N

Based on information from California Regional Multiple Listing Service, Inc. as of January 31st, 2026 at 7:50pm PST. This information is for your personal, non-commercial use and may not be used for any purpose other than to identify prospective properties you may be interested in purchasing. Display of MLS data is usually deemed reliable but is NOT guaranteed accurate by the MLS. Buyers are responsible for verifying the accuracy of all information and should investigate the data themselves or retain appropriate professionals. Information from sources other than the Listing Agent may have been included in the MLS data. Unless otherwise specified in writing, Broker/Agent has not and will not verify any information obtained from other sources. The Broker/Agent providing the information contained herein may or may not have been the Listing and/or Selling Agent.