

\$693,000 - 3520 Parkside Drive, San Bernardino

MLS® #IV24231658

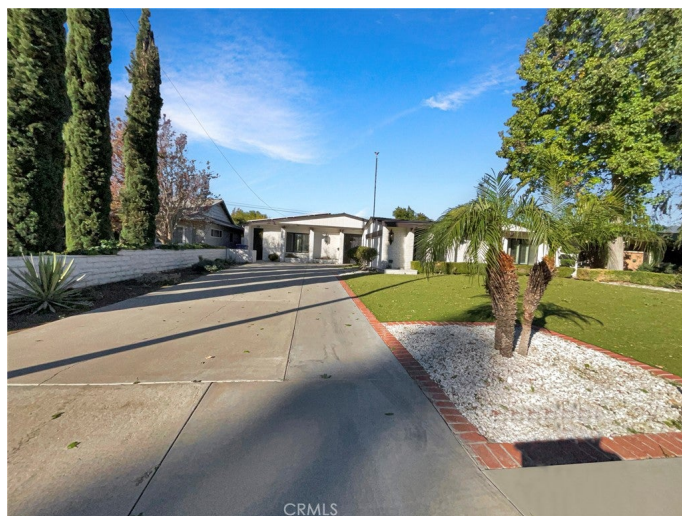
\$693,000

3 Bedroom, 3.00 Bathroom, 2,908 sqft

Residential on 0 Acres

N/A, San Bernardino,

Welcome to this charming property, boasting a warm fireplace and a fresh interior paint job in a neutral color scheme. The kitchen is a chef's dream with all stainless steel appliances, a kitchen island for extra prep space, and an accent backsplash. The primary bathroom offers a separate tub and shower for ultimate relaxation. Recent updates include partial flooring replacement. The exterior offers a covered patio perfect for outdoor entertaining and a fenced in backyard for privacy. Owned solar panels too. This property is truly a must-see.



Built in 1953

Essential Information

| | |
|----------------|-------------------------|
| MLS® # | IV24231658 |
| Price | \$693,000 |
| Bedrooms | 3 |
| Bathrooms | 3.00 |
| Full Baths | 3 |
| Square Footage | 2,908 |
| Acres | 0.26 |
| Year Built | 1953 |
| Type | Residential |
| Sub-Type | Single Family Residence |
| Status | Closed |
| Listing Agent | Melissa Westfall |
| Listing Office | OPENDOOR BROKERAGE INC. |

Community Information

| | |
|-------------|----------------------|
| Address | 3520 Parkside Drive |
| Area | 274 - San Bernardino |
| Subdivision | N/A |
| City | San Bernardino |
| County | San Bernardino |
| Zip Code | 92404 |

Amenities

| | |
|----------------|--------|
| Parking Spaces | 2 |
| Parking | Garage |
| # of Garages | 2 |
| Garages | Garage |
| View | None |
| Pool | None |

Exterior

| | |
|-----------------|--------------------|
| Exterior | Wood Siding, Brick |
| Lot Description | Desert Front |
| Roof | Asphalt, Shingle |
| Construction | Wood Siding, Brick |

Interior

| | |
|-------------------|---|
| Interior Features | Granite Counters, Bedroom on Main Level, Main Level Primary |
| Appliances | Dishwasher, Microwave |
| Heating | Central, Natural Gas |
| Cooling | Central Air, Electric |
| Fireplace | Yes |
| Fireplaces | Wood Burning |
| # of Stories | 1 |
| Stories | One |

School Information

| | |
|------------|-----------------------------|
| District | San Bernardino City Unified |
| Elementary | Parkside |
| Middle | Golden Valley |
| High | Pacific |

Additional Information

| | |
|-----------------|---------------------|
| Date Listed | November 11th, 2024 |
| Days on Market | 93 |
| Short Sale | N |
| RE / Bank Owned | N |

Based on information from California Regional Multiple Listing Service, Inc. as of December 27th, 2025 at 8:45am PST. This information is for your personal, non-commercial use and may not be used for any purpose other than to identify prospective properties you may be interested in purchasing. Display of MLS data is usually deemed reliable but is NOT guaranteed accurate by the MLS. Buyers are responsible for verifying the accuracy of all information and should investigate the data themselves or retain appropriate professionals. Information from sources other than the Listing Agent may have been included in the MLS data. Unless otherwise specified in writing, Broker/Agent has not and will not verify any information obtained from other sources. The Broker/Agent providing the information contained herein may or may not have been the Listing and/or Selling Agent.