

\$299,999 - 889 Strawberry Peak, Twin Peaks

MLS® #IG26039497

\$299,999

4 Bedroom, 2.00 Bathroom, 1,632 sqft
Residential on 0 Acres

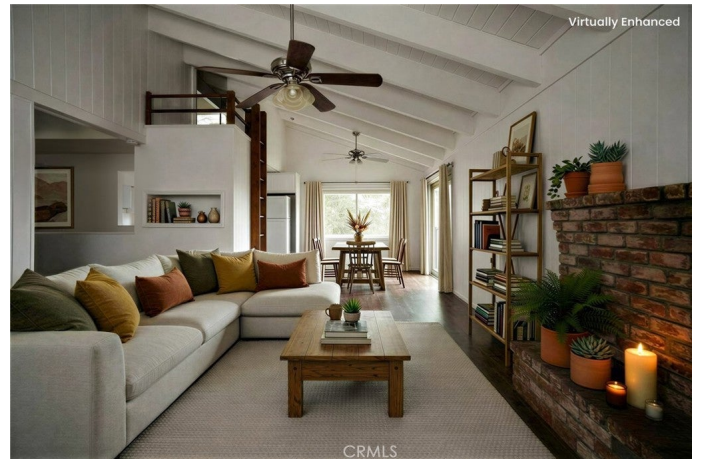
Twin Peaks (TWIN), Twin Peaks,

Charming Twin Peaks Retreat with Loft, Forest Views, and Multiple Living Spaces! Nestled at the end of a quiet, desirable cul-de-sac in Twin Peaks, this 3-bedroom, 2-bathroom home offers the perfect blend of mountain serenity and accessibility. With only 8 steps down to the front door, the home welcomes you into a bright and airy main level featuring cathedral-beamed ceilings, engineered wood floors, and a cozy brick fireplace with a wood stove insert. The dining and kitchen areas flow seamlessly to a Trex deck, perfect for enjoying peaceful forest views.

Two main-level bedrooms share a full bathroom, each enhanced by vaulted, open-beamed ceilings. A kidâ€™s loft with a built-in desk and storage closet adds flexible space for study or play.

The lower level features a spacious master bedroom with slider access to a brand-new Trex deck overlooking the forest, a full bathroom, and ample storage and laundry areas. Upgrades include vinyl dual pane windows, and new concrete foundation reinforcement, ensuring peace of mind New upgrades total \$15,000.

The ground-level room with a separate entry can serve as a home office, guest bedroom, gym, or craft roomâ€”whatever your lifestyle requires.



With plenty of parking and just minutes from Highway 189, this home offers easy commuting while immersing you in the tranquility of the mountains. Don't miss the opportunity to make this versatile Twin Peaks retreat your own!

Built in 1965

Essential Information

MLS® #	IG26039497
Price	\$299,999
Bedrooms	4
Bathrooms	2.00
Full Baths	2
Square Footage	1,632
Acres	0.22
Year Built	1965
Type	Residential
Sub-Type	Single Family Residence
Status	Closed
Listing Agent	Johnny Whieldon
Listing Office	RE/MAX LAKESIDE

Community Information

Address	889 Strawberry Peak
Area	287 - Arrowhead Area
Subdivision	Twin Peaks (TWIN)
City	Twin Peaks
County	San Bernardino
Zip Code	92391

Amenities

Utilities	Electricity Connected, Natural Gas Connected, Sewer Connected, Water Connected
Parking Spaces	3
Parking	None
Garages	None
View	Trees/Woods

Pool None

Exterior

Lot Description Cul-De-Sac

Roof Composition

Interior

Interior Features Separate/Formal Dining Room, Cathedral Ceiling(s), Ceiling Fan(s)

Appliances Double Oven, Dishwasher, Gas Cooktop, Gas Oven, Gas Range

Heating Central

Cooling None

Fireplace Yes

Fireplaces Living Room

of Stories 4

Stories Three Or More

School Information

District Rim of the World

Additional Information

Date Listed February 23rd, 2026

Days on Market 12

Short Sale N

RE / Bank Owned N

Based on information from California Regional Multiple Listing Service, Inc. as of April 24th, 2026 at 11:55am PDT. This information is for your personal, non-commercial use and may not be used for any purpose other than to identify prospective properties you may be interested in purchasing. Display of MLS data is usually deemed reliable but is NOT guaranteed accurate by the MLS. Buyers are responsible for verifying the accuracy of all information and should investigate the data themselves or retain appropriate professionals. Information from sources other than the Listing Agent may have been included in the MLS data. Unless otherwise specified in writing, Broker/Agent has not and will not verify any information obtained from other sources. The Broker/Agent providing the information contained herein may or may not have been the Listing and/or Selling Agent.