

\$56,000 - Las Tunas Drive, Apple Valley

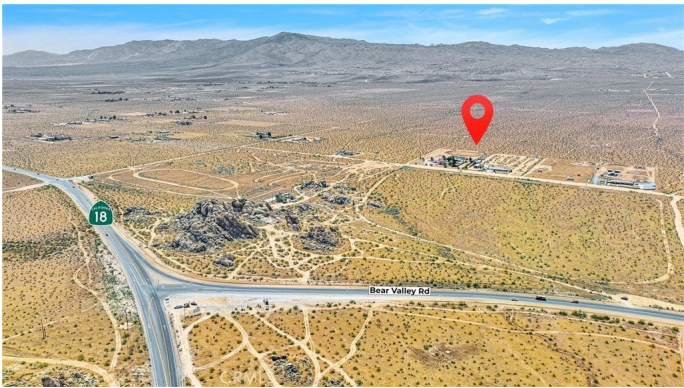
MLS® #DW24100539

\$56,000

0 Bedroom, 0.00 Bathroom,
Land on 5 Acres

N/A, Apple Valley,

Price adjustment! 5-ACRES of Gorgeous Residential and Horse Property Zoned Land. Zoned for up to 5 Units. Clean, Leveled and Vacant with Beautiful 360-degree Mountain views! Located off an exclusive road, near many up-and-coming properties already being built by properties personal owners. This location is rapidly growing into a great community. GPS coordinates: Latitude 34.467 Longitude -117.126



Essential Information

MLS® #	DW24100539
Price	\$56,000
Bathrooms	0.00
Acres	5.00
Type	Land
Status	Closed
Listing Agent	Evelyn Calas
Listing Office	Berkshire Hathaway Home Services California Properties

Community Information

Address	Las Tunas Drive
Area	APPV - Apple Valley
Subdivision	N/A
City	Apple Valley
County	San Bernardino
Zip Code	92308

Amenities

View	Mountain(s), Panoramic
Exterior	
Lot Description	Level, Rectangular Lot, TwoToFiveUnitsAcre

Additional Information

Date Listed	May 17th, 2024
Days on Market	402
Zoning	RL-5
Short Sale	N
RE / Bank Owned	N

Based on information from California Regional Multiple Listing Service, Inc. as of February 8th, 2026 at 4:55pm PST. This information is for your personal, non-commercial use and may not be used for any purpose other than to identify prospective properties you may be interested in purchasing. Display of MLS data is usually deemed reliable but is NOT guaranteed accurate by the MLS. Buyers are responsible for verifying the accuracy of all information and should investigate the data themselves or retain appropriate professionals. Information from sources other than the Listing Agent may have been included in the MLS data. Unless otherwise specified in writing, Broker/Agent has not and will not verify any information obtained from other sources. The Broker/Agent providing the information contained herein may or may not have been the Listing and/or Selling Agent.