

\$2,049,000 - 2424 Cliff Road, Upland

MLS® #CV25055060

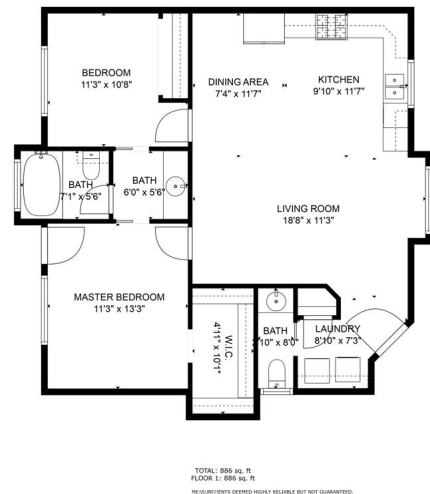
\$2,049,000

4 Bedroom, 5.00 Bathroom, 4,430 sqft

Residential on 1 Acres

N/A, Upland,

Exclusive San Antonio Heights single level estate with guest home, on nearly an acre of landscaped grounds, with enough owned solar to support the entire property. The grand circular cobblestone driveway leads to elegant double leaded glass entry doors going through to the formal foyer, making a distinctive first impression. The beautiful main residence shows light and spacious, with a neutral color pallet throughout. Soft toned paint and carpeting are complemented by the sophisticated wood grain, planked tile flooring. The oversize formal living and adjacent dining room are accentuated by large picture windows overlooking the lushly landscaped grounds. The dream kitchen is fit for a chief, with stainless steel appliances including Thermador double ovens and cook top with filtered water pot filler, instant hot water throughout, coffee and wine bars that include built in refrigerator and ice maker for entertaining ease, plus oversized center island with prep sink, pull up bar seating, and built in microwave. Vast granite countertops and room-sized walk-in pantry complete this amazing space. The adjacent family room is of grand scale with impressive vaulted beam ceilings, massive wall to wall stone fireplace with hearth seating and quaint conversation cove. There are 4 oversized bedrooms and 4 ½ baths, including 2 fabulous primaries boasting sumptuous en suites at opposite wings of the home. Stone countertops, large soaking tubs, spa-like showers and king sized



walk-in closets are just the beginning. Covered patio nearly spanning length of home with cooling misters opens to the rolling lawns with mature plants and foliage, thatâ€™s tucked between the nearly 1,000 sq foot 2 bedroom, 2 bath second home, and a winding drive tucked behind double gates connecting these structures with a large parking barn suitable for multiple cars and workshop. There are build-able pads left for additional structures. The Gated RV parking with hookups, garage EV charger, tank less water heaters at both ends of house, Kohler digital shower/tub selection, split HVAC units and bedroom zoning system, under eave timers for electrical plugs, iron secure pet pen, pull down ladder for accessible attic storage, convenient proximity to the 210 freeway and Colonies shops and dinning, plus award winning Upland schools makes this the ideal place to call home.

Built in 1978

Essential Information

MLS® #	CV25055060
Price	\$2,049,000
Bedrooms	4
Bathrooms	5.00
Full Baths	4
Half Baths	1
Square Footage	4,430
Acres	0.96
Year Built	1978
Type	Residential
Sub-Type	Single Family Residence
Status	Closed
Listing Agent	Gina Moga
Listing Office	REALTY ONE GROUP WEST

Community Information

Address	2424 Cliff Road
Area	690 - Upland
Subdivision	N/A
City	Upland
County	San Bernardino
Zip Code	91784

Amenities

Utilities	Sewer Connected
Parking Spaces	2
Parking	Door-Multi, Driveway, Garage, RV Access/Parking, Circular Driveway, Garage Faces Front, RV Gated, RV Hook-Ups
# of Garages	2
Garages	Door-Multi, Driveway, Garage, RV Access/Parking, Circular Driveway, Garage Faces Front, RV Gated, RV Hook-Ups
View	City Lights, Mountain(s), Valley
Pool	None

Exterior

Exterior Features	Misting System
Lot Description	Back Yard, Front Yard, Lawn, Gentle Sloping, Landscaped, Rectangular Lot, Sprinklers In Front, Sprinklers In Rear, Sprinkler System, Street Level
Windows	Blinds, Double Pane Windows
Roof	Tile

Interior

Interior	Carpet, Tile
Interior Features	Wet Bar, Ceiling Fan(s), Separate/Formal Dining Room, All Bedrooms Down, Bedroom on Main Level, Walk-In Closet(s), Beamed Ceilings, Breakfast Bar, Granite Counters, High Ceilings, In-Law Floorplan, Instant Hot Water, Main Level Primary, Open Floorplan, Pull Down Attic Stairs, Recessed Lighting, Stone Counters, Storage, Walk-In Pantry
Appliances	Dishwasher, Gas Cooktop, Disposal, Microwave, Double Oven, Ice Maker
Heating	Central
Cooling	Central Air
Fireplace	Yes
Fireplaces	Family Room
# of Stories	1
Stories	One

School Information

District	Upland
Middle	Pioneer
High	Upland

Additional Information

Date Listed	March 14th, 2025
Days on Market	5
Zoning	RS-14M
Short Sale	N
RE / Bank Owned	N

Based on information from California Regional Multiple Listing Service, Inc. as of January 14th, 2026 at 6:50pm PST. This information is for your personal, non-commercial use and may not be used for any purpose other than to identify prospective properties you may be interested in purchasing. Display of MLS data is usually deemed reliable but is NOT guaranteed accurate by the MLS. Buyers are responsible for verifying the accuracy of all information and should investigate the data themselves or retain appropriate professionals. Information from sources other than the Listing Agent may have been included in the MLS data. Unless otherwise specified in writing, Broker/Agent has not and will not verify any information obtained from other sources. The Broker/Agent providing the information contained herein may or may not have been the Listing and/or Selling Agent.