

\$3,700 - 7024 Sweetleaf Drive, Fontana

MLS® #CV25021222

\$3,700

4 Bedroom, 3.00 Bathroom, 2,483 sqft

Residential Lease on 0 Acres

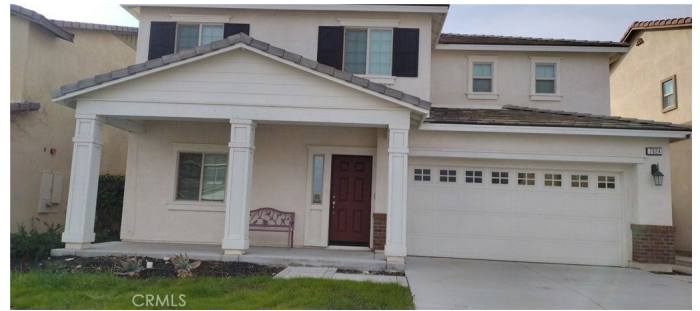
N/A, Fontana,

Welcome to this beautifully updated two-story home in the highly desirable Bella Strada Community in North Fontana – the perfect place to call home! With fresh paint, new carpet, white cabinetry, and elegant gray granite countertops throughout, this home offers a modern and inviting atmosphere that’s both stylish and comfortable.

The open-concept layout features a spacious kitchen with energy-efficient, top-tier stainless steel appliances, including a dishwasher, gas range, and built-in microwave, all beautifully complemented by stunning granite countertops. With 4 bedrooms and 3 full bathrooms, there’s ample space for you and your family to relax, work, and play. One bedroom and bathroom are conveniently located downstairs, perfect for guests or multi-generational living.

Upstairs, you’ll find a large loft that can easily be transformed into a home office, playroom, or entertainment area—providing plenty of flexibility to fit your lifestyle. The master suite is a true retreat, offering a spacious sitting area, two walk-in closets, and a private en-suite bathroom for ultimate comfort and privacy.

Additional highlights include an indoor laundry room, a two-car attached garage, and plenty of storage throughout the home. Best of all, you’ll be just steps away from the



community pool, park, and centerâ€”perfect for enjoying outdoor fun, making memories, and meeting new friends.

This home offers the perfect blend of style, convenience, and comfort, making it the ideal place to create lasting memories. And the best part? Itâ€™s available for immediate occupancy, so you can move in and start enjoying all it has to offer right away. Donâ€™t miss out on the opportunity to make this beautifully updated home yours. Schedule a tour today and discover why this is the perfect place to call home!

Built in 2017

Essential Information

MLS® #	CV25021222
Price	\$3,700
Bedrooms	4
Bathrooms	3.00
Full Baths	3
Square Footage	2,483
Acres	0.09
Year Built	2017
Type	Residential Lease
Sub-Type	Single Family Residence
Status	Closed
Listing Agent	Loida Atienza
Listing Office	L.A. Realty Services

Community Information

Address	7024 Sweetleaf Drive
Area	264 - Fontana
Subdivision	N/A
City	Fontana
County	San Bernardino
Zip Code	92336

Amenities

Utilities	None
Parking Spaces	2
# of Garages	2
View	None
Has Pool	Yes
Pool	Association

Exterior

Lot Description	ZeroToOneUnitAcre
-----------------	-------------------

Interior

Interior Features	Bedroom on Main Level, Breakfast Bar, Walk-In Pantry
Heating	Central
Cooling	Central Air, Dual, Gas
Fireplace	Yes
Fireplaces	Dining Room, Family Room, Kitchen
# of Stories	2
Stories	Two

School Information

District	Fontana Unified
----------	-----------------

Additional Information

Date Listed	January 29th, 2025
Days on Market	15
Short Sale	N
RE / Bank Owned	N

Based on information from California Regional Multiple Listing Service, Inc. as of January 27th, 2026 at 11:21pm PST. This information is for your personal, non-commercial use and may not be used for any purpose other than to identify prospective properties you may be interested in purchasing. Display of MLS data is usually deemed reliable but is NOT guaranteed accurate by the MLS. Buyers are responsible for verifying the accuracy of all information and should investigate the data themselves or retain appropriate professionals. Information from sources other than the Listing Agent may have been included in the MLS data. Unless otherwise specified in writing, Broker/Agent has not and will not verify any information obtained from other sources. The Broker/Agent providing the information contained herein may or may not have been the Listing and/or Selling Agent.