

# \$79,000 - 33rd St. E And Ave. S-12, Palmdale

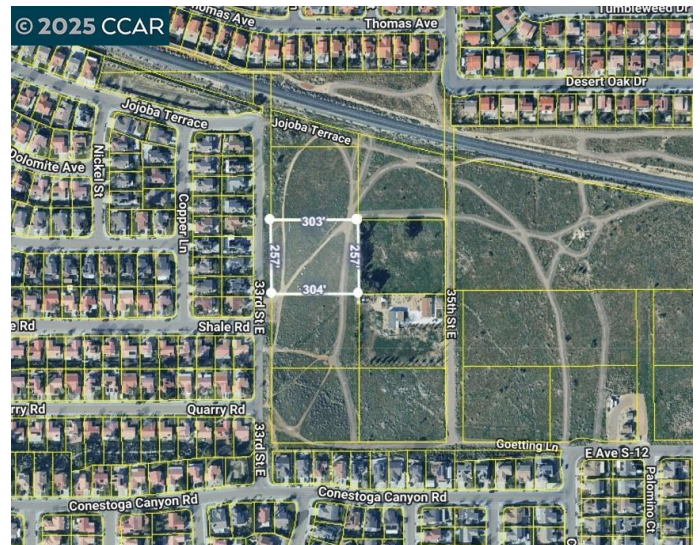
MLS® #41119639

**\$79,000**

0 Bedroom, 0.00 Bathroom,  
Land on 2 Acres

None, Palmdale,

Excellent location in Palmdale just four miles from Highway 14, south of Avenue S and just north of Pearblossom Highway. Is perfect for building your dream home or for a potential subdivision. Well established neighborhood with existing homes directly across the street. Zoning for this 1.79 acre parcel - APN# 3052-011-015 - allows for single family homes on 7,000 square foot lots and ADU (Accessory Dwelling Unit) may be possible according to the Palmdale city's website. Parcel fronts on paved 33rd street east and utilities appear to be available in the area. This Location is in very close proximity to major shopping center, schools, parks, Kaiser medical facilities and the DryTown Water Park on Avenue S. All data is provided without verification or warranty. Buyer to verify all data and suitability for Buyer's intended use. (Longitude/Latitude: 34.548160°/-118.068958°).



## Essential Information

MLS® #	41119639
Price	\$79,000
Bathrooms	0.00
Acres	1.79
Type	Land
Status	Closed
Listing Agent	Sam Tooloee
Listing Office	Sunriser Landcore Investments

## Community Information

Address	33rd St. E And Ave. S-12
Subdivision	None
City	Palmdale
County	Los Angeles
Zip Code	93550

## Exterior

Lot Description	Street Level
-----------------	--------------

## Additional Information

Date Listed	December 27th, 2025
Days on Market	9
Zoning	SFR3
Short Sale	N
RE / Bank Owned	N

Based on information from California Regional Multiple Listing Service, Inc. as of February 6th, 2026 at 10:37am PST. This information is for your personal, non-commercial use and may not be used for any purpose other than to identify prospective properties you may be interested in purchasing. Display of MLS data is usually deemed reliable but is NOT guaranteed accurate by the MLS. Buyers are responsible for verifying the accuracy of all information and should investigate the data themselves or retain appropriate professionals. Information from sources other than the Listing Agent may have been included in the MLS data. Unless otherwise specified in writing, Broker/Agent has not and will not verify any information obtained from other sources. The Broker/Agent providing the information contained herein may or may not have been the Listing and/or Selling Agent.