

# \$650,000 - 1256 Skycrest Dr # 6, Walnut Creek

MLS® #41110688

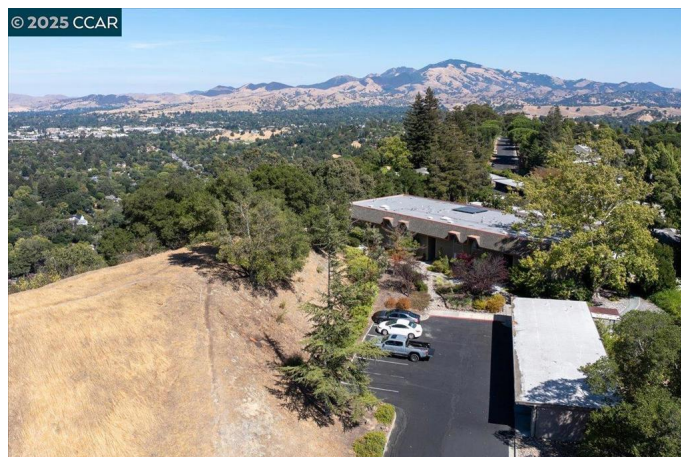
---

## \$650,000

3 Bedroom, 3.00 Bathroom, 1,739 sqft  
Residential on 0 Acres

ROSSMOOR, Walnut Creek,

Discover the perfect blend of casual comfort and contemporary style in this spacious, private Piedmont retreat, a tucked-away townhouse on a peaceful Skycrest knoll in Rossmoor's premier 55+ community. With level-in access just steps from the carport, this end-unit, 3-bedroom, 2.5-bath co-op offers effortless living and sweeping views of iconic Mt. Diablo. Inside, you'll find a freshly painted interior, updated kitchen and baths, a mix of hard-surface flooring and brand-new carpet, plus an expansive covered patio with extra living space and a large storage closet, all surrounded by serene views. Highlights you'll love include an oversized primary suite with long-range views, two full baths upstairs plus a convenient en-suite half-bath on the main level, a full-size stacked washer/dryer, built-in microwave, and generous closet space on the over-sized patio. A close carport and ample guest parking complete the picture. Spacious, private, and move-in ready—this is the perfect place to relax, entertain, and embrace the Rossmoor lifestyle. Welcome home!



Built in 1969

## Essential Information

MLS® #	41110688
Price	\$650,000
Bedrooms	3

Bathrooms	3.00
Full Baths	2
Half Baths	1
Square Footage	1,739
Acres	0.00
Year Built	1969
Type	Residential
Sub-Type	Condominium
Style	Contemporary
Status	Closed
Listing Agent	Maria Eberle
Listing Office	BHHS Drysdale Properties

### Community Information

Address	1256 Skycrest Dr # 6
Subdivision	ROSSMOOR
City	Walnut Creek
County	Contra Costa
Zip Code	94595

### Amenities

Amenities	Clubhouse, Fitness Center, Golf Course, Maintenance Grounds, Insurance, Other, Pool, Spa/Hot Tub, Security, Tennis Court(s), Trash, Cable TV, Water
Parking Spaces	1
Parking	Carport, Guest
Garages	Carport, Guest
View	Mountain(s)
Has Pool	Yes
Pool	Association

### Exterior

Exterior	Stucco
Lot Description	Corner Lot, Street Level
Construction	Stucco

### Interior

Interior	Carpet, Vinyl
Appliances	Dryer, Washer
Heating	Electric, Heat Pump, Radiant

Cooling	Wall/Window Unit(s)
Fireplaces	None
Stories	Two

### **Additional Information**

Date Listed	September 6th, 2025
Days on Market	4
Short Sale	N
RE / Bank Owned	N

Based on information from California Regional Multiple Listing Service, Inc. as of January 28th, 2026 at 4:51pm PST. This information is for your personal, non-commercial use and may not be used for any purpose other than to identify prospective properties you may be interested in purchasing. Display of MLS data is usually deemed reliable but is NOT guaranteed accurate by the MLS. Buyers are responsible for verifying the accuracy of all information and should investigate the data themselves or retain appropriate professionals. Information from sources other than the Listing Agent may have been included in the MLS data. Unless otherwise specified in writing, Broker/Agent has not and will not verify any information obtained from other sources. The Broker/Agent providing the information contained herein may or may not have been the Listing and/or Selling Agent.