

\$2,398,000 - 1410 Pacific Avenue, Venice

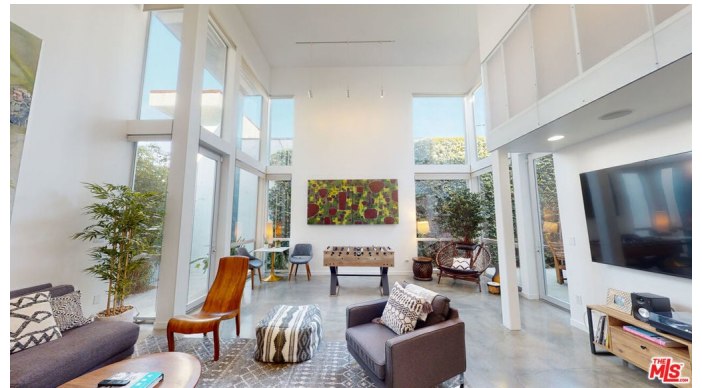
MLS® #26644535

\$2,398,000

5 Bedroom, 2.00 Bathroom, 2,380 sqft
Residential on 0 Acres

N/A, Venice,

Set in the heart of Venice just one block from the beach, this architectural art loft captures the neighborhood's creative spirit offering the flexibility to live, work, and create on your own terms. A rare, adaptable lot with versatile zoning unlocks exceptional potential for a traditional residence, inspiring creative office, true live/work environment, or even a service-based business with storefront possibilities. Flooded with natural light, the open ground level features soaring ceilings, polished concrete floors, and a full bathroom ideal for studio, gallery, workspace, or guest use. Upstairs, the home unfolds across multiple levels with private balconies, oversized dual-pane windows, and an airy, open flow throughout. The main living level showcases a generous living room, balcony, powder room, and a gourmet kitchen outfitted with top-of-the-line appliances. A mezzanine on the next level overlooks the entryway, adding architectural interest and flexible use. Currently configured as five bedrooms, the layout also offers the option to restore the original design concept of a single expansive primary suite. The top floor retreat enjoys city lights and mountain views, plus a spacious bedroom with a walk-in closet. Gated, private, and secure with a two-car garage and additional driveway parking (plus a security system), this one-of-a-kind Venice offering is ready to bring your vision to life, whether home, workspace, or the perfect blend of both.



Built in 2004

Essential Information

| | |
|----------------|-------------------------|
| MLS® # | 26644535 |
| Price | \$2,398,000 |
| Bedrooms | 5 |
| Bathrooms | 2.00 |
| Full Baths | 2 |
| Square Footage | 2,380 |
| Acres | 0.06 |
| Year Built | 2004 |
| Type | Residential |
| Sub-Type | Single Family Residence |
| Status | Closed |
| Listing Agent | Alex Baker |
| Listing Office | Pardee Properties |

Community Information

| | |
|-------------|---------------------|
| Address | 1410 Pacific Avenue |
| Area | C11 - Venice |
| Subdivision | N/A |
| City | Venice |
| County | Los Angeles |
| Zip Code | 90291 |

Amenities

| | |
|---------|--------------------------|
| Parking | Door-Multi, Garage |
| Garages | Door-Multi, Garage |
| View | Mountain(s), City Lights |
| Pool | None |

Interior

| | |
|------------|--|
| Interior | Wood |
| Appliances | Dishwasher, Microwave, Refrigerator, Dryer |
| Heating | Central |
| Cooling | Central Air |
| Fireplaces | None |
| Stories | Multi/Split |

Additional Information

| | |
|-----------------|--------------------|
| Date Listed | January 29th, 2026 |
| Days on Market | 32 |
| Zoning | LAC4 |
| Short Sale | N |
| RE / Bank Owned | N |

Based on information from California Regional Multiple Listing Service, Inc. as of April 16th, 2026 at 5:11am PDT. This information is for your personal, non-commercial use and may not be used for any purpose other than to identify prospective properties you may be interested in purchasing. Display of MLS data is usually deemed reliable but is NOT guaranteed accurate by the MLS. Buyers are responsible for verifying the accuracy of all information and should investigate the data themselves or retain appropriate professionals. Information from sources other than the Listing Agent may have been included in the MLS data. Unless otherwise specified in writing, Broker/Agent has not and will not verify any information obtained from other sources. The Broker/Agent providing the information contained herein may or may not have been the Listing and/or Selling Agent.