

# \$1,549,900 - 1404 Thomas Ave, San Diego

MLS® #260003272SD

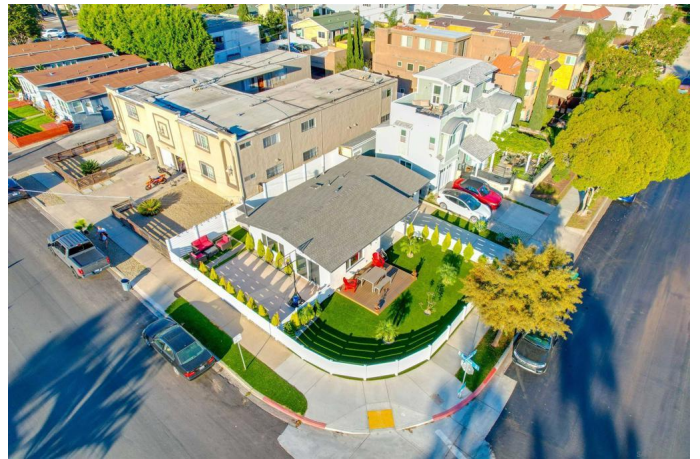
---

## \$1,549,900

2 Bedroom, 2.00 Bathroom, 908 sqft  
Residential on 0 Acres

Pacific Beach, San Diego,

Discover coastal living at its finest just minutes from the sand! Located on a premier CORNER LOT in the heart of Pacific Beach, this tastefully updated single-family residence offers peek-a-boo ocean views from the street and an unbeatable coastal lifestyle with the bay, beach, restaurants, shopping, and grocery stores all within walking distance. Remodeled extensively in 2024, this 2-bedroom, 2-bath home features vaulted ceilings and dual primary suites, creating a bright and airy living space. The renovated kitchen showcases quartz countertops and backsplash, new cabinetry, and stainless steel appliances, while both bathrooms have been upgraded with modern tile, stylish vanities, and glass shower enclosures. New flooring, windows, doors, lighting, and designer paint complete the interior refresh. Outside, enjoy a private, low-maintenance yard designed for entertaining with new artificial turf, Trex deck, concrete patio, pavers, vinyl fencing, and fresh landscaping. Major system upgrades include a new furnace with Nest, tankless water heater, full sewer line replacement, new roof, plumbing improvements, and more—offering true move-in peace of mind. Zoned R-3, the property offers future potential to add additional units with possible ocean views. (ADU plans ready for submission to the city available upon request) With great curb appeal, 2+ parking spaces, and proximity to everything PB has to offer, this is a rare opportunity to own a highly upgraded home



this close to the beach. This home WON'T  
LAST LONG!

Built in 1952

### **Essential Information**

MLS® #	260003272SD
Price	\$1,549,900
Bedrooms	2
Bathrooms	2.00
Full Baths	2
Square Footage	908
Acres	0.06
Year Built	1952
Type	Residential
Sub-Type	Single Family Residence
Status	Closed
Listing Agent	Aaron Escobedo
Listing Office	Compass

### **Community Information**

Address	1404 Thomas Ave
Area	92109 - Pacific Beach
Subdivision	Pacific Beach
City	San Diego
County	San Diego
Zip Code	92109

### **Amenities**

Parking Spaces	2
Parking	Driveway, Gated
Garages	Driveway, Gated
Pool	None
Security	Carbon Monoxide Detector(s), Smoke Detector(s)

### **Exterior**

Exterior	Stucco
Lot Description	Corner Lot
Roof	Shingle

Construction           Stucco

## **Interior**

Interior                   Laminate

Interior Features       Ceiling Fan(s), Open Floorplan, Bedroom on Main Level, Built-in Features, Recessed Lighting

Appliances              Dishwasher, Gas Cooktop, Disposal, Microwave, Refrigerator, Tankless Water Heater

Heating                  Forced Air, Natural Gas

Cooling                  Central Air

# of Stories             1

Stories                   One

## **Additional Information**

Date Listed              February 11th, 2026

Days on Market         10

Zoning                   R-3

Short Sale               N

RE / Bank Owned       N

Based on information from California Regional Multiple Listing Service, Inc. as of April 15th, 2026 at 10:55am PDT. This information is for your personal, non-commercial use and may not be used for any purpose other than to identify prospective properties you may be interested in purchasing. Display of MLS data is usually deemed reliable but is NOT guaranteed accurate by the MLS. Buyers are responsible for verifying the accuracy of all information and should investigate the data themselves or retain appropriate professionals. Information from sources other than the Listing Agent may have been included in the MLS data. Unless otherwise specified in writing, Broker/Agent has not and will not verify any information obtained from other sources. The Broker/Agent providing the information contained herein may or may not have been the Listing and/or Selling Agent.