

\$3,190 - 1650 Sawtelle Boulevard # 405, Los Angeles

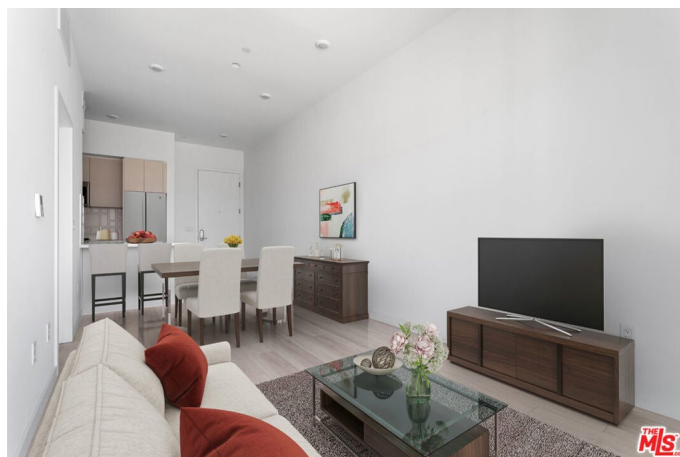
MLS® #25611661

\$3,190

1 Bedroom, 1.00 Bathroom,
Residential Lease on 0 Acres

N/A, Los Angeles,

1650 SAWTELLE, a new building by Nayssan Properties, completed in 2021! Live at this bold and contemporary building consisting of a VERY Large 1BDR-1Bath unit in an amazing location with great views. GREAT FLOORPLAN! 1 Parking space included! The apartment has a spacious open floorplans with very high ceilings and extra-large private balconies. Large bedroom with plenty of closet space. The unit is equipped with brand-new, stainless steel appliances, in unit washer & dryer, luxury countertops and custom tile and wood flooring made in Europe. On site manager with secure mailroom. 2 elevators for convenience! Step out of your apartment and onto Sawtelle Blvd, one of the liveliest streets in West LA with the best restaurants, cafes and shops in the area! Huge furnished rooftop deck where tenants can relax and enjoy the sunset with 360-degree views of the city, mountains and Pacific Ocean! SEE REMARKS FOR SHOWING INSTRUCTIONS.



Built in 2021

Essential Information

MLS® #	25611661
Price	\$3,190
Bedrooms	1
Bathrooms	1.00
Full Baths	1
Acres	0.29

Year Built	2021
Type	Residential Lease
Sub-Type	Condominium
Style	Modern
Status	Closed
Listing Agent	Jasmine Lawi
Listing Office	Jasmine Lawi, Broker

Community Information

Address	1650 Sawtelle Boulevard # 405
Area	WLA - West Los Angeles
Subdivision	N/A
City	Los Angeles
County	Los Angeles
Zip Code	90025

Amenities

Amenities	Controlled Access
Parking Spaces	1
Parking	Assigned, Controlled Entrance, Covered, Garage, Gated, Private
Garages	Assigned, Controlled Entrance, Covered, Garage, Gated, Private
View	City Lights, Mountain(s)
Pool	None
Security	Carbon Monoxide Detector(s), Fire Detection System, Firewall(s), Fire Rated Drywall, Fire Sprinkler System, Key Card Entry, Smoke Detector(s), Gated Community, Resident Manager

Exterior

Windows	Custom Covering(s), Double Pane Windows
---------	---

Interior

Interior	Laminate
Interior Features	Balcony, Open Floorplan, Elevator
Appliances	Dishwasher, Disposal, Microwave, Range, Refrigerator, Dryer, Washer, Oven
Heating	Electric
Fireplaces	None
# of Stories	5
Stories	One

Additional Information

Date Listed	October 28th, 2025
Days on Market	7
Zoning	LAC2
Short Sale	N
RE / Bank Owned	N

Based on information from California Regional Multiple Listing Service, Inc. as of April 24th, 2026 at 3:01pm PDT. This information is for your personal, non-commercial use and may not be used for any purpose other than to identify prospective properties you may be interested in purchasing. Display of MLS data is usually deemed reliable but is NOT guaranteed accurate by the MLS. Buyers are responsible for verifying the accuracy of all information and should investigate the data themselves or retain appropriate professionals. Information from sources other than the Listing Agent may have been included in the MLS data. Unless otherwise specified in writing, Broker/Agent has not and will not verify any information obtained from other sources. The Broker/Agent providing the information contained herein may or may not have been the Listing and/or Selling Agent.