

\$2,550 - 3528 Ellsworth # 3528, Los Angeles

MLS® #25594637

\$2,550

1 Bedroom, 1.00 Bathroom, 507 sqft

Residential Lease on 0 Acres

N/A, Los Angeles,

Essential Information

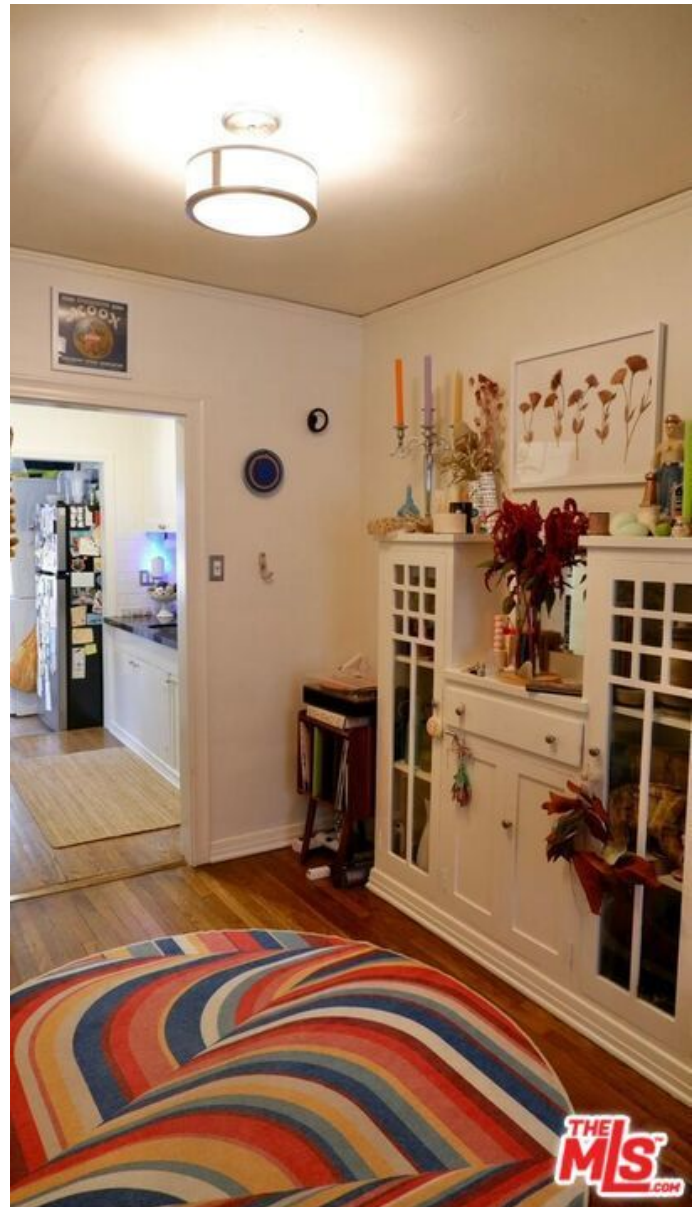
MLS® #	25594637
Price	\$2,550
Bedrooms	1
Bathrooms	1.00
Full Baths	1
Square Footage	507
Acres	0.18
Type	Residential Lease
Sub-Type	Condominium
Style	Spanish
Status	Closed
Listing Agent	Marc Castleman
Listing Office	SCSH Management Inc.

Community Information

Address	3528 Ellsworth # 3528
Area	C21 - Silver Lake - Echo Park
Subdivision	N/A
City	Los Angeles
County	Los Angeles
Zip Code	90026

Amenities

Parking Spaces	1
View	City Lights



Pool	None
------	------

Interior

Interior	Wood
Interior Features	Ceiling Fan(s)
Appliances	Dishwasher, Microwave, Refrigerator, Dryer, Washer
Heating	Central
Cooling	Central Air
Fireplaces	None
# of Stories	1
Stories	One

Additional Information

Date Listed	September 21st, 2025
Days on Market	16
Short Sale	N
RE / Bank Owned	N

Based on information from California Regional Multiple Listing Service, Inc. as of December 16th, 2025 at 4:40pm PST. This information is for your personal, non-commercial use and may not be used for any purpose other than to identify prospective properties you may be interested in purchasing. Display of MLS data is usually deemed reliable but is NOT guaranteed accurate by the MLS. Buyers are responsible for verifying the accuracy of all information and should investigate the data themselves or retain appropriate professionals. Information from sources other than the Listing Agent may have been included in the MLS data. Unless otherwise specified in writing, Broker/Agent has not and will not verify any information obtained from other sources. The Broker/Agent providing the information contained herein may or may not have been the Listing and/or Selling Agent.