

\$2,700,000 - 500 Swarthmore Avenue, Pacific Palisades

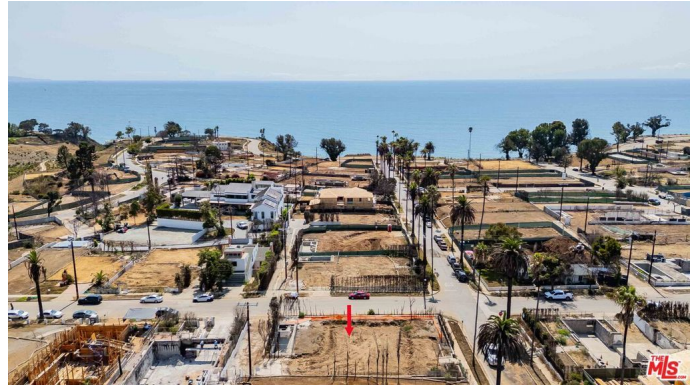
MLS® #25590305

\$2,700,000

0 Bedroom, 0.00 Bathroom,
Land on 0 Acres

N/A, Pacific Palisades,

500 Swarthmore Avenue is the lot you've been waiting for: a prime location, an elevated corner setting, and a generous size. This oversized 8,330 sq ft parcel sits just a few blocks from the heart of Palisades Village in the highly desirable Via Bluffs. Only a few lots from the bluffs, where sunsets are spectacular, the property also includes a unique rear driveway, allowing for a wide variety of home designs. The previous Cape Cod-style home, custom-built in 2017, was 5,090 sq ft on two levels and offered ocean views from the second floor, providing a sense of the scale that can be achieved here. The property also qualifies for the "fast track, like-for-like" 110% rebuild program, allowing for expedited permitting of a 5,599-square-foot home. This is a rare opportunity to build your dream residence close to Palisades Village, top schools, parks, hiking trails, and the beach. Set on one of the most coveted streets in the neighborhood, Swarthmore combines small-town charm with vibrant coastal living. Whether you envision a sleek contemporary retreat or a timeless estate, this expansive lot is a blank canvas for your vision. With world-class dining, shopping, recreation, and the Pacific Ocean just minutes away, opportunities like this don't come along often.



Essential Information

MLS® # 25590305

Price	\$2,700,000
Bathrooms	0.00
Acres	0.19
Type	Land
Status	Closed
Listing Agent	Anthony Marguleas
Listing Office	Amalfi Estates

Community Information

Address	500 Swarthmore Avenue
Area	C15 - Pacific Palisades
Subdivision	N/A
City	Pacific Palisades
County	Los Angeles
Zip Code	90272

Amenities

View	Peek-A-Boo
------	------------

Additional Information

Date Listed	September 11th, 2025
Days on Market	26
Zoning	LAR1
Short Sale	N
RE / Bank Owned	N

Based on information from California Regional Multiple Listing Service, Inc. as of January 30th, 2026 at 2:10am PST. This information is for your personal, non-commercial use and may not be used for any purpose other than to identify prospective properties you may be interested in purchasing. Display of MLS data is usually deemed reliable but is NOT guaranteed accurate by the MLS. Buyers are responsible for verifying the accuracy of all information and should investigate the data themselves or retain appropriate professionals. Information from sources other than the Listing Agent may have been included in the MLS data. Unless otherwise specified in writing, Broker/Agent has not and will not verify any information obtained from other sources. The Broker/Agent providing the information contained herein may or may not have been the Listing and/or Selling Agent.