

# \$5,995 - 6348 Primrose Avenue, Los Angeles

MLS® #25589205

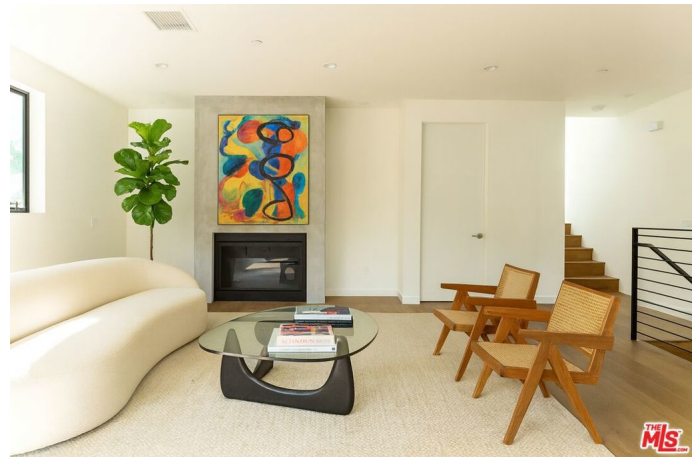
---

## \$5,995

3 Bedroom, 3.00 Bathroom, 1,950 sqft  
Residential Lease on 0 Acres

N/A, Los Angeles,

Nestled in the heart of Hollywood Dell, this striking contemporary duplex was designed and built by award-winning developer Giraffe. Sleek, turnkey, and design-forward, the residence offers nearly 1,950 square feet of refined living space with 3 bedrooms and 2.5 bathrooms. The open-concept main level is anchored by a gorgeous chef's kitchen with custom cabinetry, quartz countertops, tasteful lighting fixtures, and premium Samsung stainless-steel appliances. Flow seamlessly into the living and dining areas, complete with high ceilings, recessed lighting, oak wood floors, and a cozy fireplace. A spacious balcony extends the entertaining space outdoors, perfect for morning coffee or evening cocktails. A sculptural staircase leads to the private quarters, with a thoughtful landing featuring a built-in bench. The primary suite feels like a boutique hotel retreat, boasting its own balcony with mountain views, a spa-like ensuite bathroom, and a walk-in closet. Designed for both style and function, the home is surrounded by mature landscaping that creates a serene, California-inspired oasis. Outdoor entertaining spaces, a two-car attached garage, and a laundry room with Samsung washer and dryer complete the offering. Ideally located on a quiet residential street, yet just moments from Hollywood, Los Feliz, Beachwood Canyon, and landmark dining and nightlife. Easy freeway access and proximity to major studios make this home as practical as it is beautiful. A



rare opportunity to live in a contemporary jewel in one of Los Angeles' most iconic neighborhoods. The unit is vacant, all images with furniture are virtually staged.

Built in 2017

## Essential Information

MLS® #	25589205
Price	\$5,995
Bedrooms	3
Bathrooms	3.00
Full Baths	2
Half Baths	1
Square Footage	1,950
Acres	0.14
Year Built	2017
Type	Residential Lease
Sub-Type	Condominium
Style	Contemporary
Status	Closed
Listing Agent	Victoria Jesionek
Listing Office	Compass

## Community Information

Address	6348 Primrose Avenue
Area	C30 - Hollywood Hills East
Subdivision	N/A
City	Los Angeles
County	Los Angeles
Zip Code	90068

## Amenities

Parking Spaces	2
Parking	Controlled Entrance, Covered, Door-Multi, Driveway, Garage, Garage Door Opener
Garages	Controlled Entrance, Covered, Door-Multi, Driveway, Garage, Garage Door Opener
View	Hills

Pool	None
------	------

## Interior

Interior	Tile, Wood
Interior Features	Breakfast Bar, Separate/Formal Dining Room, Eat-in Kitchen, Open Floorplan, Loft, Walk-In Closet(s)
Appliances	Dishwasher, Gas Cooktop, Disposal, Refrigerator, Dryer
Heating	Central
Cooling	Central Air
Fireplace	Yes
Fireplaces	Living Room
# of Stories	2
Stories	Two, Multi/Split

## Additional Information

Date Listed	September 8th, 2025
Days on Market	7
Zoning	LARD2
Short Sale	N
RE / Bank Owned	N

Based on information from California Regional Multiple Listing Service, Inc. as of December 29th, 2025 at 12:56am PST. This information is for your personal, non-commercial use and may not be used for any purpose other than to identify prospective properties you may be interested in purchasing. Display of MLS data is usually deemed reliable but is NOT guaranteed accurate by the MLS. Buyers are responsible for verifying the accuracy of all information and should investigate the data themselves or retain appropriate professionals. Information from sources other than the Listing Agent may have been included in the MLS data. Unless otherwise specified in writing, Broker/Agent has not and will not verify any information obtained from other sources. The Broker/Agent providing the information contained herein may or may not have been the Listing and/or Selling Agent.