

# \$2,560 - 1525 S Beverly Drive, Los Angeles

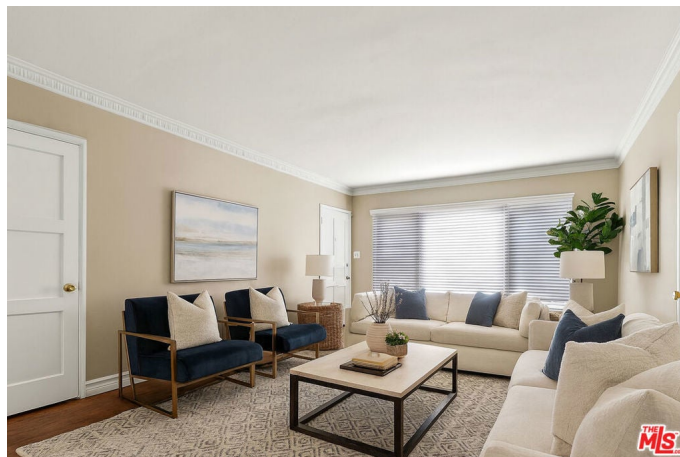
MLS® #25588527

## \$2,560

2 Bedroom, 1.00 Bathroom,  
Residential Lease on 0 Acres

N/A, Los Angeles,

Charming 2-Bedroom Retreat in Prime Location Available Now! Fresh, clean, and ready for immediate move-in, this charming 2-bedroom, 1-bath residence is ideally situated in a quiet, well-maintained building. This serene back unit is located on the main level, offering both privacy and convenience. Enjoy a spacious living room and dedicated dining area featuring brand-new laminate flooring and new window treatments. The bathroom offers both a separate shower and bathtub, perfect for comfort and relaxation. Additional highlights include: Generous closet space in both bedrooms One covered parking space. Friendly, long-term-oriented property owner and access to local temples, markets, restaurants, and public transportation. Some photos may feature virtual staging for design inspiration. This apartment is leased unfurnished. Priced to lease quickly; don't miss out!



Built in 1947

## Essential Information

MLS® #	25588527
Price	\$2,560
Bedrooms	2
Bathrooms	1.00
Full Baths	1
Acres	0.15
Year Built	1947

Type	Residential Lease
Sub-Type	Condominium
Style	Traditional
Status	Closed
Listing Agent	Lori Hashman Berris
Listing Office	Sotheby's International Realty

### **Community Information**

Address	1525 S Beverly Drive
Area	C09 - Beverlywood Vicinity
Subdivision	N/A
City	Los Angeles
County	Los Angeles
Zip Code	90035

### **Amenities**

Utilities	Trash Collection, Water
Parking Spaces	1
Parking	Assigned, Covered
Garages	Assigned, Covered
Pool	None

### **Interior**

Interior Features	Separate/Formal Dining Room
Appliances	Refrigerator
Heating	Forced Air, Baseboard
Cooling	None
Fireplace	Yes
Fireplaces	None
# of Stories	2
Stories	One

### **Additional Information**

Date Listed	September 8th, 2025
Days on Market	73
Zoning	LAR3
Short Sale	N
RE / Bank Owned	N

Based on information from California Regional Multiple Listing Service, Inc. as of April 28th, 2026 at 8:13am PDT. This

information is for your personal, non-commercial use and may not be used for any purpose other than to identify prospective properties you may be interested in purchasing. Display of MLS data is usually deemed reliable but is NOT guaranteed accurate by the MLS. Buyers are responsible for verifying the accuracy of all information and should investigate the data themselves or retain appropriate professionals. Information from sources other than the Listing Agent may have been included in the MLS data. Unless otherwise specified in writing, Broker/Agent has not and will not verify any information obtained from other sources. The Broker/Agent providing the information contained herein may or may not have been the Listing and/or Selling Agent.