

# \$995,000 - 2030 E Amado Road, Palm Springs

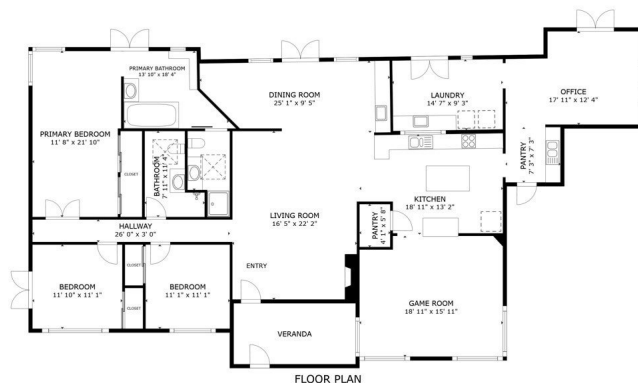
MLS® #25586335PS

## \$995,000

3 Bedroom, 2.00 Bathroom, 2,431 sqft  
Residential on 0 Acres

Sunrise Park, Palm Springs,

MODERNIST lines and mountain VIEWS framed by swaying palms set the stage for this classic Meiselman home, circa 1956, located in the heart of Sunrise Park. A private front courtyard introduces the home with its modernist overhang and walls of glass, while inside the two-way fireplace creates a dramatic centerpiece, connecting the living room with the family room. Beamed ceilings, a built-in bookcase, skylights both traditional and solar tube, and a wet bar enrich the main gathering spaces, with the dining area looking out to the pool and French doors opening wide for seamless indoor-outdoor flow. The chef's kitchen is designed for entertaining with a center island, generous counter space, and a walk-in pantry, opening to the family room where a pool table currently sits and sharing the warmth of the fireplace. Nearby, a large office with extensive built-ins, a wet bar, and patio access provides versatility as a workspace, media room, or even a potential fourth bedroom. Bedrooms are arranged along the central hall, with the ensuite primary retreat featuring direct pool access, a walk-in closet, and a bath with separate tub and shower. The second guest room opens to the side patio and shares a full bath with the third. The outdoor spaces capture the Palm Springs lifestyle with a kidney-shaped pool, pergola-shaded entertaining area, newer built-in barbecue with refrigerator and counter seating. BRAND NEW HVAC SYSTEM AND FUNACE, ROOF RECENTLY RE-COATED,



SIZES AND DIMENSIONS ARE APPROXIMATE, ACTUAL MAY VARY.

Matterport

PHYSICAL INSPECTION AND SEWER  
INSPECTION AVAILABLE.

Built in 1956

**Essential Information**

MLS® #	25586335PS
Price	\$995,000
Bedrooms	3
Bathrooms	2.00
Full Baths	2
Square Footage	2,431
Acres	0.22
Year Built	1956
Type	Residential
Sub-Type	Single Family Residence
Style	Mid-Century Modern
Status	Closed
Listing Agent	Brady Sandahl
Listing Office	Keller Williams Luxury Homes

**Community Information**

Address	2030 E Amado Road
Area	332 - Central Palm Springs
Subdivision	Sunrise Park
City	Palm Springs
County	Riverside
Zip Code	92262

**Amenities**

Parking Spaces	2
Parking	Door-Multi, Direct Access, Driveway, Garage
# of Garages	2
Garages	Door-Multi, Direct Access, Driveway, Garage
View	Mountain(s), Pool
Has Pool	Yes
Pool	Gunitite, Private
Security	Carbon Monoxide Detector(s), Smoke Detector(s)

## Exterior

Exterior	Stucco
Lot Description	Landscaped
Windows	Blinds, Skylight(s)
Construction	Stucco
Foundation	Slab

## Interior

Interior	Tile, Wood
Interior Features	Wet Bar, Breakfast Bar, Ceiling Fan(s), Separate/Formal Dining Room, Open Floorplan, Recessed Lighting, Utility Room, Walk-In Pantry
Appliances	Barbecue, Built-In, Double Oven, Dishwasher, Gas Cooktop, Microwave, Refrigerator, Dryer, Washer
Heating	Central, Forced Air
Cooling	Central Air
Fireplace	Yes
Fireplaces	Family Room, Living Room, Multi-Sided, Recreation Room
# of Stories	1
Stories	One

## Additional Information

Date Listed	September 3rd, 2025
Days on Market	71
Zoning	R1C
Short Sale	N
RE / Bank Owned	N

Based on information from California Regional Multiple Listing Service, Inc. as of April 22nd, 2026 at 7:57pm PDT. This information is for your personal, non-commercial use and may not be used for any purpose other than to identify prospective properties you may be interested in purchasing. Display of MLS data is usually deemed reliable but is NOT guaranteed accurate by the MLS. Buyers are responsible for verifying the accuracy of all information and should investigate the data themselves or retain appropriate professionals. Information from sources other than the Listing Agent may have been included in the MLS data. Unless otherwise specified in writing, Broker/Agent has not and will not verify any information obtained from other sources. The Broker/Agent providing the information contained herein may or may not have been the Listing and/or Selling Agent.