

\$2,500 - 420 S San Pedro Street # 224, Los Angeles

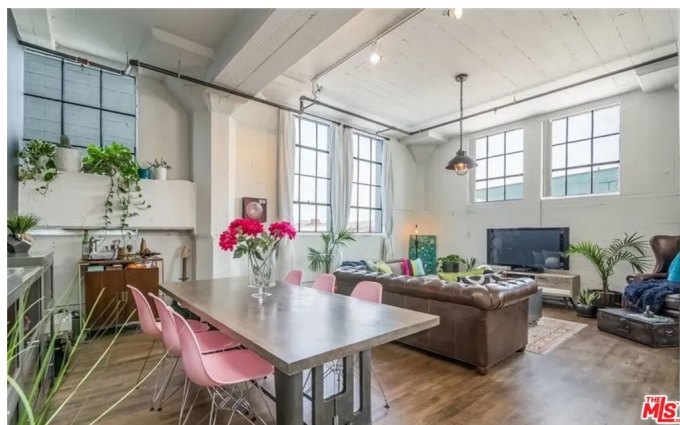
MLS® #25585263

\$2,500

1 Bedroom, 1.00 Bathroom, 900 sqft
Residential Lease on 2 Acres

N/A, Los Angeles,

The light-filled live/work corner loft at the Little Tokyo Lofts has a unique floor plan with distinct spaces without sacrificing the open loft feel. Eleven-foot ceilings, huge windows, hardwood floors, stainless kitchen with oversized island, and defined bedroom area with large walk-in closet. Little Tokyo Lofts was the historic Westinghouse Electric elevator factory, built in the 1920s and converted to condos in 2005. This loft complex includes a year-round heated pool and spa, BBQ area, gym, pet area, 24-hour security, and, most importantly, one assigned parking space and parking for guests in a secure parking structure attached to the building. Great community with a small-town feel. Five-minute walk to the heart of Little Tokyo.



Built in 1922

Essential Information

MLS® #	25585263
Price	\$2,500
Bedrooms	1
Bathrooms	1.00
Full Baths	1
Square Footage	900
Acres	1.75
Year Built	1922
Type	Residential Lease
Sub-Type	Condominium

Status	Closed
Listing Agent	Christiano Sampaio
Listing Office	Loftway

Community Information

Address	420 S San Pedro Street # 224
Area	C42 - Downtown L.A.
Subdivision	N/A
City	Los Angeles
County	Los Angeles
Zip Code	90013

Amenities

Amenities	Controlled Access, Pool, Spa/Hot Tub
Parking Spaces	1
Parking	Community Structure
Garages	Community Structure
View	City Lights
Has Pool	Yes
Pool	Community, Heated, Association
Security	Carbon Monoxide Detector(s), Fire Detection System, Fire Sprinkler System, Gated Community, 24 Hour Security, Smoke Detector(s)

Interior

Interior	Wood
Appliances	Disposal, Microwave, Refrigerator, Dryer, Washer
Heating	Central
Cooling	Central Air
Fireplaces	None
# of Stories	6
Stories	One

Additional Information

Date Listed	August 30th, 2025
Days on Market	11
Zoning	LAM2
Short Sale	N
RE / Bank Owned	N

Based on information from California Regional Multiple Listing Service, Inc. as of April 5th, 2026 at 3:15pm PDT. This

information is for your personal, non-commercial use and may not be used for any purpose other than to identify prospective properties you may be interested in purchasing. Display of MLS data is usually deemed reliable but is NOT guaranteed accurate by the MLS. Buyers are responsible for verifying the accuracy of all information and should investigate the data themselves or retain appropriate professionals. Information from sources other than the Listing Agent may have been included in the MLS data. Unless otherwise specified in writing, Broker/Agent has not and will not verify any information obtained from other sources. The Broker/Agent providing the information contained herein may or may not have been the Listing and/or Selling Agent.