

\$12,500 - 236 Reeves Drive, Beverly Hills

MLS® #25583677

\$12,500

3 Bedroom, 3.00 Bathroom, 2,040 sqft

Residential Lease on 0 Acres

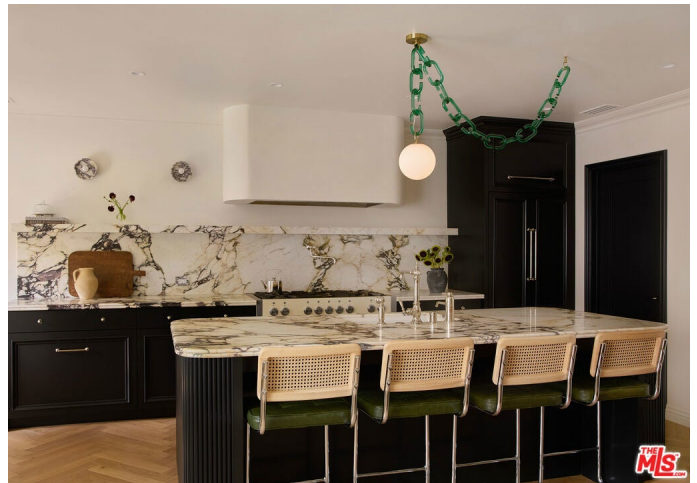
N/A, Beverly Hills,

Welcome to 236 S Reeves a designer-done 1930's Spanish duplex in the heart of Beverly Hills. This top-floor residence is flooded with natural light and lives like a single-family home, offering 3 bedrooms with en-suite baths. Original character arched windows, built-ins, and a fireplace meets modern luxury with herringbone hardwood floors, a marble-clad gourmet kitchen, new top-of-the-line appliances, and smart home technology. Thoughtful upgrades include Italian viola marble with TuffSkin protection, whole-house water filtration, and a reverse osmosis system with insta-hot. Secure gated entry, in-unit laundry room, and two dedicated parking spaces complete the offering. Perfectly positioned near Beverly Hills' world-class shopping, dining, and entertainment, surrounded by top-rated schools.

Built in 1935

Essential Information

MLS® #	25583677
Price	\$12,500
Bedrooms	3
Bathrooms	3.00
Full Baths	3
Square Footage	2,040
Acres	0.14
Year Built	1935



Type	Residential Lease
Sub-Type	Condominium
Style	Spanish
Status	Closed
Listing Agent	Kati Cattaneo
Listing Office	Sotheby's International Realty

Community Information

Address	236 Reeves Drive
Area	C01 - Beverly Hills
Subdivision	N/A
City	Beverly Hills
County	Los Angeles
Zip Code	90212

Amenities

Parking	Assigned, Uncovered
Garages	Assigned, Uncovered
View	None
Pool	None

Exterior

Windows	Bay Window(s), Skylight(s)
---------	----------------------------

Interior

Interior	Tile, Wood
Interior Features	Breakfast Bar, High Ceilings, Recessed Lighting, Separate/Formal Dining Room
Appliances	Refrigerator, Dishwasher, Disposal, Dryer, Gas Cooktop, Gas Oven, Oven, Range Hood, Washer, Water Purifier
Heating	Central
Cooling	Central Air
Fireplace	Yes
Fireplaces	Living Room
# of Stories	2
Stories	One

Additional Information

Date Listed	August 27th, 2025
-------------	-------------------

Days on Market	22
Zoning	BHR4YY
Short Sale	N
RE / Bank Owned	N

Based on information from California Regional Multiple Listing Service, Inc. as of February 5th, 2026 at 6:45pm PST. This information is for your personal, non-commercial use and may not be used for any purpose other than to identify prospective properties you may be interested in purchasing. Display of MLS data is usually deemed reliable but is NOT guaranteed accurate by the MLS. Buyers are responsible for verifying the accuracy of all information and should investigate the data themselves or retain appropriate professionals. Information from sources other than the Listing Agent may have been included in the MLS data. Unless otherwise specified in writing, Broker/Agent has not and will not verify any information obtained from other sources. The Broker/Agent providing the information contained herein may or may not have been the Listing and/or Selling Agent.