

\$3,950 - 2449 Riverside Place # Rear House, Los Angeles

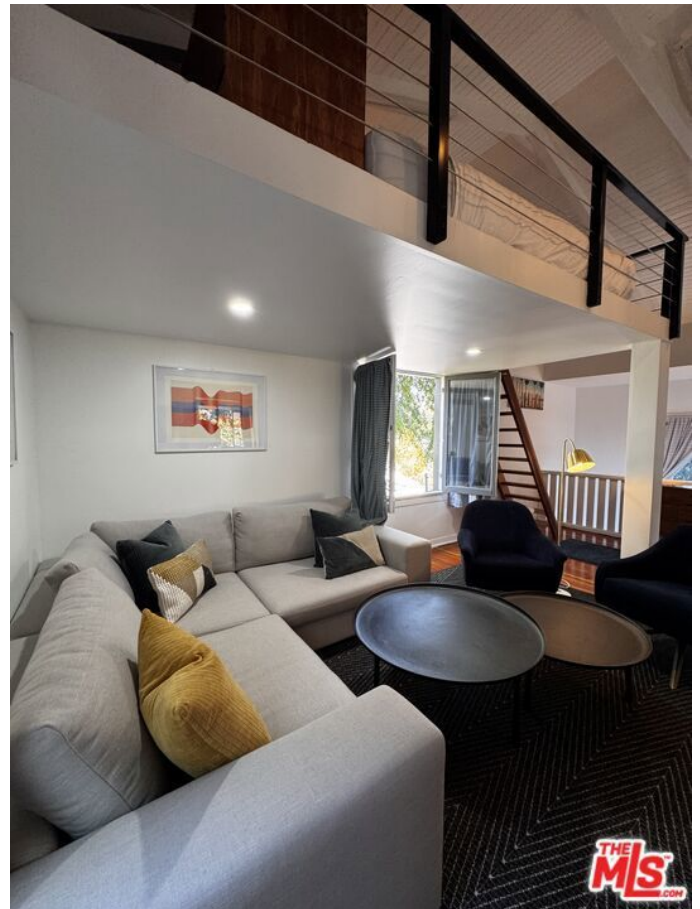
MLS® #25576997

\$3,950

0 Bedroom, 1.00 Bathroom, 664 sqft
Residential Lease on 0 Acres

N/A, Los Angeles,

Stylish Silver Lake Rear Loft Home with Private Outdoor Spaces, Detached Office & EV Charger 2449 Riverside Place, offered furnished for lease set at the back of a duplex lot on a quiet cul-de-sac in one of Silver Lake's most charming enclaves, this beautifully furnished loft residence offers a rare combination of privacy, creative flexibility, and lush outdoor living. Inside, vaulted open-beam ceilings and rich hardwood floors create a light-filled, airy ambiance. The living room is anchored by a spacious lounge area, seamlessly connected to a lofted sleeping space featuring a king-size Tuft & Needle mattress for the perfect night's rest. The modern kitchen boasts sleek cabinetry, quartz countertops, stainless steel appliances, and a sunny breakfast nook with built-in desk space. A walk-in closet provides ample storage with both open shelving and enclosed wardrobe systems. The bathroom is fresh and bright with designer tile, a walk-in shower, and a window framing the garden beyond. Step outside and you'll find multiple private spaces to relax or entertain: a landscaped backyard with lounge seating, a shady deck under mature trees, and a brick pathway leading to a detached office/studio perfect for remote work, art, or reading. The property backs directly onto the historic Corralitas Red Car Trail, where you'll find a large parking pad with space for multiple vehicles and direct gated access into the backyard. A Level 1 EV charger is also included, making it convenient for electric



vehicle owners. Located moments from Silver Lake's best coffee shops, dining, and boutiques, with easy access to Griffith Park, the LA River bike path, and Downtown LA. Follow the directions on the attached link to arrive at the property.
<https://goo.gl/maps/Jeah9wUGZUTvxEYZ8>

Built in 1925

Essential Information

MLS® #	25576997
Price	\$3,950
Bathrooms	1.00
Full Baths	1
Square Footage	664
Acres	0.08
Year Built	1925
Type	Residential Lease
Sub-Type	Single Family Residence
Status	Closed
Listing Agent	Douglas Stockley
Listing Office	eXp Realty of California Inc

Community Information

Address	2449 Riverside Place # Rear House
Area	C21 - Silver Lake - Echo Park
Subdivision	N/A
City	Los Angeles
County	Los Angeles
Zip Code	90039

Amenities

Parking Spaces	4
View	Hills
Pool	None

Interior

Interior	Wood
----------	------

Interior Features	Walk-In Closet(s), Loft
Appliances	Dryer, Washer, Dishwasher, Disposal, Refrigerator
Heating	Wall Furnace
Fireplaces	None
# of Stories	2
Stories	Two

Additional Information

Date Listed	August 11th, 2025
Days on Market	59
Zoning	LAR2
Short Sale	N
RE / Bank Owned	N

Based on information from California Regional Multiple Listing Service, Inc. as of February 11th, 2026 at 12:55am PST. This information is for your personal, non-commercial use and may not be used for any purpose other than to identify prospective properties you may be interested in purchasing. Display of MLS data is usually deemed reliable but is NOT guaranteed accurate by the MLS. Buyers are responsible for verifying the accuracy of all information and should investigate the data themselves or retain appropriate professionals. Information from sources other than the Listing Agent may have been included in the MLS data. Unless otherwise specified in writing, Broker/Agent has not and will not verify any information obtained from other sources. The Broker/Agent providing the information contained herein may or may not have been the Listing and/or Selling Agent.