

\$3,500 - 1416 Helen Drive, Los Angeles

MLS® #25574305

\$3,500

3 Bedroom, 2.00 Bathroom, 1,009 sqft

Residential Lease on 0 Acres

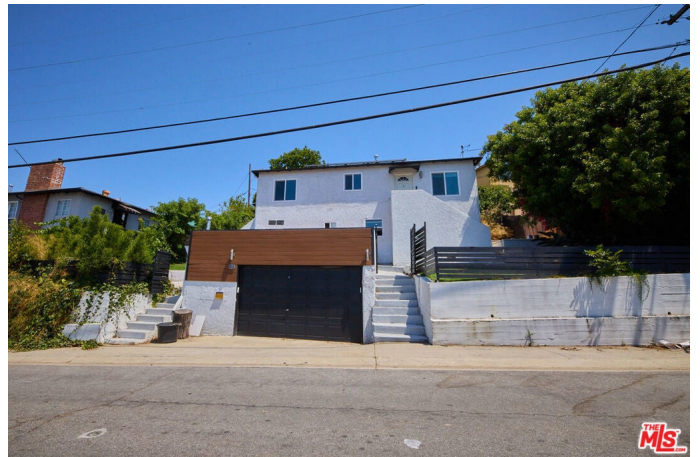
N/A, Los Angeles,

Wonderfully located 3 BD, 2 BA house in the heart of City Terrace is ready to go. This lovely property has been fully remodeled with new double-paned windows and laminate flooring.

Kitchen and both bathrooms have been completely remodeled, fresh interior & exterior paint, new front fence, landscaping, and new electrical system. Great private entertaining and atmospheric area in the rear of the property. Washer/dryer and EV charging in garage, solar panels, smart home features, Yale lock on front door & MyQ smart garage. Views of DTLA, Hollywood Sign, Griffith Observatory and Dodger Stadium.

Conveniently located within a few minutes of Downtown Los Angeles, LACHSA, Cal State and USC Keck School of Medicine.

Convenient to the 10 Freeway.



Built in 1939

Essential Information

MLS® #	25574305
Price	\$3,500
Bedrooms	3
Bathrooms	2.00
Full Baths	2
Square Footage	1,009
Acres	0.10
Year Built	1939
Type	Residential Lease

Sub-Type	Condominium
Status	Closed
Listing Agent	Richard Battaglia
Listing Office	Compass

Community Information

Address	1416 Helen Drive
Area	ELA - East Los Angeles
Subdivision	N/A
City	Los Angeles
County	Los Angeles
Zip Code	90063

Amenities

Utilities	Gardener
Parking Spaces	2
Parking	Door-Multi, Door-Single, Garage, Private
# of Garages	2
Garages	Door-Multi, Door-Single, Garage, Private
Pool	None
Security	Gated Community

Exterior

Exterior	Stucco
Roof	Composition, Shingle
Construction	Stucco

Interior

Interior	Laminate
Interior Features	Breakfast Bar, Eat-in Kitchen
Appliances	Disposal, Dryer, Gas Oven, Oven, Range, Range Hood, Refrigerator, Washer
Heating	Central
Cooling	Central Air
Fireplaces	None
# of Stories	1
Stories	Multi/Split

Additional Information

Date Listed	August 1st, 2025
-------------	------------------

Days on Market	139
Zoning	LCR2*
Short Sale	N
RE / Bank Owned	N

Based on information from California Regional Multiple Listing Service, Inc. as of January 24th, 2026 at 2:45am PST. This information is for your personal, non-commercial use and may not be used for any purpose other than to identify prospective properties you may be interested in purchasing. Display of MLS data is usually deemed reliable but is NOT guaranteed accurate by the MLS. Buyers are responsible for verifying the accuracy of all information and should investigate the data themselves or retain appropriate professionals. Information from sources other than the Listing Agent may have been included in the MLS data. Unless otherwise specified in writing, Broker/Agent has not and will not verify any information obtained from other sources. The Broker/Agent providing the information contained herein may or may not have been the Listing and/or Selling Agent.