

\$3,200,000 - 821 Alma Real Drive, Pacific Palisades

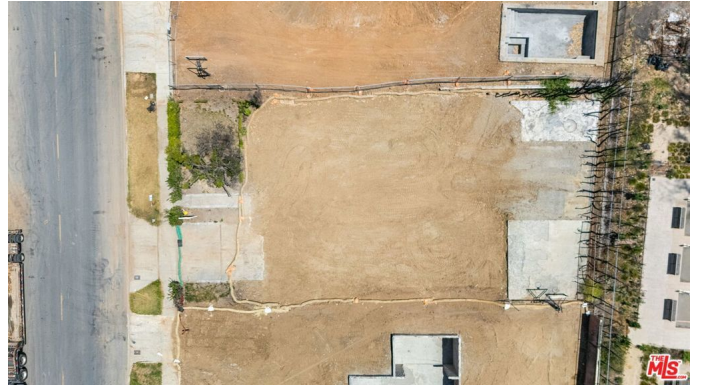
MLS® #25567829

\$3,200,000

0 Bedroom, 0.00 Bathroom,
Land on 0 Acres

N/A, Pacific Palisades,

A premier spot near the soon to be renovated Palisades Park and the George Wolfberg Park and trailhead at Potrero Canyon. Once an enchanting New England traditional in the heart of the Huntington Palisades, this home stood with front row views of the beloved 4th of July Race and Parade. Though the structure no longer stands, the legacy of this gracious and elegant home remains, a rare opportunity to reimagine and rebuild in one of the Palisades' most coveted neighborhoods. Note: HOA fees are annual, not monthly.



Essential Information

MLS® #	25567829
Price	\$3,200,000
Bathrooms	0.00
Acres	0.18
Type	Land
Status	Closed
Listing Agent	Ellen McCormick
Listing Office	Berkshire Hathaway HomeServices California Properties

Community Information

Address	821 Alma Real Drive
Area	C15 - Pacific Palisades
Subdivision	N/A
City	Pacific Palisades
County	Los Angeles
Zip Code	90272

Amenities

View Mountain(s), Park/Greenbelt

Additional Information

Date Listed July 21st, 2025

Days on Market 121

Zoning LAR1

Short Sale N

RE / Bank Owned N

Based on information from California Regional Multiple Listing Service, Inc. as of April 25th, 2026 at 5:45pm PDT. This information is for your personal, non-commercial use and may not be used for any purpose other than to identify prospective properties you may be interested in purchasing. Display of MLS data is usually deemed reliable but is NOT guaranteed accurate by the MLS. Buyers are responsible for verifying the accuracy of all information and should investigate the data themselves or retain appropriate professionals. Information from sources other than the Listing Agent may have been included in the MLS data. Unless otherwise specified in writing, Broker/Agent has not and will not verify any information obtained from other sources. The Broker/Agent providing the information contained herein may or may not have been the Listing and/or Selling Agent.