

\$629,000 - 6000 Canterbury Drive # D301, Culver City

MLS® #25556439

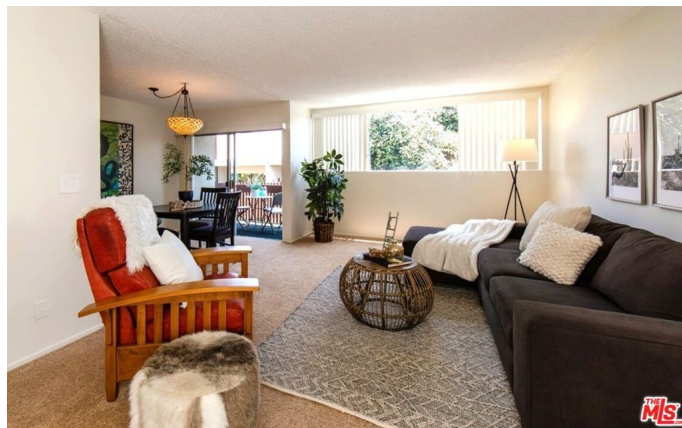
\$629,000

2 Bedroom, 2.00 Bathroom, 1,029 sqft

Residential on 3 Acres

N/A, Culver City,

Highly sought-after top floor corner end unit with peaceful views of the lush interior grounds from every room and ideally positioned in the center of the complex near all the amenities including a large outdoor pool and sundeck, gym, sauna, clubhouse, and peaceful babbling brook below. Enter into an open and bright living room with a wall of windows that frame the outside trees and enjoy preparing meals in the remodeled kitchen with granite counters, wood cabinets with pullouts, oversized sink, slide-in oven, and tile flooring. The private primary suite offers a full bathroom and double-sided walk-in closet with custom shelving and pull-out storage drawers and the 2nd bedroom is roomy and comfortable with floor-to-ceiling closets. Additional highlights include a separate bar area with extra storage, ceiling fans, balcony overlooking a stream and fountain, and convenient location near the elevator and laundry room. Shopping mall, eateries, grocery stores, and parks are all nearby.



Built in 1971

Essential Information

| | |
|------------|-----------|
| MLS® # | 25556439 |
| Price | \$629,000 |
| Bedrooms | 2 |
| Bathrooms | 2.00 |
| Full Baths | 1 |

| | |
|----------------|-------------------|
| Square Footage | 1,029 |
| Acres | 2.58 |
| Year Built | 1971 |
| Type | Residential |
| Sub-Type | Condominium |
| Style | Traditional |
| Status | Closed |
| Listing Agent | Brian Christie |
| Listing Office | Estate Properties |

Community Information

| | |
|-------------|------------------------------|
| Address | 6000 Canterbury Drive # D301 |
| Area | C28 - Culver City |
| Subdivision | N/A |
| City | Culver City |
| County | Los Angeles |
| Zip Code | 90230 |

Amenities

| | |
|----------------|---|
| Amenities | Clubhouse, Controlled Access, Maintenance Grounds, Pool, Security, Trash, Billiard Room, Hot Water, Pet Restrictions, Sauna |
| Parking Spaces | 2 |
| Parking | Assigned, Carport, Garage, Gated, Tandem |
| Garages | Assigned, Carport, Garage, Gated, Tandem |
| View | Water, Courtyard |
| Has Pool | Yes |
| Pool | In Ground, Association, Fenced |
| Security | Carbon Monoxide Detector(s), Gated Community, Smoke Detector(s), Key Card Entry, Resident Manager, Security Gate |

Exterior

| | |
|-------------------|-----------------------------------|
| Exterior | Stucco, Wood Siding |
| Exterior Features | Misting System |
| Roof | Composition, Shingle, Elastomeric |
| Construction | Stucco, Wood Siding |

Interior

| | |
|-------------------|---|
| Interior | Carpet, Tile |
| Interior Features | Ceiling Fan(s), Separate/Formal Dining Room |

| | |
|--------------|---|
| Appliances | Dishwasher, Electric Oven, Disposal, Range Hood |
| Cooling | None |
| Fireplaces | None |
| # of Stories | 3 |

School Information

| | |
|----------|---------------------|
| District | Culver City Unified |
|----------|---------------------|

Additional Information

| | |
|-----------------|----------------|
| Date Listed | July 7th, 2025 |
| Days on Market | 11 |
| Zoning | CCR3* |
| Short Sale | N |
| RE / Bank Owned | N |

Based on information from California Regional Multiple Listing Service, Inc. as of January 26th, 2026 at 6:15am PST. This information is for your personal, non-commercial use and may not be used for any purpose other than to identify prospective properties you may be interested in purchasing. Display of MLS data is usually deemed reliable but is NOT guaranteed accurate by the MLS. Buyers are responsible for verifying the accuracy of all information and should investigate the data themselves or retain appropriate professionals. Information from sources other than the Listing Agent may have been included in the MLS data. Unless otherwise specified in writing, Broker/Agent has not and will not verify any information obtained from other sources. The Broker/Agent providing the information contained herein may or may not have been the Listing and/or Selling Agent.