

\$689,000 - 1925 Overland Avenue # 202, Los Angeles

MLS® #25548395

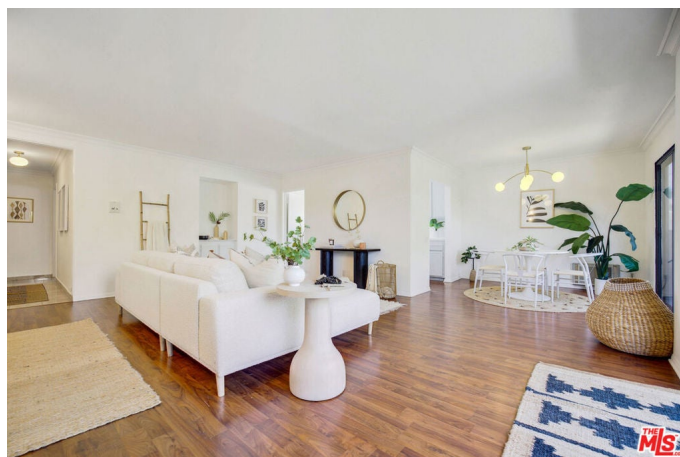
\$689,000

2 Bedroom, 2.00 Bathroom, 1,075 sqft

Residential on 0 Acres

N/A, Los Angeles,

Discover this spacious and bright two-bedroom, two-bath condominium in a highly sought-after Century City, Westwood-adjacent location. This inviting corner end unit offers an open floor plan with modern updates, including laminate flooring and fresh paint. The generously sized bedrooms feature walk-in closets. Step out onto the living room balcony and enjoy the view. Recently remodeled common areas boast new laminate flooring throughout, new carpeting in stairwells, fresh paint, and updated lighting. The complex offers controlled access, a community garage with two tandem parking spaces, and a storage locker. Additional amenities include a recreation room, community laundry, and a sun deck with a barbecue area. With easy access to top-rated schools, the 405 freeway, Santa Monica, UCLA, charming coffee shops, studios, grocery stores, and retail options, this is an opportunity you don't want to miss. Act fast!



Built in 1974

Essential Information

MLS® #	25548395
Price	\$689,000
Bedrooms	2
Bathrooms	2.00
Full Baths	2
Square Footage	1,075

Acres	0.28
Year Built	1974
Type	Residential
Sub-Type	Condominium
Style	Contemporary
Status	Closed
Listing Agent	Laura Salgues
Listing Office	The ONE Luxury Properties

Community Information

Address	1925 Overland Avenue # 202
Area	C05 - Westwood - Century City
Subdivision	N/A
City	Los Angeles
County	Los Angeles
Zip Code	90025

Amenities

Amenities	Controlled Access
Parking Spaces	2
Parking	Garage, Assigned, Community Structure, Tandem
Garages	Garage, Assigned, Community Structure, Tandem
View	Trees/Woods
Pool	None
Security	Gated Community

Interior

Interior	Carpet, Vinyl
Appliances	Dishwasher
Heating	Radiant
Fireplaces	None
# of Stories	1
Stories	Multi/Split

Additional Information

Date Listed	June 5th, 2025
Days on Market	116
Zoning	LAR3
Short Sale	N

RE / Bank Owned N

Based on information from California Regional Multiple Listing Service, Inc. as of January 20th, 2026 at 3:45am PST. This information is for your personal, non-commercial use and may not be used for any purpose other than to identify prospective properties you may be interested in purchasing. Display of MLS data is usually deemed reliable but is NOT guaranteed accurate by the MLS. Buyers are responsible for verifying the accuracy of all information and should investigate the data themselves or retain appropriate professionals. Information from sources other than the Listing Agent may have been included in the MLS data. Unless otherwise specified in writing, Broker/Agent has not and will not verify any information obtained from other sources. The Broker/Agent providing the information contained herein may or may not have been the Listing and/or Selling Agent.