

\$3,300 - 2700 Fletcher Drive # 3045, Los Angeles

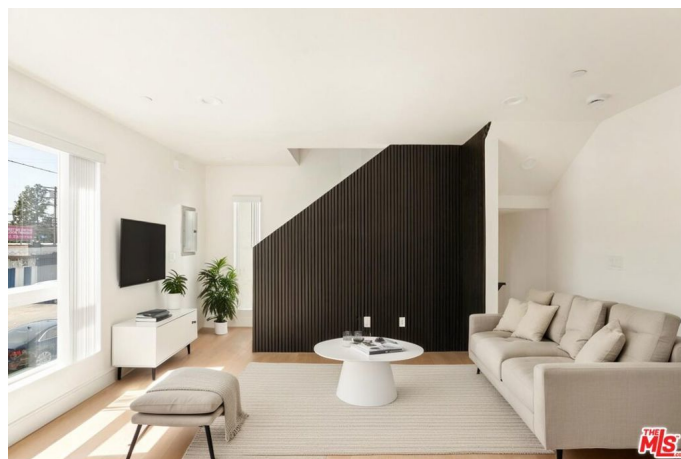
MLS® #25534155

\$3,300

2 Bedroom, 3.00 Bathroom, 1,200 sqft
Residential Lease on 0 Acres

N/A, Los Angeles,

Applicants must have a credit score of 720+ and strong financials. Welcome to 2700 Fletcher Drive a stunning collection of brand-new two- and three-story townhouse residences located in the heart of Los Angeles. Each home is thoughtfully designed with high-end finishes and modern touches throughout, offering an elevated living experience. Residents enjoy the convenience of secure, private parking and the peace of mind that comes with quality construction in a prime location. Nestled in the vibrant Atwater Village neighborhood, 2700 Fletcher Drive provides easy access to a variety of local amenities, including Whole Foods, charming coffee shops, and popular restaurants. Broker and agent do not guarantee the accuracy of square footage, lot size, or any other information concerning the conditions or features of the property provided by the seller or obtained from public records or other sources. Buyer is advised to independently verify the accuracy of all information through personal inspection and with appropriate professionals.



Built in 2025

Essential Information

MLS® #	25534155
Price	\$3,300
Bedrooms	2

Bathrooms	3.00
Full Baths	2
Half Baths	1
Square Footage	1,200
Acres	0.00
Year Built	2025
Type	Residential Lease
Sub-Type	Condominium
Style	Modern
Status	Closed
Listing Agent	Joshua Shamoilia
Listing Office	LA Estate Brokerage

Community Information

Address	2700 Fletcher Drive # 3045
Area	606 - Atwater
Subdivision	N/A
City	Los Angeles
County	Los Angeles
Zip Code	90039

Amenities

Utilities	Gardener
Parking Spaces	1
Parking	Door-Multi, Garage, Private
Garages	Door-Multi, Garage, Private
Pool	None

Interior

Interior	Tile, Vinyl
Appliances	Microwave, Refrigerator, Dryer, Washer
Heating	Central
Cooling	Central Air
Fireplaces	None
# of Stories	3
Stories	Multi/Split

Additional Information

Date Listed	May 4th, 2025
-------------	---------------

Days on Market 26

Short Sale N

RE / Bank Owned N

Based on information from California Regional Multiple Listing Service, Inc. as of January 17th, 2026 at 12:50pm PST. This information is for your personal, non-commercial use and may not be used for any purpose other than to identify prospective properties you may be interested in purchasing. Display of MLS data is usually deemed reliable but is NOT guaranteed accurate by the MLS. Buyers are responsible for verifying the accuracy of all information and should investigate the data themselves or retain appropriate professionals. Information from sources other than the Listing Agent may have been included in the MLS data. Unless otherwise specified in writing, Broker/Agent has not and will not verify any information obtained from other sources. The Broker/Agent providing the information contained herein may or may not have been the Listing and/or Selling Agent.