

# \$1,499,999 - 2122 Century Park Lane # 109, Los Angeles

MLS® #25533485

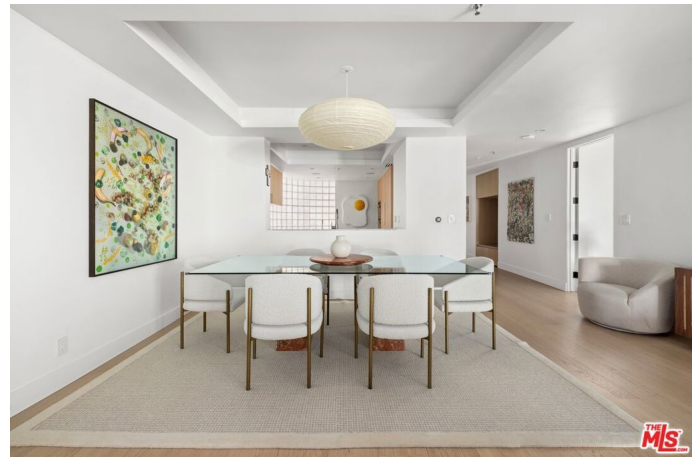
---

**\$1,499,999**

2 Bedroom, 3.00 Bathroom, 1,659 sqft  
Residential on 14 Acres

N/A, Los Angeles,

Impeccably designed, this contemporary two-bedroom, two-and-a-half-bath residence is nestled within the exclusive, guard-gated enclave of Park Place, a sought-after address offering unmatched security and resort-caliber amenities. Completely renovated, the home reflects an unwavering commitment to craftsmanship and timeless design. Imported rift white oak flooring from Spain flows seamlessly throughout, pairing effortlessly with custom Italian cabinetry and expansive built-in storage. In the open-concept kitchen, leathered Taj Mahal quartz countertops book-match the backsplash in an elevated nod to bespoke design, while state-of-the-art Miele appliances, an electric sensor cooktop, and a concealed refrigerator speak to the home's quiet sophistication. Soaring ceilings and architectural nuances frame a great room filled with natural light, creating a sense of ease and harmony. Upon arrival, guests are welcomed by full-length light oak doors with German-imported hardware. The primary suite is a private sanctuary, anchored by a Rain Forest Quartzite fireplace and opening to a tranquil patio via Fleetwood sliding glass doors. A custom walk-in closet complements the spa-like en-suite bath, complete with dual vanities, a built-in makeup station, a separate water closet, and a dual-headed shower with a built-in bench. Both en-suite baths are appointed with Taj Mahal quartz and satin brass Phylrich fixtures. The powder room features a custom floating sink carved from



imported Rainforest Quartz, backlit to heighten its sculptural elegance. A thoughtfully appointed laundry room with built-in cabinetry and counter space sits just off the entry, adjacent to a functional entryway bench seating and storage. Smart home enhancements include a new HVAC system, Ring doorbell, Nest thermostat, smart bidet toilets, reverse osmosis water filtration with hot/cold dispenser, blackout shades, and dimmable cassette lighting with motion sensors throughout. Park Place is at the heart of dynamic Century City, offering residents three pools, three spas, a state-of-the-art gym, tennis courts, pickleball and basketball courts, and acres of lushly landscaped grounds. From this prime location, one can stroll to Gelson's, dine at celebrated restaurants, shop at the Westfield Century City Plaza, or quickly reach the neighboring business district. Just minutes from Beverly Hills and surrounded by world-class culture, commerce, and convenience, Century City remains one of Los Angeles' most prestigious addresses home to industry leaders, creatives, and royalty alike. Here, elegance and ease converge in perfect harmony.

Built in 1988

**Essential Information**

MLS® #	25533485
Price	\$1,499,999
Bedrooms	2
Bathrooms	3.00
Full Baths	3
Square Footage	1,659
Acres	13.53
Year Built	1988
Type	Residential
Sub-Type	Condominium

Style	Contemporary
Status	Closed
Listing Agent	Tomer Fridman
Listing Office	Christie's International Real Estate SoCal

### Community Information

Address	2122 Century Park Lane # 109
Area	C05 - Westwood - Century City
Subdivision	N/A
City	Los Angeles
County	Los Angeles
Zip Code	90067

### Amenities

Amenities	Pet Restrictions, Clubhouse, Hot Water, Outdoor Cooking Area, Pool, Tennis Court(s)
Parking Spaces	3
Parking	Assigned, Community Structure, Controlled Entrance, Guest
Garages	Assigned, Community Structure, Controlled Entrance, Guest
View	City Lights
Has Pool	Yes
Pool	Association, Community
Security	Carbon Monoxide Detector(s), Gated with Guard

### Interior

Interior	Tile, Wood
Interior Features	Walk-In Closet(s)
Appliances	Dishwasher, Disposal, Microwave, Refrigerator, Dryer, Washer
Heating	Central
Cooling	Central Air
Fireplace	Yes
Stories	One

### Additional Information

Date Listed	May 9th, 2025
Days on Market	94
Zoning	LAR4
Short Sale	N
RE / Bank Owned	N

Based on information from California Regional Multiple Listing Service, Inc. as of December 11th, 2025 at 5:56pm PST. This information is for your personal, non-commercial use and may not be used for any purpose other than to identify prospective properties you may be interested in purchasing. Display of MLS data is usually deemed reliable but is NOT guaranteed accurate by the MLS. Buyers are responsible for verifying the accuracy of all information and should investigate the data themselves or retain appropriate professionals. Information from sources other than the Listing Agent may have been included in the MLS data. Unless otherwise specified in writing, Broker/Agent has not and will not verify any information obtained from other sources. The Broker/Agent providing the information contained herein may or may not have been the Listing and/or Selling Agent.