

\$1,299,500 - 1404 Monte Grande Place, Pacific Palisades

MLS® #25525507

\$1,299,500

0 Bedroom, 0.00 Bathroom,
Land on 0 Acres

N/A, Pacific Palisades,

GO BIG AND COME HOME! This Palisades Highlands 15,000-square-foot corner lot had a previous home of 7,569 square feet. You could build another 10% larger if you so desire! This property has great views and belongs to the wonderful Palisades Hills HOA! The seller has priced this property very aggressively; they are looking at offers as they come in!

Essential Information

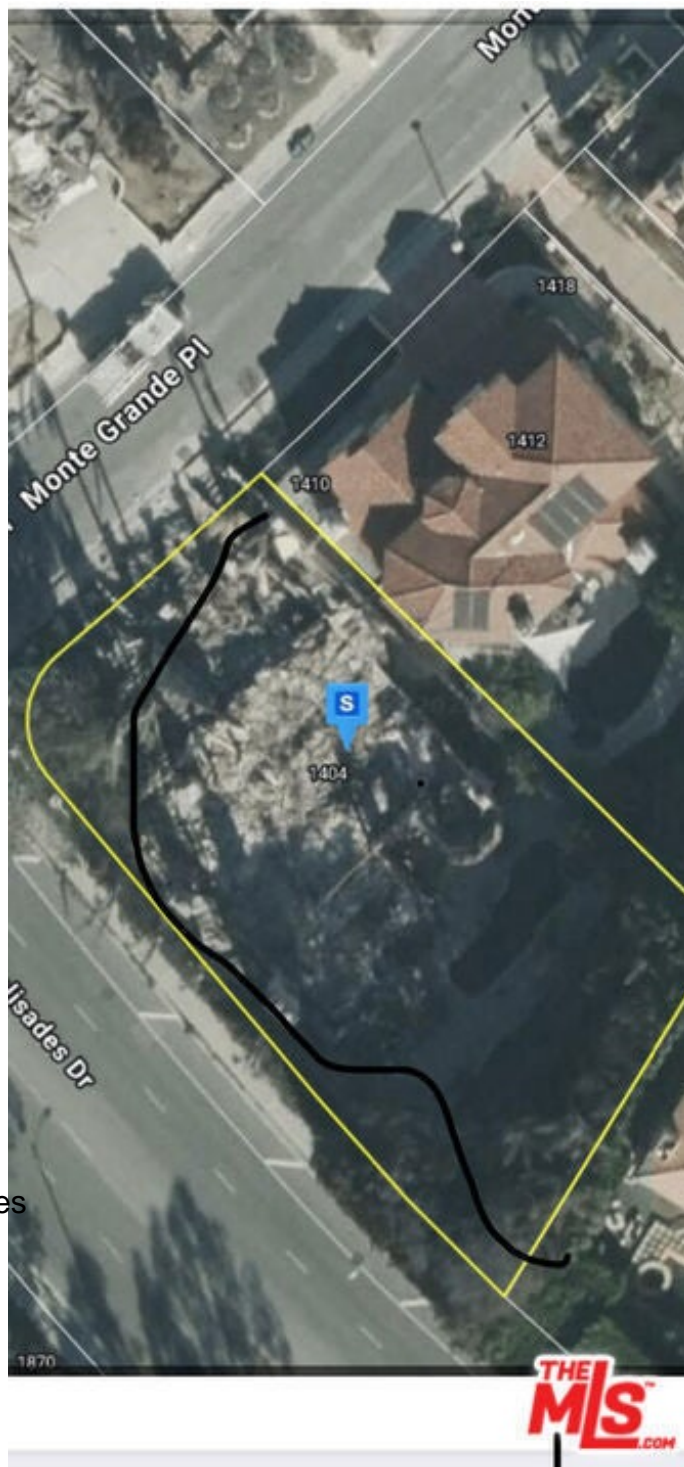
MLS® #	25525507
Price	\$1,299,500
Bathrooms	0.00
Acres	0.34
Type	Land
Status	Closed
Listing Agent	Tom Hackett
Listing Office	Rodeo Realty - Pacific Palisades

Community Information

Address	1404 Monte Grande Place
Area	C15 - Pacific Palisades
Subdivision	N/A
City	Pacific Palisades
County	Los Angeles
Zip Code	90272

Amenities

View	Canyon, City Lights, Coastline
------	--------------------------------



Additional Information

Date Listed	April 15th, 2025
Days on Market	17
Zoning	LARE15
Short Sale	N
RE / Bank Owned	N

Based on information from California Regional Multiple Listing Service, Inc. as of December 20th, 2025 at 8:50am PST. This information is for your personal, non-commercial use and may not be used for any purpose other than to identify prospective properties you may be interested in purchasing. Display of MLS data is usually deemed reliable but is NOT guaranteed accurate by the MLS. Buyers are responsible for verifying the accuracy of all information and should investigate the data themselves or retain appropriate professionals. Information from sources other than the Listing Agent may have been included in the MLS data. Unless otherwise specified in writing, Broker/Agent has not and will not verify any information obtained from other sources. The Broker/Agent providing the information contained herein may or may not have been the Listing and/or Selling Agent.