

\$1,800,000 - 14635 Whitfield Avenue, Pacific Palisades

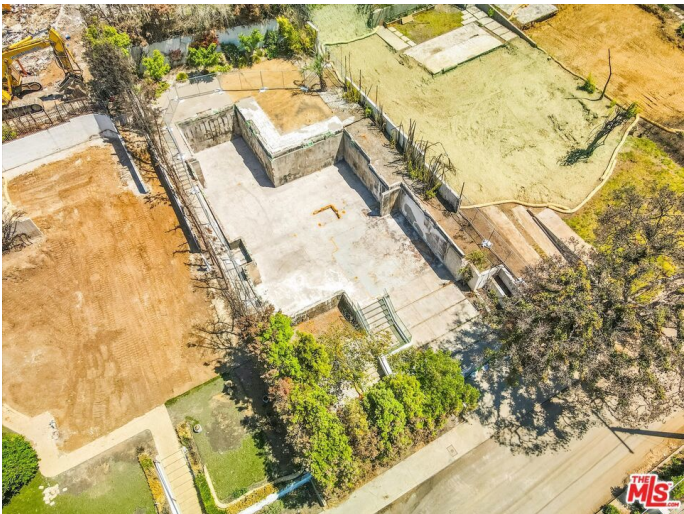
MLS® #25524393

\$1,800,000

0 Bedroom, 0.00 Bathroom,
Land on 0 Acres

N/A, Pacific Palisades,

All Highest & Best Offers due Friday 8/8 by 11:59 PM Mountain Time. Be part of the highly anticipated Palisades rebuild. This 6,873 square foot lot offers an incredible opportunity to design and build your dream home in one of the most desirable coastal communities. Phase 2 / US Army Corps of Engineers debris removal has been completed and the USACE has delivered the Final Sign-Off (FSO) - accelerating your path to new construction. The previous residence was an impressive 3-story, 6,568 square foot home featuring a rooftop patio that had sweeping city lights and ocean views. This property is ideal for those looking to reimagine luxury coastal living from the ground up. Whether you're an investor or a future homeowner, this is your chance to be part of the revitalization of a premier neighborhood and community.



Essential Information

| | |
|----------------|------------------------|
| MLS® # | 25524393 |
| Price | \$1,800,000 |
| Bathrooms | 0.00 |
| Acres | 0.16 |
| Type | Land |
| Status | Closed |
| Listing Agent | Tiffany Dalgic |
| Listing Office | Coldwell Banker Realty |

Community Information

| | |
|-------------|-------------------------|
| Address | 14635 Whitfield Avenue |
| Area | C15 - Pacific Palisades |
| Subdivision | N/A |
| City | Pacific Palisades |
| County | Los Angeles |
| Zip Code | 90272 |

School Information

| | |
|----------|---------------------|
| District | Los Angeles Unified |
|----------|---------------------|

Additional Information

| | |
|-----------------|------------------|
| Date Listed | April 10th, 2025 |
| Days on Market | 132 |
| Zoning | LAR1 |
| Short Sale | N |
| RE / Bank Owned | Y |

Based on information from California Regional Multiple Listing Service, Inc. as of February 9th, 2026 at 11:56am PST. This information is for your personal, non-commercial use and may not be used for any purpose other than to identify prospective properties you may be interested in purchasing. Display of MLS data is usually deemed reliable but is NOT guaranteed accurate by the MLS. Buyers are responsible for verifying the accuracy of all information and should investigate the data themselves or retain appropriate professionals. Information from sources other than the Listing Agent may have been included in the MLS data. Unless otherwise specified in writing, Broker/Agent has not and will not verify any information obtained from other sources. The Broker/Agent providing the information contained herein may or may not have been the Listing and/or Selling Agent.