

\$3,100 - 835 Sherbourne Drive # 14, Los Angeles

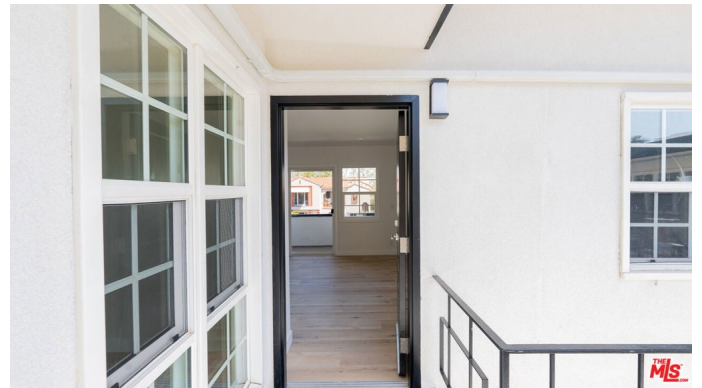
MLS® #25522745

\$3,100

1 Bedroom, 1.00 Bathroom,
Residential Lease on 0 Acres

N/A, Los Angeles,

****Be the first to live in this beautifully remodeled 1-bedroom, 1-bath unit with a very nice balcony. Everything is brand new from the sleek kitchen with modern appliances to the updated bathroom and stylish flooring throughout. Tons of natural light fill the space, creating a warm and inviting atmosphere. Located in a quiet, well-maintained 13-unit complex, this unit offers comfort, convenience, and a fresh start. The building's exterior has also been upgraded with new siding, windows, landscaping, and a controlled access entry. These units are conveniently located within walking distance to Robertson Blvd. and La Cienega Blvd., providing residents with easy access to all the incredible amenities and attractions that Los Angeles has to offer. Whether you're looking to shop at upscale boutiques, dine at trendy restaurants, or explore the vibrant nightlife, everything you could want is just steps away from your front door. Photos may not be of exact apartment home available and the Square footage when listed or from inquiry, is approximate. Don't miss your chance to call this bright, modern space home!**



Built in 1957

Essential Information

MLS® # 25522745

Price \$3,100

Bedrooms	1
Bathrooms	1.00
Full Baths	1
Acres	0.28
Year Built	1957
Type	Residential Lease
Sub-Type	Condominium
Status	Closed
Listing Agent	Sharlot Arabshahi
Listing Office	Keller Williams Beverly Hills

Community Information

Address	835 Sherbourne Drive # 14
Area	C19 - Beverly Center-Miracle Mile
Subdivision	N/A
City	Los Angeles
County	Los Angeles
Zip Code	90035

Amenities

Parking Spaces	2
Parking	Covered
Garages	Covered
Pool	None

Interior

Interior	Wood
Appliances	Dishwasher, Microwave, Refrigerator, Dryer, Washer
Heating	Central
Cooling	Central Air
Fireplaces	None
Stories	Multi/Split

Additional Information

Date Listed	April 10th, 2025
Days on Market	28
Zoning	LAR3
Short Sale	N
RE / Bank Owned	N

Based on information from California Regional Multiple Listing Service, Inc. as of February 5th, 2026 at 6:37am PST. This information is for your personal, non-commercial use and may not be used for any purpose other than to identify prospective properties you may be interested in purchasing. Display of MLS data is usually deemed reliable but is NOT guaranteed accurate by the MLS. Buyers are responsible for verifying the accuracy of all information and should investigate the data themselves or retain appropriate professionals. Information from sources other than the Listing Agent may have been included in the MLS data. Unless otherwise specified in writing, Broker/Agent has not and will not verify any information obtained from other sources. The Broker/Agent providing the information contained herein may or may not have been the Listing and/or Selling Agent.