

\$2,700,000 - 1101 Hartzell Street, Pacific Palisades

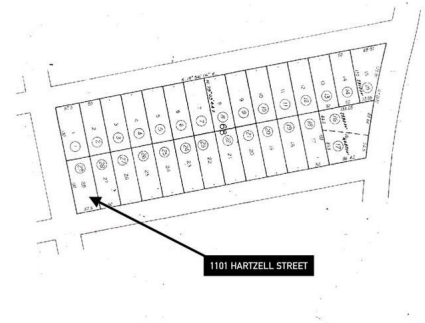
MLS® #25515321

\$2,700,000

0 Bedroom, 0.00 Bathroom,
Land on 0 Acres

N/A, Pacific Palisades,

Exceptional opportunity to acquire an expansive 7,480 sq. ft. corner lot in the highly desirable Alphabet Streets! Located just blocks from the beloved Palisades Village, this generous lot offers the perfect canvas to rebuild the 6,344 sq. ft. home originally constructed in 2015. With a basement and rooftop deck, you can recreate a stunning residence that captured ocean and mountain views. The neighboring lot is also for sale, presenting an excellent opportunity for a larger investment. Be part of the revival of this vibrant community, poised to become highly sought after once again. Don't miss out on this chance to shape your future in this remarkable area!



MLS

Essential Information

MLS® #	25515321
Price	\$2,700,000
Bathrooms	0.00
Acres	0.17
Type	Land
Status	Closed
Listing Agent	Alice Cannington
Listing Office	The Agency

Community Information

Address	1101 Hartzell Street
Area	C15 - Pacific Palisades
Subdivision	N/A

City	Pacific Palisades
County	Los Angeles
Zip Code	90272

Amenities

View	Mountain(s), Ocean
------	--------------------

Additional Information

Date Listed	March 22nd, 2025
Days on Market	3
Zoning	LAR1
Short Sale	N
RE / Bank Owned	N

Based on information from California Regional Multiple Listing Service, Inc. as of February 17th, 2026 at 8:30pm PST. This information is for your personal, non-commercial use and may not be used for any purpose other than to identify prospective properties you may be interested in purchasing. Display of MLS data is usually deemed reliable but is NOT guaranteed accurate by the MLS. Buyers are responsible for verifying the accuracy of all information and should investigate the data themselves or retain appropriate professionals. Information from sources other than the Listing Agent may have been included in the MLS data. Unless otherwise specified in writing, Broker/Agent has not and will not verify any information obtained from other sources. The Broker/Agent providing the information contained herein may or may not have been the Listing and/or Selling Agent.