

\$8,995,000 - 2189 Sheringham Lane, Los Angeles

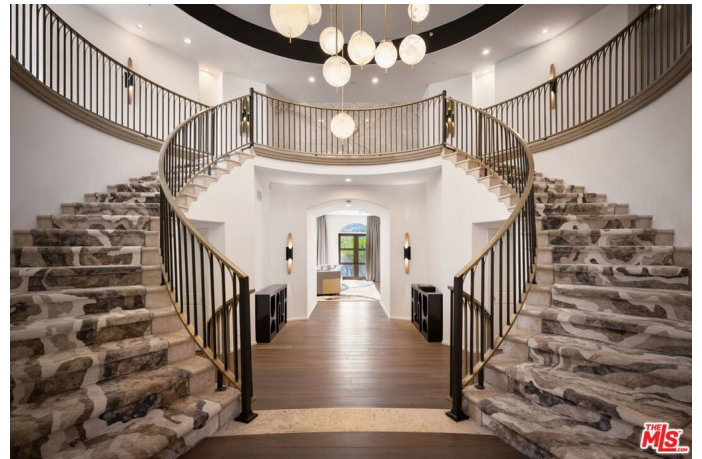
MLS® #25506879

\$8,995,000

8 Bedroom, 9.00 Bathroom, 10,151 sqft
Residential on 0 Acres

N/A, Los Angeles,

Discover unparalleled luxury in this magnificent 10,500 sq ft Mediterranean estate, located in the exclusive 24-hour guard-gated Bel Air Crest community. With 7 bedrooms, 8 baths, and over \$2 million in recent renovations, this home offers the perfect blend of sophistication, comfort, and style. Fully furnished with custom furniture & perched on a 15,471 sq ft lot, this beauty boasts partial hill views and an impressive entry with a royal bifurcated staircase leading to an expansive upper level. The lavish master suite is a true retreat, featuring 3 walk-in closets and dual separate bathrooms, with mountain views from private balconies. The chef's kitchen is a culinary masterpiece, complemented by a circular breakfast area, flowing seamlessly into an outdoor patio with dining spaces & soothing views, ideal for entertaining or unwinding at the end of your day. A spacious family room with a bar, state-of-the-art home theater, a bonus entertainment room easily used for billiard or as a game room, private sauna and so many more luxuries provide the perfect setting for relaxation and fun all in the comfort of your own home. Step outside to your private oasis, complete with a saltwater pool, spa, fire pit, custom outdoor kitchen equipped with BBQ, sink and plenty of counter space, offering the ultimate space for gatherings. Additional amenities include an elevator, 3-car garage & your very own workout gym. Bel Air Crest offers a lifestyle of unparalleled privacy and luxury, with top-tier amenities including



tennis courts, playgrounds, a clubhouse, gym, basketball court, and "pitch and putt."

Exceptional security with full time guard and management ensure peace of mind in this one-of-a-kind estate. Fully furnished and turn-key, this home is the epitome of high-end living, ready to welcome you to your dream life.

Built in 2002

Essential Information

MLS® #	25506879
Price	\$8,995,000
Bedrooms	8
Bathrooms	9.00
Full Baths	9
Square Footage	10,151
Acres	0.44
Year Built	2002
Type	Residential
Sub-Type	Single Family Residence
Style	Mediterranean
Status	Closed
Listing Agent	Shelly Mashiach
Listing Office	MGB Realty Group

Community Information

Address	2189 Sheringham Lane
Area	C04 - Bel Air - Holmby Hills
Subdivision	N/A
City	Los Angeles
County	Los Angeles
Zip Code	90077

Amenities

Amenities	Clubhouse, Tennis Court(s)
Parking	Driveway, Garage, Door-Multi
Garages	Driveway, Garage, Door-Multi

View	Hills, Pool
Has Pool	Yes
Pool	In Ground
Security	Gated with Guard, Security Gate, 24 Hour Security

Interior

Interior	Carpet, Tile, Wood
Interior Features	Walk-In Pantry, Walk-In Closet(s), Dressing Area, Wine Cellar
Appliances	Barbecue, Dishwasher, Disposal, Microwave, Refrigerator, Dryer, Washer
Heating	Central
Cooling	Central Air
Fireplace	Yes
Fireplaces	Family Room, Living Room
# of Stories	2
Stories	Three Or More

Additional Information

Date Listed	March 9th, 2025
Days on Market	16
Zoning	LARE15
Short Sale	N
RE / Bank Owned	N

Based on information from California Regional Multiple Listing Service, Inc. as of April 9th, 2026 at 5:57pm PDT. This information is for your personal, non-commercial use and may not be used for any purpose other than to identify prospective properties you may be interested in purchasing. Display of MLS data is usually deemed reliable but is NOT guaranteed accurate by the MLS. Buyers are responsible for verifying the accuracy of all information and should investigate the data themselves or retain appropriate professionals. Information from sources other than the Listing Agent may have been included in the MLS data. Unless otherwise specified in writing, Broker/Agent has not and will not verify any information obtained from other sources. The Broker/Agent providing the information contained herein may or may not have been the Listing and/or Selling Agent.