

\$999,000 - 10433 Wilshire Boulevard # Ph C, Los Angeles

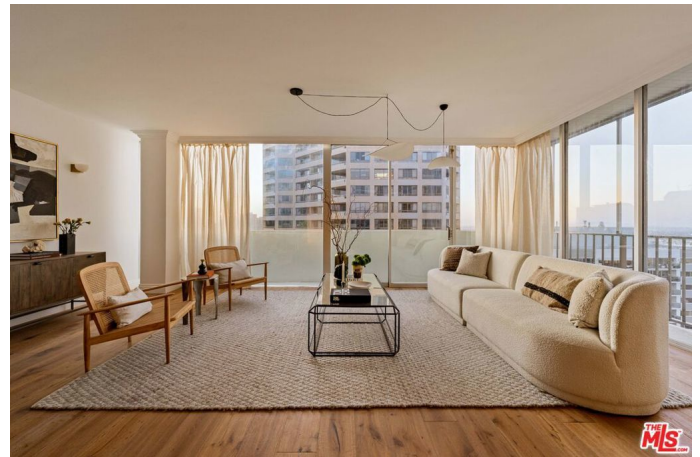
MLS® #25506063

\$999,000

2 Bedroom, 2.00 Bathroom, 1,824 sqft
Residential on 1 Acres

N/A, Los Angeles,

DEADLINE FOR OFFERS: 5PM, TUESDAY MARCH 25. A rare offering on the Wilshire Corridor, this 1,824 sq. ft. corner penthouse is a refined sanctuary designed for those who appreciate impeccable craftsmanship, modern luxury, and effortless convenience. Elevated above the city, this residence is ideal for those who seek a sophisticated LA base - whether a professional valuing proximity to Century City and UCLA or an international buyer looking for privacy and security in a full-service building. Step inside a world of understated elegance, where soft neutrals and organic materials create an atmosphere that is both striking and serene. Travertine tile flooring underfoot, a stone-wrapped fireplace anchoring the living space, and thoughtfully curated lighting add depth and warmth, while seamless hardwood floors enhance the home's sense of cohesion and flow. Designed for versatility, the layout offers two expansive primary suites, each generously proportioned. The main suite features a spacious walk-in closet and a spa-inspired bath, while the second suite, located just off the living area, provides flexibility as a luxurious guest retreat or an elegant home office. The gourmet kitchen is a study in both form and function, featuring a Wolf range, LG Smart fridge, and a striking travertine tile backsplash. A separate laundry room ensures discreet convenience, complementing the home's polished and streamlined aesthetic. Beyond the interiors, the true distinction of this residence lies in its



brehtaking views - an uninterrupted panorama spanning from Downtown LA and the Wilshire Corridor to the Pacific Ocean, offering a dynamic and ever-changing backdrop from sunrise to sunset. Residents enjoy the full-service amenities of a premier building, including valet, concierge, 24-hour security, a private gym, resort-style pool, and social lounge. A penthouse that offers more than just space - it delivers a lifestyle of quiet luxury, effortless convenience, and timeless appeal. HOA dues are \$2,172.56/mth and include building amenities, water, power, cable, internet, sewer and trash.

Built in 1963

Essential Information

MLS® #	25506063
Price	\$999,000
Bedrooms	2
Bathrooms	2.00
Full Baths	2
Square Footage	1,824
Acres	0.72
Year Built	1963
Type	Residential
Sub-Type	Condominium
Style	Contemporary
Status	Closed
Listing Agent	Matthew Hoult
Listing Office	Christie's International Real Estate SoCal

Community Information

Address	10433 Wilshire Boulevard # Ph C
Area	C05 - Westwood - Century City
Subdivision	N/A
City	Los Angeles
County	Los Angeles
Zip Code	90024

Amenities

Amenities	Meeting Room, Pool
Parking	Guest, Valet
Garages	Guest, Valet
View	City Lights, Ocean
Has Pool	Yes
Pool	Association
Security	Gated with Guard, Gated Community, 24 Hour Security

Interior

Interior Features	Walk-In Closet(s), Utility Room
Appliances	Dishwasher, Disposal, Refrigerator, Dryer, Washer
Heating	Central
Cooling	Central Air
Fireplace	Yes
Fireplaces	Gas, Living Room
# of Stories	13
Stories	One

Additional Information

Date Listed	March 13th, 2025
Days on Market	19
Zoning	LAR5
Short Sale	N
RE / Bank Owned	N

Based on information from California Regional Multiple Listing Service, Inc. as of February 3rd, 2026 at 1:51pm PST. This information is for your personal, non-commercial use and may not be used for any purpose other than to identify prospective properties you may be interested in purchasing. Display of MLS data is usually deemed reliable but is NOT guaranteed accurate by the MLS. Buyers are responsible for verifying the accuracy of all information and should investigate the data themselves or retain appropriate professionals. Information from sources other than the Listing Agent may have been included in the MLS data. Unless otherwise specified in writing, Broker/Agent has not and will not verify any information obtained from other sources. The Broker/Agent providing the information contained herein may or may not have been the Listing and/or Selling Agent.